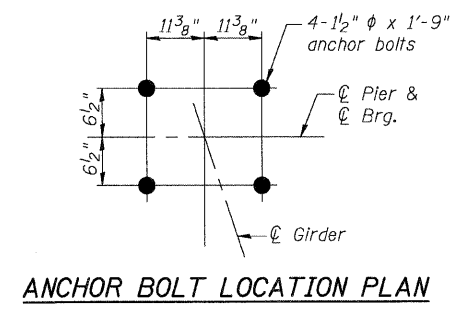
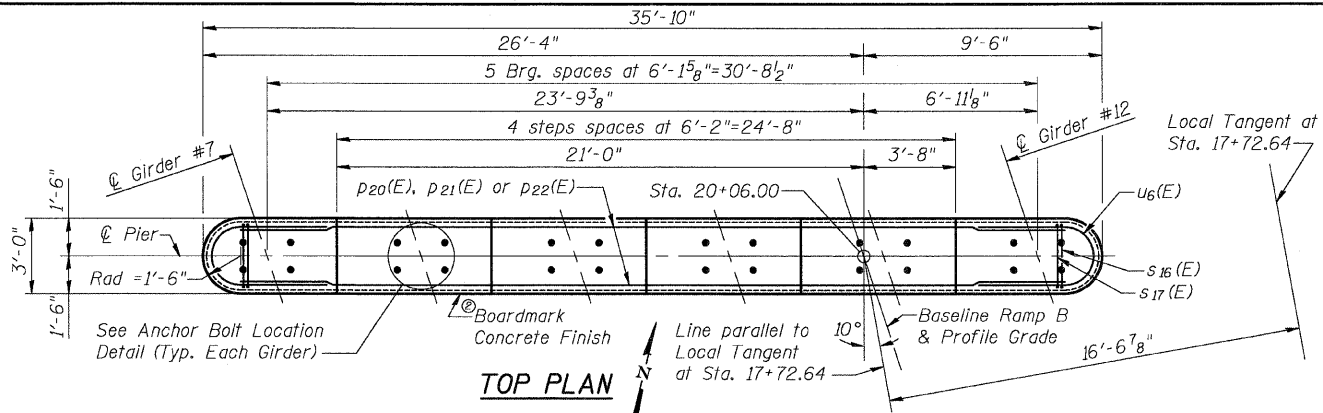


11/10/2008 4:42:06 PM

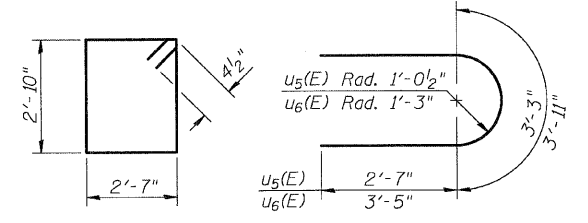
Notes: Space reinforcement in cap to miss anchor bolts.
Four steps monolithically with cap.

PILE DATA

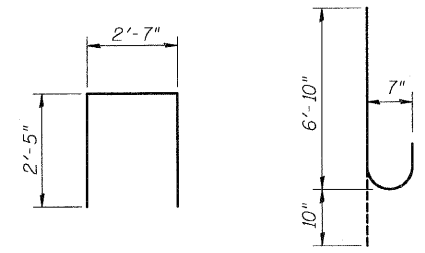
Type & Size: Metal Shell - 14 in. dia x 0.250 in. walls
Nominal Required Bearing: 330 kips
Allowable Resistance Available: 110 kips
Est. Length: 31 ft
No. Req'd: 32 + 1 Test Pile



ROUTE NO.	SECTION	COUNTY	TOTAL SHEETS	SHEET NO.	SHEET NO. 39
F.A.P. 318	*	MADISON	93	61	47 SHEETS
FED. ROAD DIST. NO. 7		ILLINOIS	FED. AID PROJECT-		
* 60-15HB-3		Contract No. 76706			



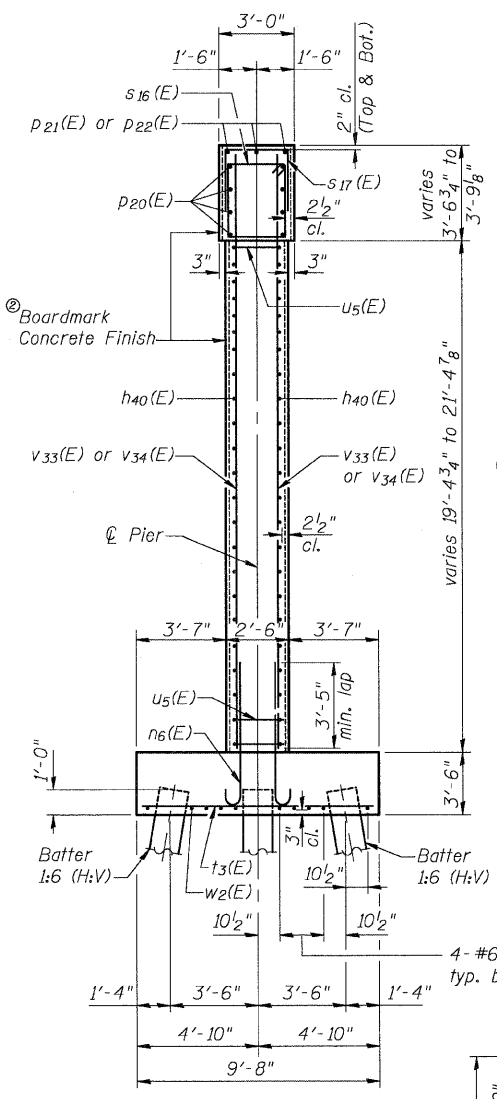
BAR s16(E) BARS u5(E) & u6(E)



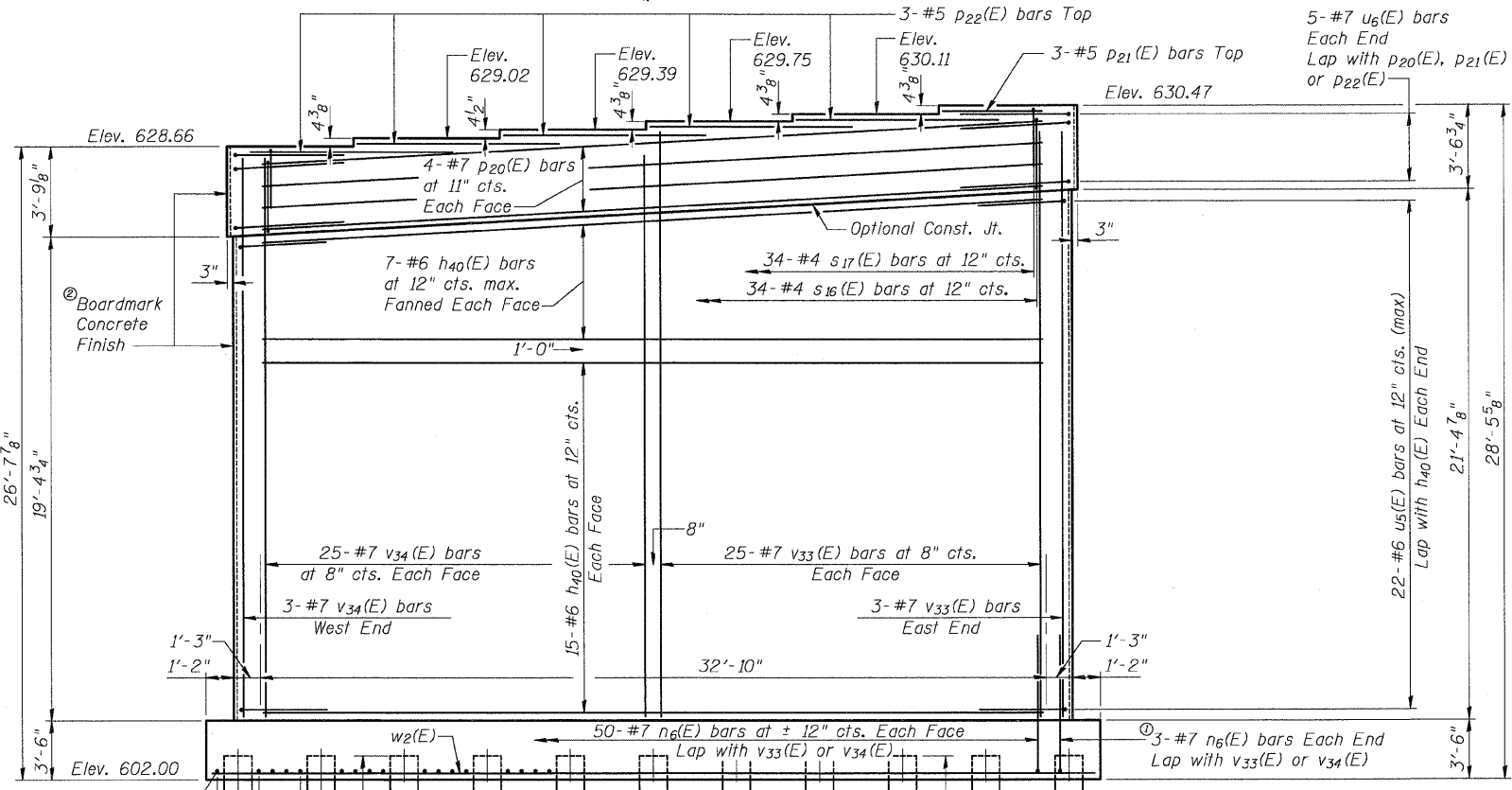
BAR s17(E) BAR n6(E)

BILL OF MATERIAL

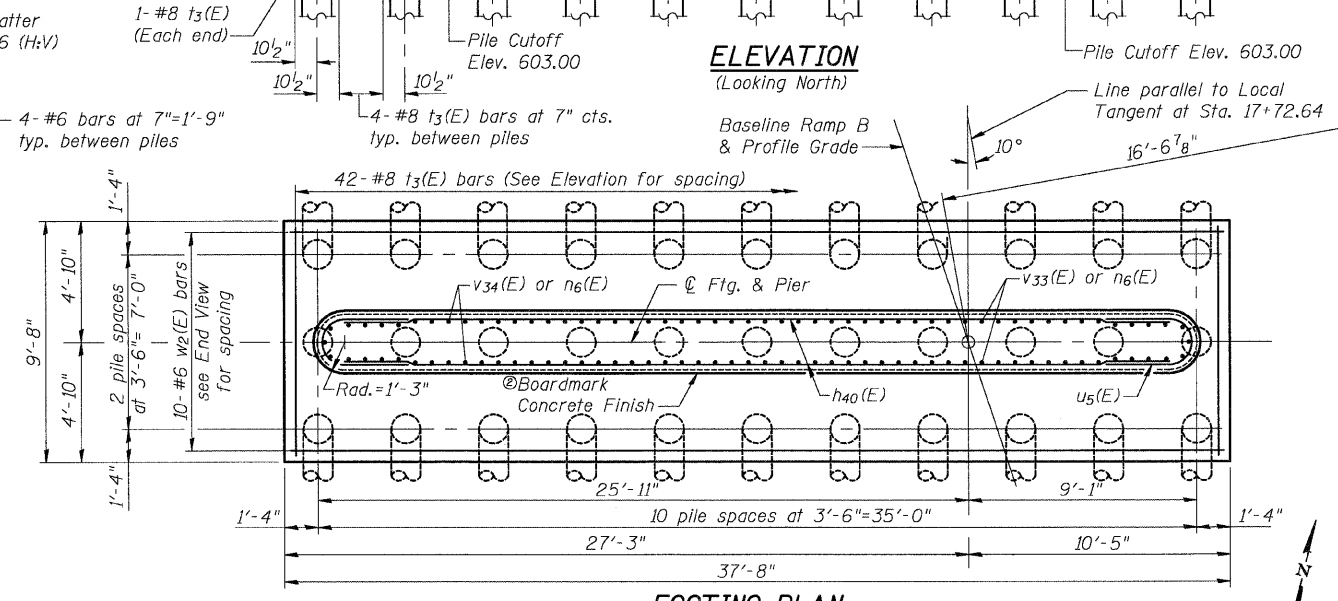
Bar	No.	Size	Length	Shape
h40(E)	44	#6	32'-10"	—
n6(E)	106	#7	7'-8"	U
p20(E)	8	#7	32'-10"	—
p21(E)	3	#5	4'-2"	—
p22(E)	15	#5	8'-6"	—
s16(E)	34	#4	11'-7"	□
s17(E)	34	#4	7'-5"	□
t3(E)	42	#8	9'-2"	—
u5(E)	44	#6	8'-5"	U
u6(E)	10	#7	10'-9"	U
v33(E)	53	#7	23'-8"	—
v34(E)	53	#7	22'-8"	—
w2(E)	10	#6	37'-2"	—
Concrete Structures	CU YD		127.3	
Reinforcement Bars, Epoxy Coated	POUND		12,330	
Structure Excavation	CU YD		124	
Form Liner Textured Surface	SQ FT		1,776	
Furnishing Metal Shell Piles 14"	FOOT		992	
Driving Piles	FOOT		992	
Test Pile Metal Shells	EACH		1	



END VIEW



ELEVATION (Looking North)



FOOTING PLAN

- ① Adjust spacing of n6(E) bars as needed to miss piles
- ② Random width Boardmark Concrete Finish (See Sheet #3 of 47 for details)

PIER #2
RAMP B OVER FAP RTE 310
SECTION 60-15HB-3
MADISON COUNTY
STATION 17+72.64 (RAMP B)
SN 060-0332

DESIGNED	ADL
CHECKED	WLW
DRAWN	BGJ
CHECKED	WLW
PC-1	4-30-99