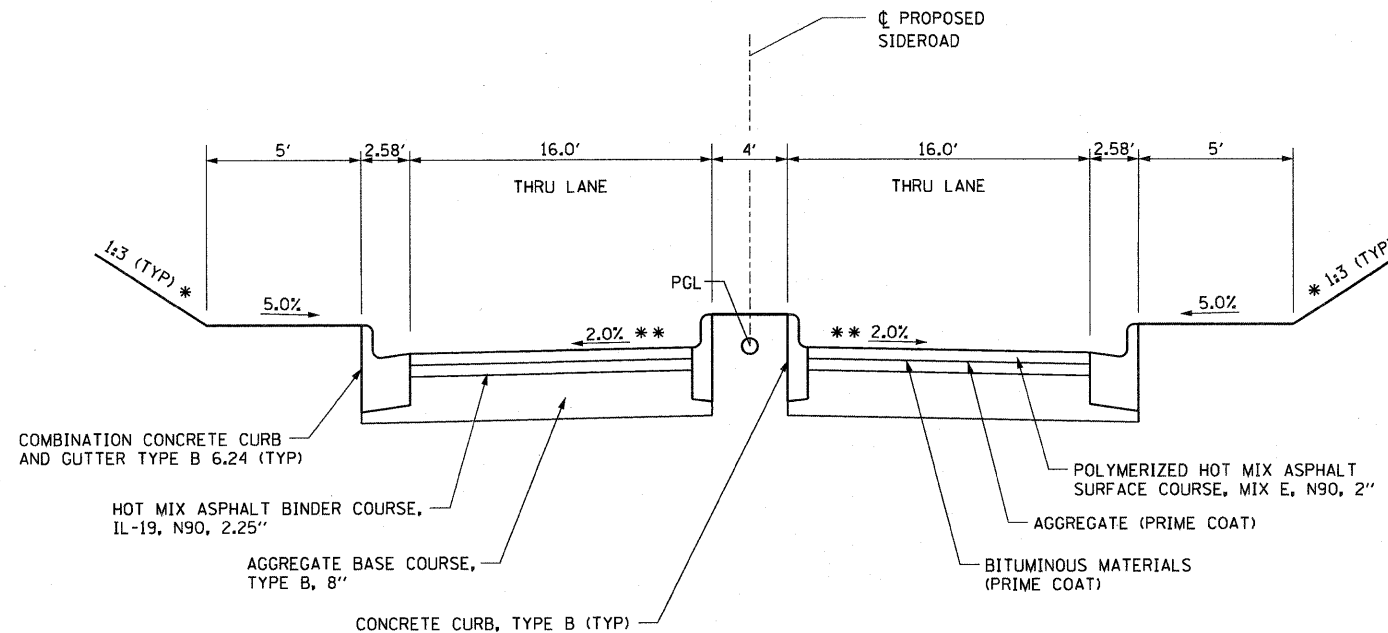


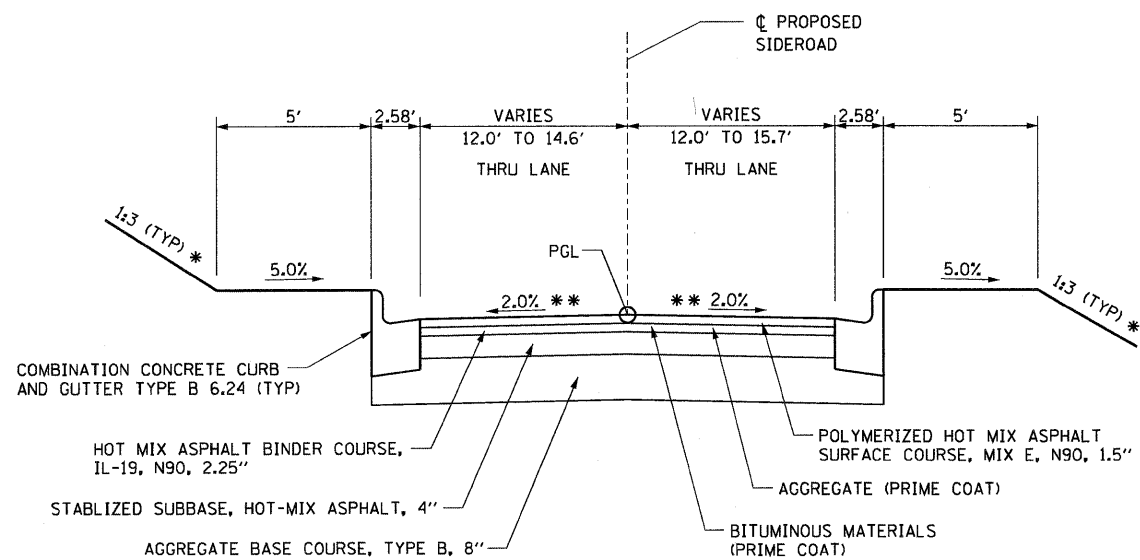
TYPICAL SECTION - SIDEROADS

IDLEWOOD DR STA 0+66.00 TO STA 1+20.00 (VARIES 28' TO 36')
 MCKINLEY AVE. STA 0+13.80 TO STA 0+78.69 (VARIES 17.2' TO 22')
 LOOP ST / S. CHESTNUT ST STA 16+50.00 TO STA 21+90.00 (VARIES 15.7' TO 22')



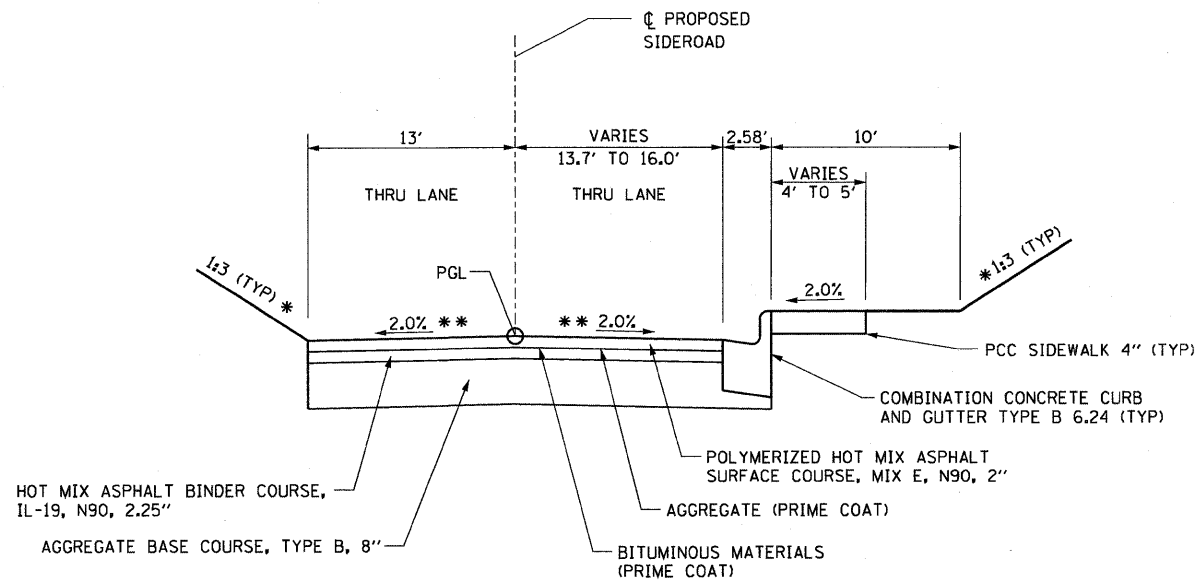
TYPICAL SECTION - SIDEROADS

IDLEWOOD DR STA 0+27.50 TO STA 0+66.00



TYPICAL SECTION - SIDEROADS

SOUTH CLINTON ST STA 7+26.14 TO STA 12+26.66



TYPICAL SECTION - SIDEROADS

HILL ST STA 0+22.00 TO 0+87.00

- * SEE CROSS SECTIONS FOR SLOPE
- ** SEE CROSS SECTIONS FOR REQUIRED INTERSECTION CROSS SLOPE

NOTE:
 USE STRIP REFLECTIVE CRACK CONTROL AT
 EXISTING PAVEMENT JOINTS AS DIRECTED
 BY THE ENGINEER.

FILE NAME =	USER NAME = default	DESIGNED -	REVISED -	STATE OF ILLINOIS DEPARTMENT OF TRANSPORTATION	PROPOSED TYPICAL SECTIONS			F.A.P. RTE.	SECTION	COUNTY	TOTAL SHEETS	SHEET NO.
pr\projects\513581\cadd\dgn\0876830-sh	typical.dgn	DRAWN -	REVISED -					600	60-130,31,128-1	WADSWORTH, CLAIR	399	24
PLLOT SCALE = 50.0000' / IN.	CHECKED -	REVISED -	REVISED -		SCALE: NTS SHEET NO. 10 OF 11 SHEETS STA. N/A TO STA. N/A			CONTRACT NO. 76830				
PLLOT DATE = 8/25/2009	DATE -	REVISED -	REVISED -		FED. ROAD DIST NO.		ILLINOIS FED. AID PROJECT					