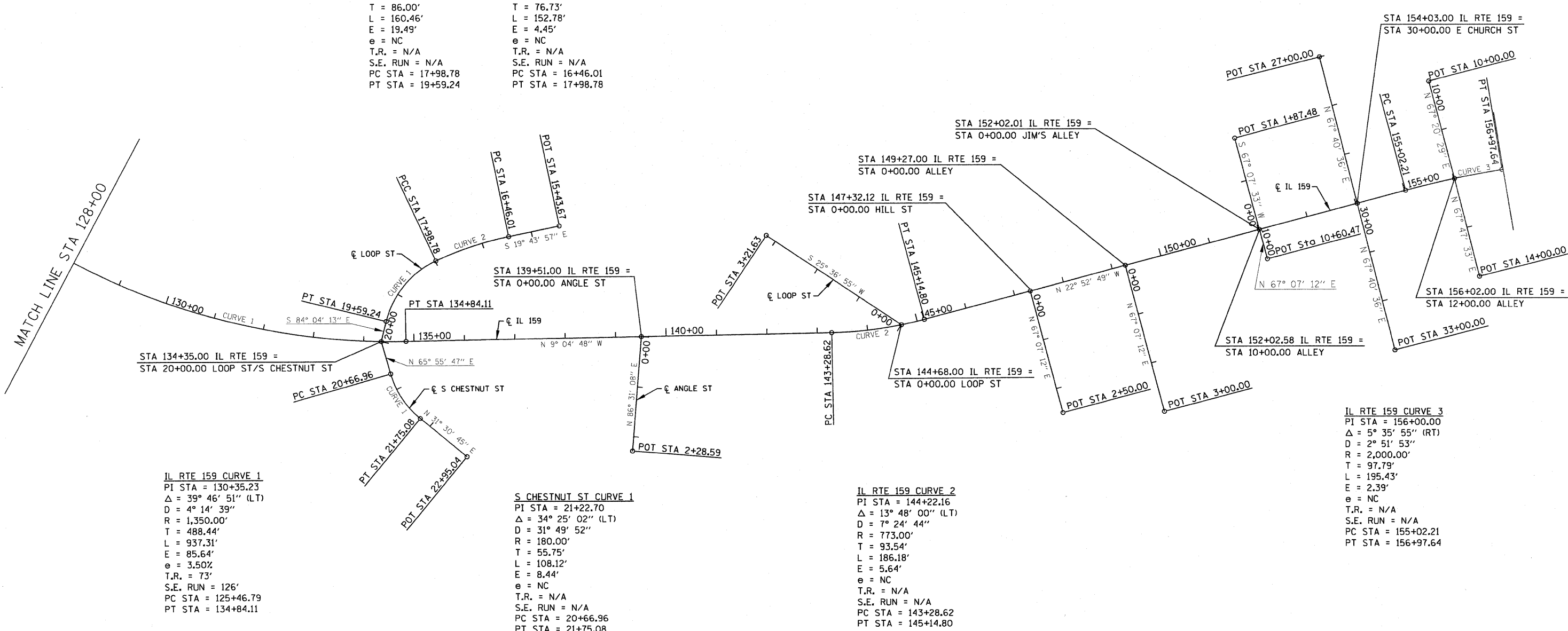




LOOP ST CURVE 1
 PI STA = 18+84.78
 $\Delta = 51^\circ 04' 30''$ (LT)
 D = 31' 49' 52"
 R = 180.00'
 T = 86.00'
 L = 160.46'
 E = 19.49'
 e = NC
 T.R. = N/A
 S.E. RUN = N/A
 PC STA = 17+98.78
 PT STA = 19+59.24

LOOP ST CURVE 2
 PI STA = 17+22.74
 $\Delta = 13^\circ 15' 46''$ (LT)
 D = 8' 40' 52"
 R = 660.00'
 T = 76.73'
 L = 152.78'
 E = 4.45'
 e = NC
 T.R. = N/A
 S.E. RUN = N/A
 PC STA = 16+46.01
 PT STA = 17+98.78

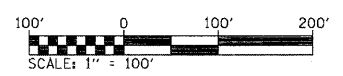


IL RTE 159 CURVE 1
 PI STA = 130+35.23
 $\Delta = 39^\circ 46' 51''$ (LT)
 D = 4' 14' 39"
 R = 1,350.00'
 T = 488.44'
 L = 937.31'
 E = 85.64'
 e = 3.50%
 T.R. = 73'
 S.E. RUN = 126'
 PC STA = 125+46.79
 PT STA = 134+84.11

S CHESTNUT ST CURVE 1
 PI STA = 21+22.70
 $\Delta = 34^\circ 25' 02''$ (LT)
 D = 31' 49' 52"
 R = 180.00'
 T = 55.75'
 L = 108.12'
 E = 8.44'
 e = NC
 T.R. = N/A
 S.E. RUN = N/A
 PC STA = 20+66.96
 PT STA = 21+75.08

IL RTE 159 CURVE 2
 PI STA = 144+22.16
 $\Delta = 13^\circ 48' 00''$ (LT)
 D = 7' 24' 44"
 R = 773.00'
 T = 93.54'
 L = 186.18'
 E = 5.64'
 e = NC
 T.R. = N/A
 S.E. RUN = N/A
 PC STA = 143+28.62
 PT STA = 145+14.80

IL RTE 159 CURVE 3
 PI STA = 156+00.00
 $\Delta = 5^\circ 35' 55''$ (RT)
 D = 2' 51' 53"
 R = 2,000.00'
 T = 97.79'
 L = 195.43'
 E = 2.39'
 e = NC
 T.R. = N/A
 S.E. RUN = N/A
 PC STA = 155+02.21
 PT STA = 156+97.64



FILE NAME =	USER NAME = #USER#	DESIGNED -	REVISED -	STATE OF ILLINOIS DEPARTMENT OF TRANSPORTATION	PROPOSED ALIGNMENT			F.A.P. RTE	SECTION	COUNTY	TOTAL SHEETS	SHEET NO.
#FILE#		DRAWN -	REVISED -					600	60-(30,31,128)-1	MADISON/ST. CLAIR	399	54
		CHECKED -	REVISED -		CONTRACT NO. 76830							
		DATE -	REVISED -		FED. ROAD DIST NO. ILLINOIS FED. AID PROJECT							