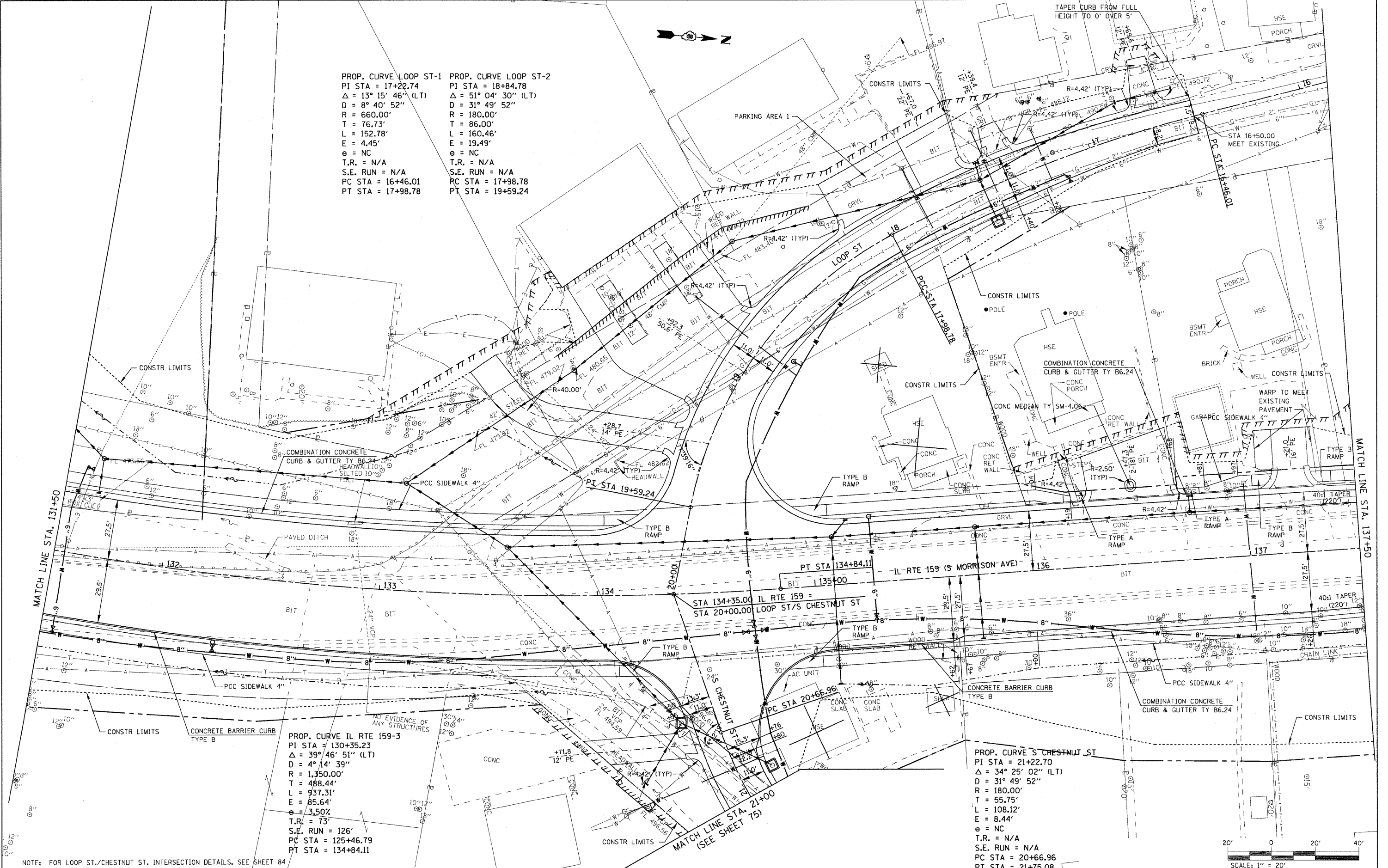


PROP. CURVE LOOP ST-1
 PI STA = 17+22.74
 $\Delta = 13^\circ 15' 46''$ (LT)
 $D = 8^\circ 40' 52''$
 $R = 660.00'$
 $T = 76.73'$
 $L = 152.78'$
 $E = 4.45'$
 $e = NC$
 $T.R. = N/A$
 $S.E. RUN = N/A$
 $PC STA = 16+46.01$
 $PT STA = 17+98.78$

PROP. CURVE LOOP ST-2
 PI STA = 18+84.78
 $\Delta = 51^\circ 04' 30''$ (LT)
 $D = 31^\circ 49' 52''$
 $R = 180.00'$
 $T = 86.00'$
 $L = 160.46'$
 $E = 19.49'$
 $e = NC$
 $T.R. = N/A$
 $S.E. RUN = N/A$
 $PC STA = 17+98.78$
 $PT STA = 19+59.24$

PROP. CURVE IL RTE 159-3
 PI STA = 130+35.23
 $\Delta = 39^\circ 46' 51''$ (LT)
 $D = 4^\circ 14' 39''$
 $R = 1,350.00'$
 $T = 488.44'$
 $L = 937.31'$
 $E = 85.64'$
 $e = 3.50\%$
 $T.R. = 73'$
 $S.E. RUN = 126'$
 $PC STA = 125+46.79$
 $PT STA = 134+84.11$

PROP. CURVE S CHESTNUT ST
 PI STA = 21+22.70
 $\Delta = 34^\circ 25' 02''$ (LT)
 $D = 31^\circ 49' 52''$
 $R = 180.00'$
 $T = 55.75'$
 $L = 108.12'$
 $E = 8.44'$
 $e = NC$
 $T.R. = N/A$
 $S.E. RUN = N/A$
 $PC STA = 20+66.96$
 $PT STA = 21+75.08$



NOTE: FOR LOOP ST./CHESTNUT ST. INTERSECTION DETAILS, SEE SHEET 84

FILE NAME =	USER NAME = #USER#	DESIGNED -	REVISED -	STATE OF ILLINOIS DEPARTMENT OF TRANSPORTATION	PLAN IL ROUTE 159	F.A.P. RTE.	SECTION	COUNTY	TOTAL SHEETS	SHEET NO.	
#FILE#		DRAWN -	REVISED -			600	60-(30,31,128)-1	MADISON/ST. CLAIR	399	63	
		CHECKED -	REVISED -			CONTRACT NO. 76830					
		DATE -	REVISED -			FED. ROAD DIST. NO.	ILLINOIS FED. AID PROJECT				