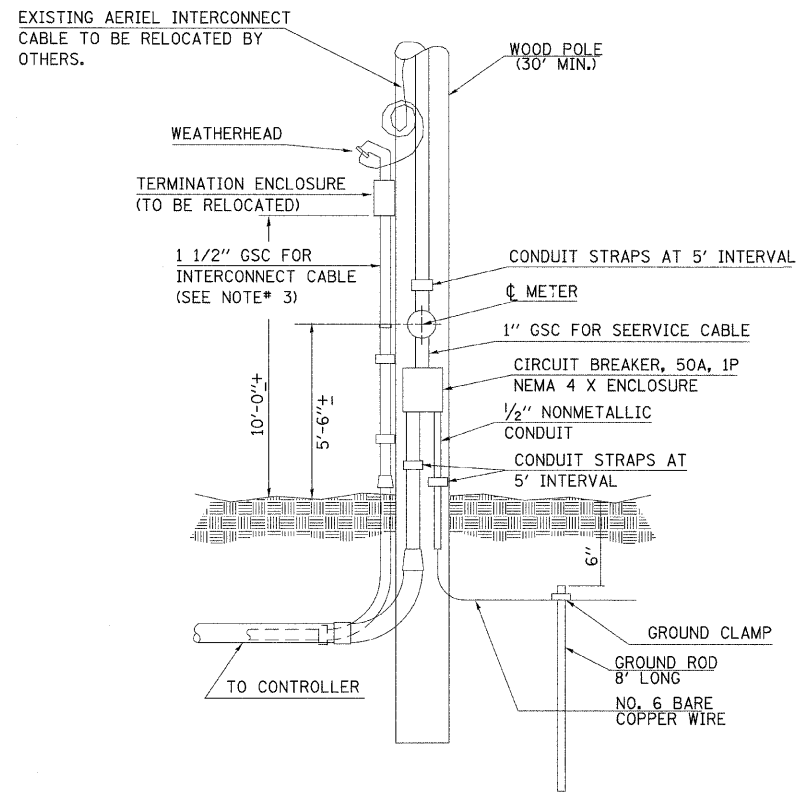


**SERVICE INSTALLATION TYPE A
& CONTROLLER CABINET**
NOT TO SCALE

IL 159, MID-BLOCK CROSSING



**SERVICE INSTALLATION
TYPE A**

NOT TO SCALE

IL 159 AT E. CHURCH ST.

NOTES:

1. VERTICAL CONDUIT SECTION ATTACHED TO THE SERVICE POLE AND RELOCATION OF TERMINATION ENCLOSURE BOX SHALL BE INCIDENTAL TO THE SERVICE INSTALLATION.
2. THE CONTRACTOR SHALL REMOVE TERMINATION ENCLOSURE AND INTERCONNECT CABLE FROM EXISTING FACILITIES, STORE IT, AND RELOCATE ON PROPOSED FACILITIES.
3. THE CONTRACTOR SHALL FURNISH AND INSTALL ATTACHMENT FOR UTILITY COMPANY'S SERVICE POLE TO THE SATISFACTION OF THE RESPECTIVE UTILITY COMPANY.

FILE NAME =	USER NAME = patelbm	DESIGNED -	REVISED -	STATE OF ILLINOIS DEPARTMENT OF TRANSPORTATION	TRAFFIC SIGNALS DETAILS			F.A.P. RTE.	SECTION	COUNTY	TOTAL SHEETS	SHEET NO.
et\pw_work\pwidot\pate\lbn\dss79810\087832-sha-ts.dgn		DRAWN -	REVISED -		600	60-(30,31,128)-1	MADISON	399	181			
PLOT SCALE = 20,0000' / IN.		CHECKED -	REVISED -		SCALE: SHEET NO. OF SHEETS STA. TO STA.			CONTRACT NO. 76830				
PLOT DATE = 9/28/2009		DATE -	REVISED -		ILLINOIS FED. AID PROJECT							