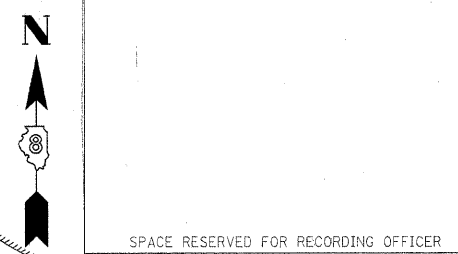
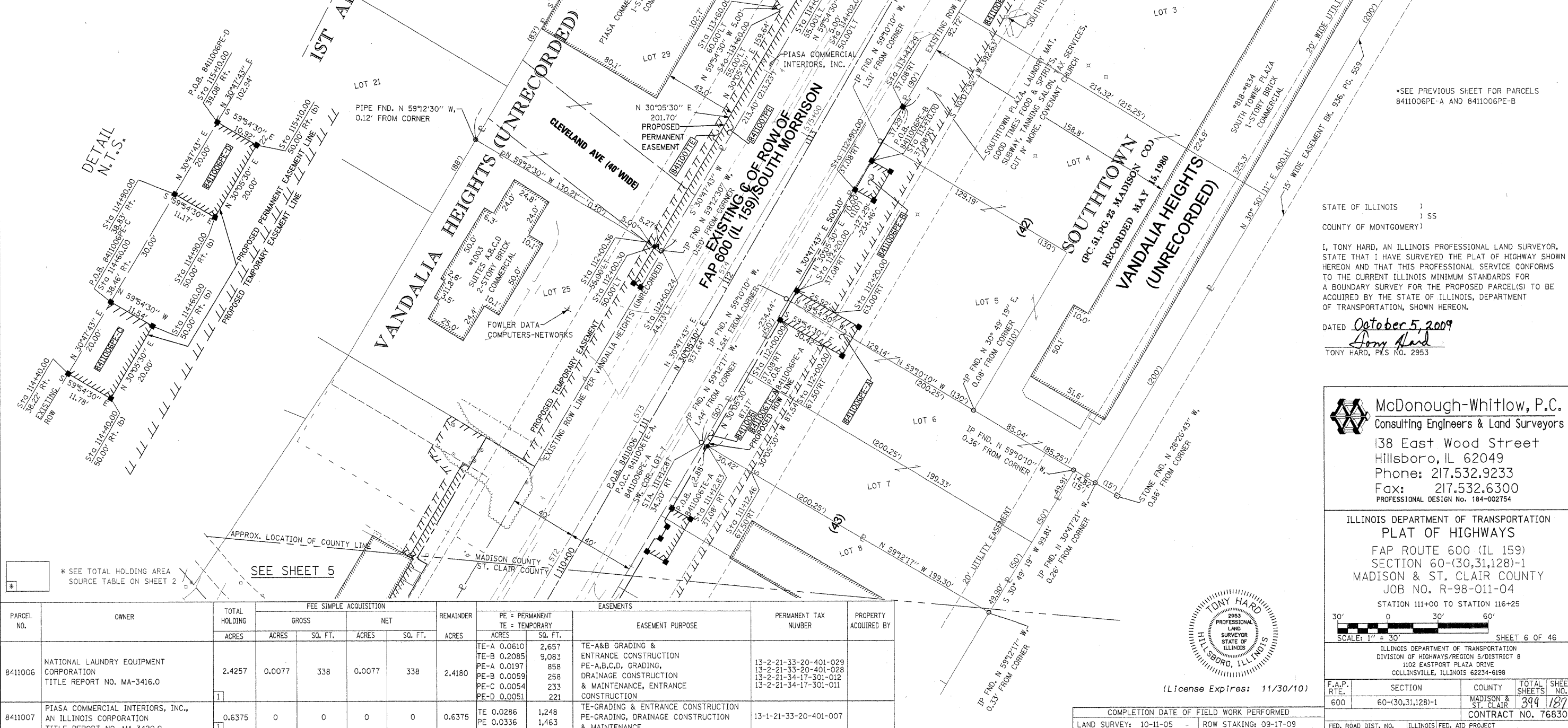


PART OF U.S. SURVEY 393 CLAIM 609 IN T.3N., R.8W., OF THE 3RD PM, MADISON COUNTY, ILLINOIS

SEE BASIS OF COORDINATES AND BEARINGS STATEMENT ON SHEET 2

COORDINATE TABLE				
STATION	OFFSET	NORTH	EAST	
111+12.83	37.08' RT	725,363.2236	348,492.9217	
112+00.00	80.00' RT	725,417.1242	348,573.7619	
112+20.00	80.00' RT	725,434.4287	348,583.7896	
116+13.36	40.10' RT	725,794.2839	348,746.4849	
115+10.00	39.08' RT	725,705.8615	348,693.7845	
115+10.00	50.00' RT	725,700.3855	348,703.2342	
114+90.00	50.00' RT	725,683.0810	348,693.2065	
114+90.00	38.83' RT	725,688.6801	348,683.5443	
114+60.00	38.46' RT	725,662.9081	348,668.1840	
114+60.00	50.00' RT	725,657.1242	348,678.1650	
114+40.00	50.00' RT	725,639.8198	348,668.1373	
114+40.00	38.22' RT	725,645.7268	348,657.9438	
113+47.29	37.08' RT	725,566.0806	348,610.4741	
113+10.00	37.08' RT	725,533.8184	348,591.7787	
113+10.00	50.00' RT	725,527.3405	348,602.9574	
112+90.00	50.00' RT	725,510.0360	348,592.9297	
112+90.00	37.08' RT	725,516.5139	348,581.7510	
112+20.00	37.08' RT	725,455.9481	348,546.6541	
112+00.00	37.08' RT	725,438.6436	348,536.6264	
112+00.30	50.00' LT	725,482.5658	348,461.4343	
114+13.78	55.00' LT	725,669.7779	348,564.1418	
114+02.00	55.00' LT	725,659.5865	348,558.2361	
114+02.00	50.00' LT	725,657.0796	348,562.5622	
106+52.89	PI	724,983.8610	348,230.2313	
115+90.53	PI	725,795.1323	348,700.3499	

SEE SHEET 46 FOR CONTROL POINTS WITH CROSSIES  
 (a) - SET DRILL HOLE WITH MAG NAIL  
 (b) - SET MAG NAIL OR LANDSCAPE NAIL



\*SEE PREVIOUS SHEET FOR PARCELS 8411006PE-A AND 8411006PE-B

STATE OF ILLINOIS )  
 ) SS  
 COUNTY OF MONTGOMERY )  
 I, TONY HARD, AN ILLINOIS PROFESSIONAL LAND SURVEYOR,  
 STATE THAT I HAVE SURVEYED THE PLAT OF HIGHWAY SHOWN  
 HEREON AND THAT THIS PROFESSIONAL SERVICE CONFORMS  
 TO THE CURRENT ILLINOIS MINIMUM STANDARDS FOR  
 A BOUNDARY SURVEY FOR THE PROPOSED PARCEL(S) TO BE  
 ACQUIRED BY THE STATE OF ILLINOIS, DEPARTMENT  
 OF TRANSPORTATION, SHOWN HEREON.  
 DATED October 5, 2009  
*Tony Hard*  
 TONY HARD, P.L.S. NO. 2953

**McDonough-Whitlow, P.C.**  
 Consulting Engineers & Land Surveyors  
 138 East Wood Street  
 Hillsboro, IL 62049  
 Phone: 217.532.9233  
 Fax: 217.532.6300  
 PROFESSIONAL DESIGN NO. 184-002754

ILLINOIS DEPARTMENT OF TRANSPORTATION  
**PLAT OF HIGHWAYS**  
 FAP ROUTE 600 (IL 159)  
 SECTION 60-(30,31,128)-1  
 MADISON & ST. CLAIR COUNTY  
 JOB NO. R-98-011-04  
 STATION 111+00 TO STATION 116+25

SCALE: 1" = 30'

ILLINOIS DEPARTMENT OF TRANSPORTATION  
 DIVISION OF HIGHWAYS/REGION 5/DISTRICT 8  
 1102 EASTPORT PLAZA DRIVE  
 COLLINGSVILLE, ILLINOIS 62234-6198

F.A.P. RTE.	SECTION	COUNTY	TOTAL SHEETS	SHEET NO.
600	60-(30,31,128)-1	MADISON & ST. CLAIR	399	187

COMPLETION DATE OF FIELD WORK PERFORMED  
 LAND SURVEY: 10-11-05      ROW STAKING: 09-17-09

FED. ROAD DIST. NO.    ILLINOIS FED. AID PROJECT

\* SEE TOTAL HOLDING AREA SOURCE TABLE ON SHEET 2

PARCEL NO.	OWNER	TOTAL HOLDING ACRES	FEE SIMPLE ACQUISITION				REMAINDER ACRES	EASEMENTS		PERMANENT TAX NUMBER	PROPERTY ACQUIRED BY	
			GROSS ACRES	SQ. FT.	NET ACRES	SQ. FT.		PE = PERMANENT ACRES	SQ. FT.			
												TE = TEMPORARY
8411006	NATIONAL LAUNDRY EQUIPMENT CORPORATION TITLE REPORT NO. MA-3416.0	2.4257	0.0077	338	0.0077	338	2.4180	TE-A 0.0610 TE-B 0.2085 PE-A 0.0197 PE-B 0.0059 PE-C 0.0054 PE-D 0.0051	2,657 9,083 858 258 233 221	TE-A&B GRADING & ENTRANCE CONSTRUCTION PE-A,B,C,D, GRADING, DRAINAGE CONSTRUCTION & MAINTENANCE, ENTRANCE CONSTRUCTION	13-2-21-33-20-401-029 13-2-21-33-20-401-028 13-2-21-34-17-301-012 13-2-21-34-17-301-011	
8411007	PIASA COMMERCIAL INTERIORS, INC., AN ILLINOIS CORPORATION TITLE REPORT NO. MA-3420.0	0.6375	0	0	0	0	0.6375	TE 0.0286 PE 0.0336	1,248 1,463	TE-GRADING & ENTRANCE CONSTRUCTION PE-GRADING, DRAINAGE CONSTRUCTION & MAINTENANCE	13-1-21-33-20-401-007	

