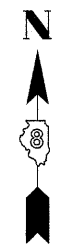


PART OF U.S. SURVEY 393, CLAIM 609 AND PART OF THE SW 1/4 OF SECTION 34, T3N, R8W, OF THE 3RD PM, MADISON COUNTY, ILLINOIS

SEE SHEET 13

CURVE TABLE									
CURVE	PI STA.	Δ	TANGENT	LENGTH	RADIUS	CHORD	CHORD BEARING	PC STA.	PT STA.
8411024A				28.96' (25.28')	1,045.20'	28.96'	S 30°00'05" W		
8411024PR				24.17'	25.00'	23.24'	S 03°05'57" W		
8411024TE-B				65.16'	1,045.20'	65.15'	N 12°34'49" E		
8411024TE-B1				270.74'	1,045.20'	269.98'	N 21°47'13" E		
SCLREV-1	7+61.16	15°04'25" (RT)	33.74'	67.09'	255.00'	66.89'	S 43°51'03" E	7+27.42	7+94.51
SCLREV-2	8+27.17	14°36'02" (LT)	32.67'	64.98'	255.00'	64.81'	S 43°36'52" E	7+94.51	8+59.49
SCLREV-3	10+87.24	21°59'37" (RT)	49.55'	97.88'	255.00'	97.28'	S 39°55'05" E	10+37.69	11+35.57
159ULT-3	130+35.23	39°46'51" (LT)	488.44'	937.31'	1,350.00'	918.60'	N 10°48'37" E	125+46.79	134+84.11
C2	592+27.61	39°51'56" (LT) (39°52')	364.53'	699.40' (699.4')	1,005.20' (1,005.2')	685.38'	N 10°51'45" E	588+63.08 (588+63.1)	595+62.48

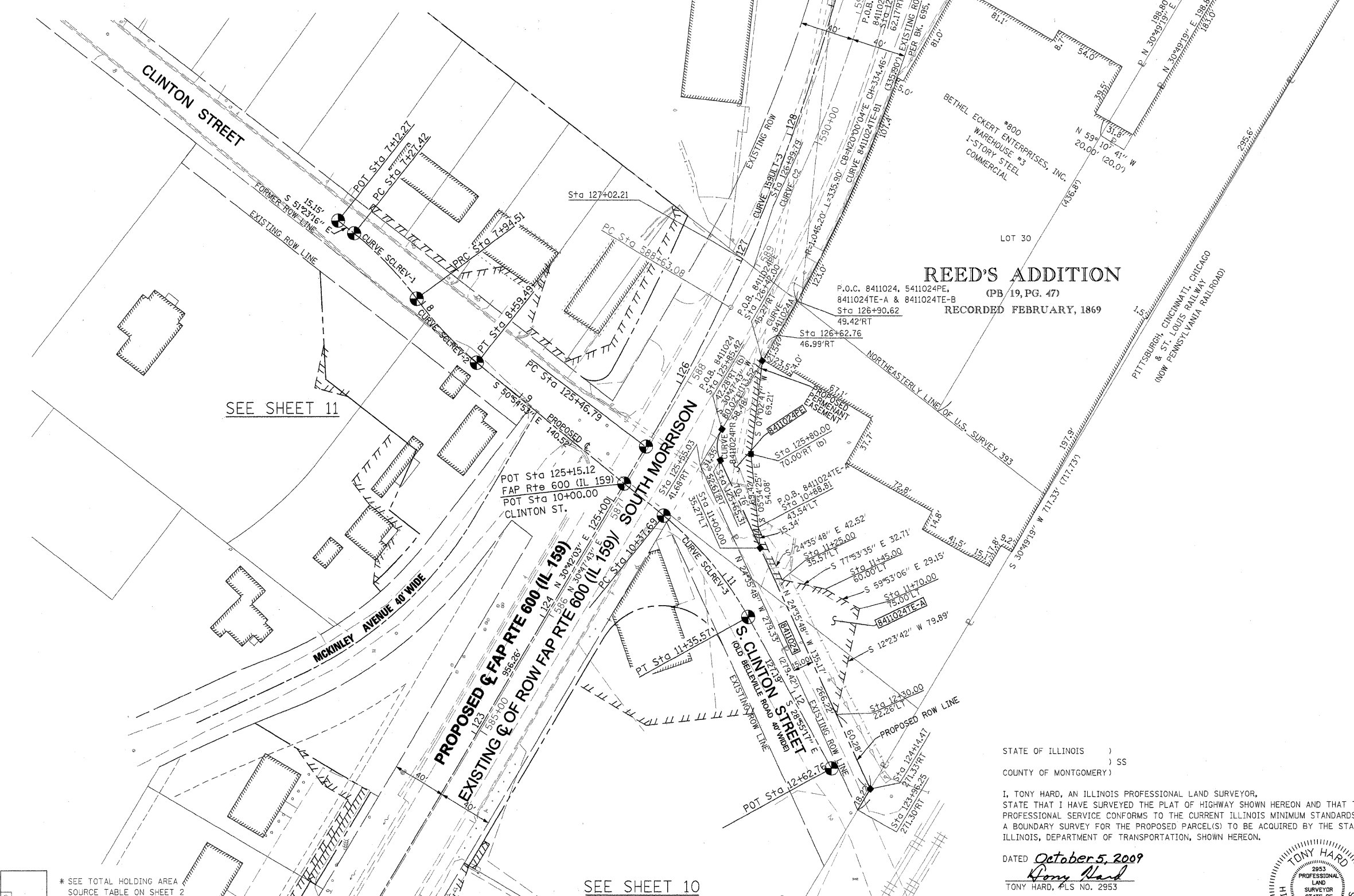


SPACE RESERVED FOR RECORDING OFFICER

SEE BASIS OF COORDINATES AND BEARINGS STATEMENT ON SHEET 2

COORDINATE TABLE			
STATION	OFFSET	NORTH	EAST
123+96.25	271.30' RT	726,349.4177	349,344.9880
125+55.03	41.68' RT	726,603.4000	349,228.7237
124+14.47	271.33' RT	726,365.0634	349,354.3229
125+85.42	42.28' RT	726,630.3278	349,244.7728
125+65.31	52.61' RT	726,607.1228	349,243.5164
115+90.53	PI	725,795.1323	348,700.3499
125+46.79	PC	726,617.3704	349,188.5743
11+00.00	35.27' LT	726,542.7865	349,272.9673
126+42.00	45.27' RT	726,680.5652	349,274.7147
10+37.69	PC	726,566.3769	349,201.6566
11+35.57	PT	726,491.7634	349,264.0831
12+62.76	POT	726,380.4380	349,325.5920
10+00.00	POT	726,590.1374	349,172.4040
125+80.00	70.00' RT	726,611.8804	349,266.2249
127+02.21	C	726,755.2715	349,260.0638
130+12.28	62.53' RT	727,038.4283	349,414.6178

SEE SHEET 46 FOR CONTROL POINTS WITH CROSSTIES
 (a) - SET DRILL HOLE WITH MAG NAIL
 (b) - SET MAG NAIL OR LANDSCAPE NAIL



REED'S ADDITION
 P.O.C. 8411024, 5411024PE, 8411024TE-A & 8411024TE-B (PB 19, PG. 47)
 Sta 126+90.62
 RECORDED FEBRUARY, 1869

SEE SHEET 11

SEE SHEET 10

STATE OF ILLINOIS)
 COUNTY OF MONTGOMERY)

I, TONY HARD, AN ILLINOIS PROFESSIONAL LAND SURVEYOR, STATE THAT I HAVE SURVEYED THE PLAT OF HIGHWAY SHOWN HEREON AND THAT THIS PROFESSIONAL SERVICE CONFORMS TO THE CURRENT ILLINOIS MINIMUM STANDARDS FOR A BOUNDARY SURVEY FOR THE PROPOSED PARCEL(S) TO BE ACQUIRED BY THE STATE OF ILLINOIS, DEPARTMENT OF TRANSPORTATION, SHOWN HEREON.

DATED October 5, 2009
Tony Hard
 TONY HARD, PLS NO. 2953



* SEE TOTAL HOLDING AREA SOURCE TABLE ON SHEET 2

PARCEL NO.	OWNER	TOTAL HOLDING ACRES	GROSS			NET			REMAINDER		EASEMENTS		PERMANENT TAX NUMBER	PROPERTY ACQUIRED BY
			ACRES	SO. FT.	ACRES	SO. FT.	ACRES	SO. FT.	ACRES	SO. FT.	PE = PERMANENT	TE = TEMPORARY		
8411024	JAMES ECKERT, AS TO AN UNDIVIDED 1/2 INTEREST; AND LARRY ECKERT, TRUSTEE OF THE DEBORAH ECKERT REVOCABLE TRUST DATED MAY 15, 2001, AS TO AN UNDIVIDED 1/2 INTEREST TITLE REPORT NO. MA-3431.0	3.3800	0.0968	4,216	0.0968	4,216	3.2832	PE 0.0441 TE-A 0.0690 TE-B 0.0098	1,921 3,007 426	TE-A & TE-B - GRADING & ENTRANCE CONSTRUCTION PE - GRADING, DRAINAGE CONSTRUCTION AND MAINTENANCE		13-2-21-34-13-302-001		

McDonough-Whitlow, P.C.
 Consulting Engineers & Land Surveyors
 138 East Wood Street
 Hillsboro, IL 62049
 Phone: 217.532.9233
 Fax: 217.532.6300
 PROFESSIONAL DESIGN NO. 184-002754

ILLINOIS DEPARTMENT OF TRANSPORTATION
PLAT OF HIGHWAYS
 FAP ROUTE 600 (IL 159)
 SECTION 60-(30,31,128)-1
 MADISON COUNTY
 JOB NO. R-98-011-04
 STATION 123+75 TO STATION 130+25

SCALE: 1" = 40'

SHEET 12 OF 46

ILLINOIS DEPARTMENT OF TRANSPORTATION
 DIVISION OF HIGHWAYS/REGION 5/DISTRICT 8
 1102 EASTPORT PLAZA DRIVE
 COLLINSVILLE, ILLINOIS 62234-6198

F.A.P. RTE.	SECTION	COUNTY	TOTAL SHEET NO.
600	60-(30,31,128)-1	MADISON	399 / 193

COMPLETION DATE OF FIELD WORK PERFORMED
 LAND SURVEY: 10-11-05 ROW STAKING: 09-17-09
 CONTRACT NO. 76830
 FED. ROAD DIST. NO. ILLINOIS FED. AID PROJECT