

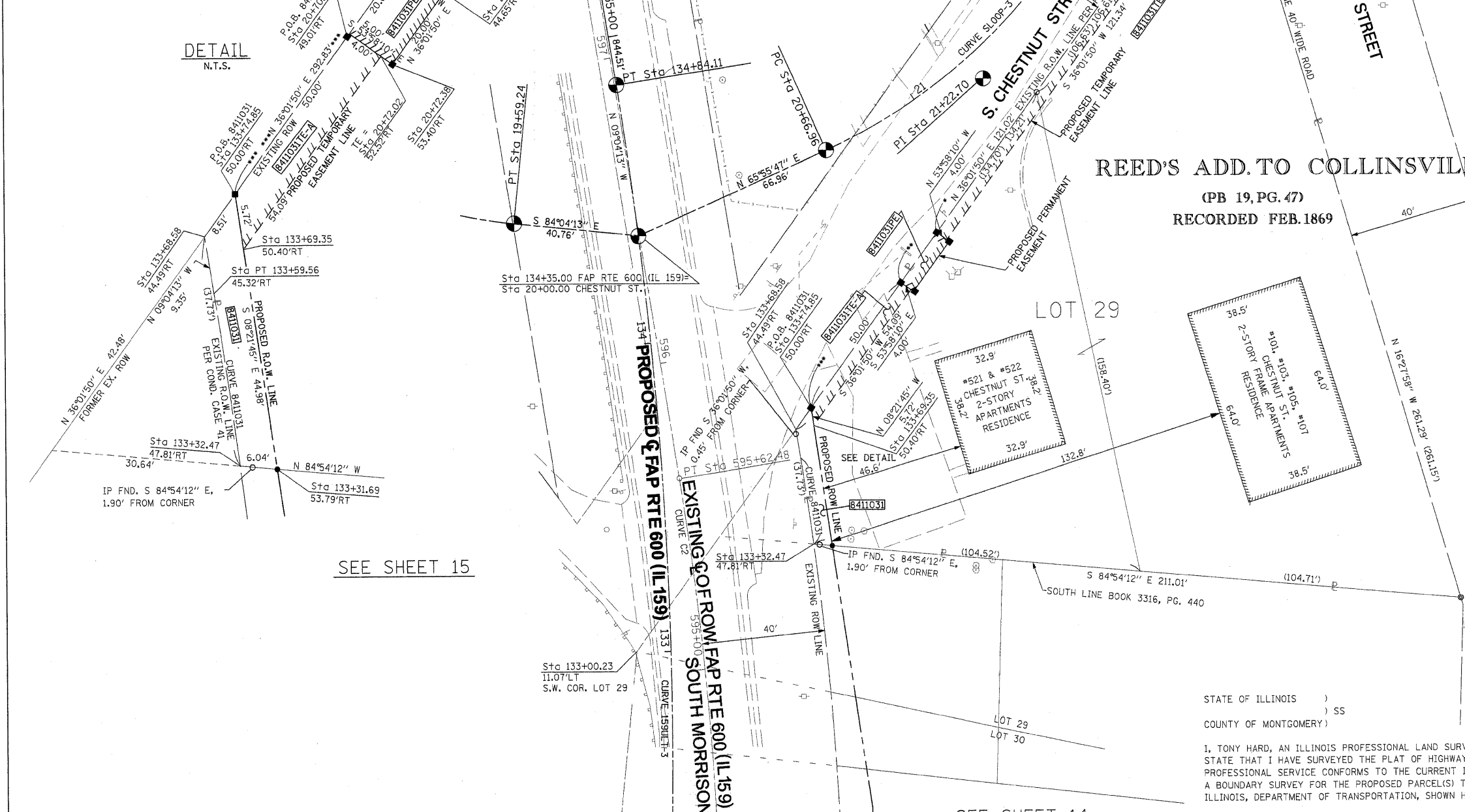
PART OF THE SW 1/4 OF SECTION 34, T3N, R8W, OF THE 3RD PM, MADISON COUNTY, ILLINOIS

SEE BASIS OF COORDINATES AND BEARINGS STATEMENT ON SHEET 2

COORDINATE TABLE				
STATION	OFFSET	NORTH	EAST	
20+00.00	PI	727,471.0464	349,367.7322	
20+66.96	PC	727,498.3563	349,428.8690	
20+70.53		727,455.5071	349,452.9868	
20+72.38	53.40' RT	727,452.5660	349,457.0303	
20+84.88	40.08' RT	727,471.6812	349,464.7511	
20+86.52	44.65' RT	727,468.7401	349,468.7946	
21+75.08	PT	727,568.6211	349,508.9092	
22+95.04	POT	727,670.8857	349,571.6078	
125+46.79	PC	726,617.3704	349,188.5743	
133+31.69	53.79' RT	727,370.5736	349,430.1173	
133+32.47	47.81' RT	727,371.1100	349,424.1035	
133+68.58	44.49' RT	727,408.1865	349,418.5679	
133+74.85	50.00' RT	727,415.0718	349,423.5760	
134+84.11	PT	727,519.6675	349,360.8661	
143+28.62	PC	728,353.5933	349,227.5911	
21+22.70	PI	727,521.0939	349,479.7702	
133+59.56	45.32' RT	727,398.9515	349,420.0422	
22+31.16	25.81' RT	727,602.9390	349,560.2220	

CURVE TABLE										
CURVE	PI STA.	Δ	TANGENT	LENGTH	RADIUS	CHORD	CHORD BEARING	PC STA.	PT STA.	
B411031			28.14'	28.14'	1,045.20'	28.14'	N 08°17'57" W			
S LOOP-3	21+22.70	34°25'02" (LT)	55.75'	108.12'	180.00'	106.51'	N 48°43'16" E	20+66.96	21+75.08	
159UL-T-3	130+35.23	39°46'51" (LT)	488.44'	937.31'	1,350.00'	918.60'	N 10°48'37" E	125+46.79	134+84.11	
C2	592+27.61	39°51'56" (LT)	364.53'	699.40'	1,005.20'	685.38'	N 10°51'45" E	588+63.08	595+62.48	

SEE SHEET 46 FOR CONTROL POINTS WITH CROSSIES
 (a) - SET DRILL HOLE WITH MAG NAIL
 (b) - SET MAG NAIL OR LANDSCAPE NAIL



DETAIL
N.T.S.

SEE SHEET 15

SEE SHEET 17

SEE SHEET 14



SPACE RESERVED FOR RECORDING OFFICER

* SEE TOTAL HOLDING AREA SOURCE TABLE ON SHEET 2

PARCEL NO.	OWNER	TOTAL HOLDING ACRES	FEE SIMPLE ACQUISITION			REMAINDER ACRES	EASEMENTS		PERMANENT TAX NUMBER	PROPERTY ACQUIRED BY	
			GROSS ACRES	PREVIOUSLY DEDICATED ACRES	NET ACRES		PE - PERMANENT ACRES	TE - TEMPORARY ACRES			
B411031	SRT PROPERTIES, LLC, A LIMITED LIABILITY COMPANY TITLE REPORT NO. MA-3433.0	0.6612	0.0055	240	0.0055	240	0.6557	TE-A 0.0048 TE-B 0.0111 PE 0.0023	208 485 100	TE-A - GRADING & ENTRANCE CONSTRUCTION TE-B - GRADING PE - GRADING, DRAINAGE CONSTRUCTION & MAINTENANCE	13-2-21-34-13-302-003.001 13-2-21-34-13-302-003

STATE OF ILLINOIS)
 COUNTY OF MONTGOMERY) SS

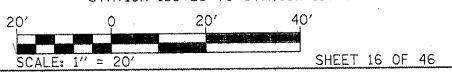
I, TONY HARD, AN ILLINOIS PROFESSIONAL LAND SURVEYOR, STATE THAT I HAVE SURVEYED THE PLAT OF HIGHWAY SHOWN HEREON AND THAT THIS PROFESSIONAL SERVICE CONFORMS TO THE CURRENT ILLINOIS MINIMUM STANDARDS FOR A BOUNDARY SURVEY FOR THE PROPOSED PARCEL(S) TO BE ACQUIRED BY THE STATE OF ILLINOIS, DEPARTMENT OF TRANSPORTATION, SHOWN HEREON.

DATED October 5, 2009
Tony Hard
 TONY HARD, PLS NO. 2953



McDonough-Whitlow, P.C.
 Consulting Engineers & Land Surveyors
 138 East Wood Street
 Hillsboro, IL 62049
 Phone: 217.532.9233
 Fax: 217.532.6300
 PROFESSIONAL DESIGN NO. 184-002754

ILLINOIS DEPARTMENT OF TRANSPORTATION
 PLAT OF HIGHWAYS
 FAP ROUTE 600 (IL 159)
 SECTION 60-(30,31,128)-1
 MADISON COUNTY
 JOB NO. R-98-011-04
 STATION 133+25 TO STATION 135+50



ILLINOIS DEPARTMENT OF TRANSPORTATION
 DIVISION OF HIGHWAYS/REGION 5/DISTRICT 8
 1102 EASTPORT PLAZA DRIVE
 COLLINSVILLE, ILLINOIS 62234-6198

F.A.P. R.T.E.	SECTION	COUNTY	TOTAL SHEETS	SHEET NO.
600	60-(30,31,128)-1	MADISON	399	197

COMPLETION DATE OF FIELD WORK PERFORMED
 LAND SURVEY: 10-11-05 ROW STAKING: 09-17-09
 CONTRACT NO. 76830