

PART OF THE NW 1/4 OF SECTION 34, T3N, R8W, OF THE 3RD PM, MADISON COUNTY, ILLINOIS

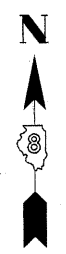
CURVE TABLE									
CURVE	PI STA.	Δ	TANGENT	LENGTH	RADIUS	CHORD	CHORD BEARING	PC STA.	PT STA.
159ULT-4	144+22.16	13°48'00" (LT)	93.54'	186.18'	773.00'	185.73'	N 15°58'48" W	143+28.62	145+14.80
C3	605+28.33	13°46'45" (LT)	98.84'	196.72'	818.50'	196.25'	N 15°57'21" W	605+28.33	607+25.05

SEE BASIS OF COORDINATES AND BEARINGS STATEMENT ON SHEET 2

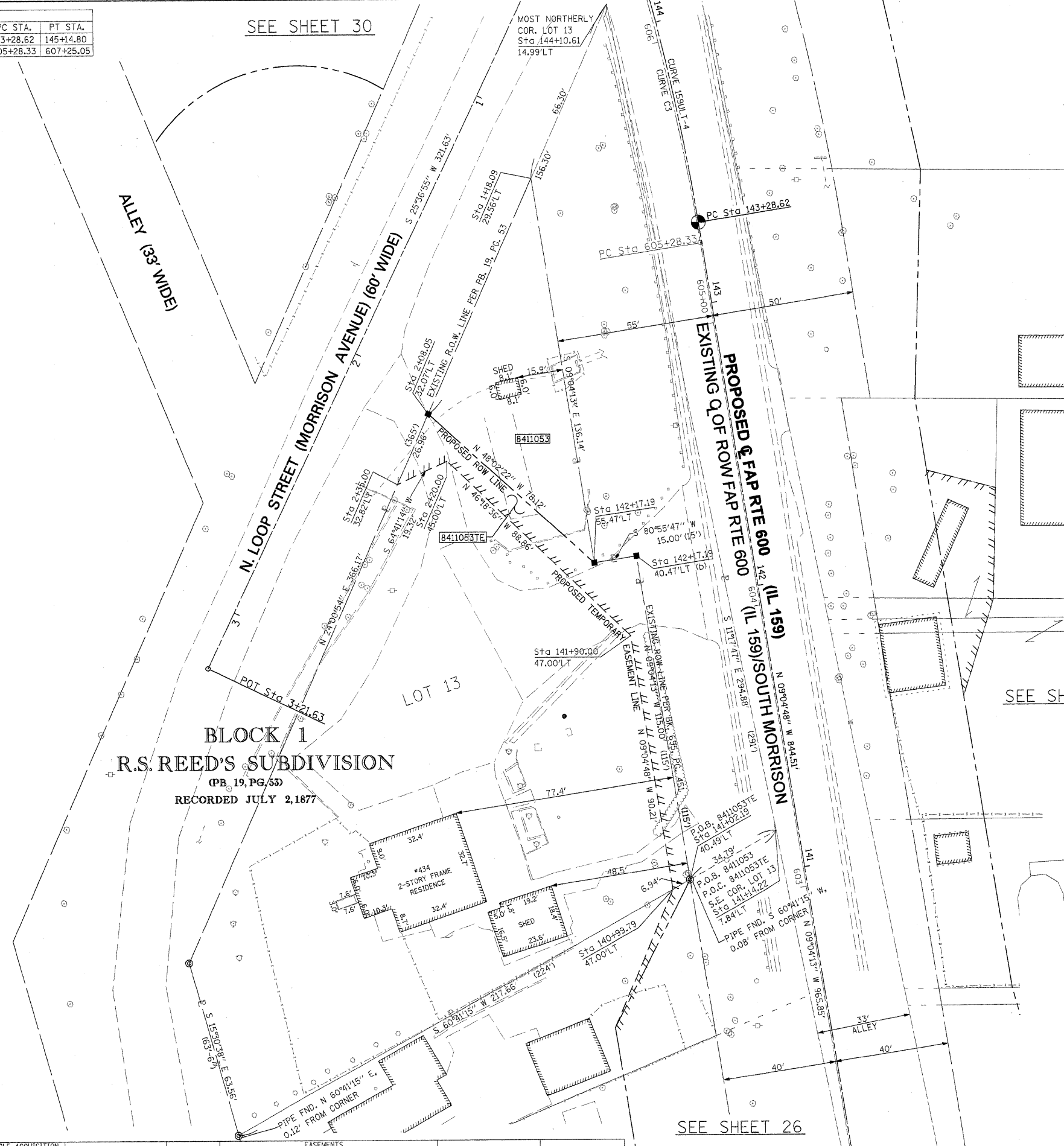
COORDINATE TABLE				
STATION	OFFSET	NORTH	EAST	
2+08.05	32.07' LT	728,287.0422	349,132.3094	
1+18.09	29.56' LT	728,369.2517	349,168.9372	
142+17.19	55.47' LT	728,234.8096	349,190.4000	
134+84.11	PT	727,519.6675	349,360.8661	
143+28.62	PC	728,353.5933	349,227.5911	
3+21.63	POT	728,198.4920	349,054.2900	
0+00.00	POT	728,488.5095	349,193.3374	
144+22.16	PI	728,445.9651	349,212.8286	
145+14.80	PT	728,532.1491	349,176.4582	
142+17.19	40.47' LT	728,237.1743	349,205.2125	
141+02.19	40.49' LT	728,123.6124	349,223.3419	

SEE SHEET 46 FOR CONTROL POINTS WITH CROSSTIES
 (a) - SET DRILL HOLE WITH MAG NAIL
 (b) - SET MAG NAIL OR LANDSCAPE NAIL

SEE SHEET 30



SPACE RESERVED FOR RECORDING OFFICER



SEE SHEET 27

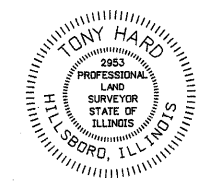
SEE SHEET 26

STATE OF ILLINOIS)
) SS
 COUNTY OF MONTGOMERY)

I, TONY HARD, AN ILLINOIS PROFESSIONAL LAND SURVEYOR, STATE THAT I HAVE SURVEYED THE PLAT OF HIGHWAY SHOWN HEREON AND THAT THIS PROFESSIONAL SERVICE CONFORMS TO THE CURRENT ILLINOIS MINIMUM STANDARDS FOR A BOUNDARY SURVEY FOR THE PROPOSED PARCEL(S) TO BE ACQUIRED BY THE STATE OF ILLINOIS, DEPARTMENT OF TRANSPORTATION, SHOWN HEREON.

DATED October 5, 2009

Tony Hard
 TONY HARD, PLS NO. 2953



* SEE TOTAL HOLDING AREA SOURCE TABLE ON SHEET 2 (License Expires: 11/30/10)

PARCEL NO.	OWNER	TOTAL HOLDING ACRES	GROSS		FEE SIMPLE ACQUISITION PREVIOUSLY DEDICATED AND/OR USED		NET		REMAINDER	EASEMENTS		PERMANENT TAX NUMBER	PROPERTY ACQUIRED BY
			ACRES	SQ. FT.	ACRES	SQ. FT.	ACRES	SQ. FT.		ACRES	SQ. FT.		
8411053	ALAN CARTER TITLE REPORT NO. MA-3580.0	0.8706	0.3063	13,342	0.2295	9,998	0.0768	3,344	0.5643	TE 0.0408	1,779	13-2-21-34-09-101-012	GRADING & ENTRANCE CONSTRUCTION

McDonough-Whitlow, P.C.
 Consulting Engineers & Land Surveyors
 138 East Wood Street
 Hillsboro, IL 62049
 Phone: 217.532.9233
 Fax: 217.532.6300
 PROFESSIONAL DESIGN No. 184-002754

ILLINOIS DEPARTMENT OF TRANSPORTATION
 PLAT OF HIGHWAYS
 FAP ROUTE 600 (IL 159)
 SECTION 60-(30,31,128)-1
 MADISON COUNTY
 JOB NO. R-98-011-04
 STATION 140+75 TO STATION 144+25

SCALE: 1" = 20'
 SHEET 28 OF 46

ILLINOIS DEPARTMENT OF TRANSPORTATION
 DIVISION OF HIGHWAYS/REGION 5/DISTRICT 8
 1102 EASTPORT PLAZA DRIVE
 COLLINGSVILLE, ILLINOIS 62234-6198

F.A.P. RTE.	SECTION	COUNTY	TOTAL SHEETS	SHEET NO.
600	60-(30,31,128)-1	MADISON	399	209

COMPLETION DATE OF FIELD WORK PERFORMED
 LAND SURVEY: 10-11-05 ROW STAKING: 09-17-09
 FED. ROAD DIST. NO. ILLINOIS FED. AID PROJECT
 CONTRACT NO. 76830