

PART OF THE NW 14 OF SECTION 34, T3N, R8W, OF THE 3RD PM, MADISON COUNTY, ILLINOIS

SEE BASIS OF COORDINATES AND BEARINGS STATEMENT ON SHEET 2

COORDINATE TABLE			
STATION	OFFSET	NORTH	EAST
148+47.76	29.93' LT	728,827.2763	349,019.4255
148+47.80	33.00' LT	728,826.1156	349,016.5839
149+32.25	32.36' LT	728,904.1748	348,984.3316
149+32.28	34.89' LT	728,903.2215	348,981.9977
149+15.72	29.48' LT	728,890.0648	348,993.4222
145+14.80	PT	728,532.1491	349,176.4582
155+02.21	PC	729,441.8691	348,792.5492

SEE SHEET 46 FOR CONTROL POINTS WITH CROSSTIES
 (a) - SET DRILL HOLE WITH MAG NAIL
 (b) - SET MAG NAIL OR LANDSCAPE NAIL

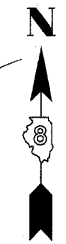
SEE SHEET 38

LOT 10
 E.W. COLLINS 2ND ADDITION
 (PB 20, PG 21)

BLOCK 2
 R.S. REED'S SUBDIVISION
 (PB 19, PG. 33)
 RECORDED JULY 2, 1877

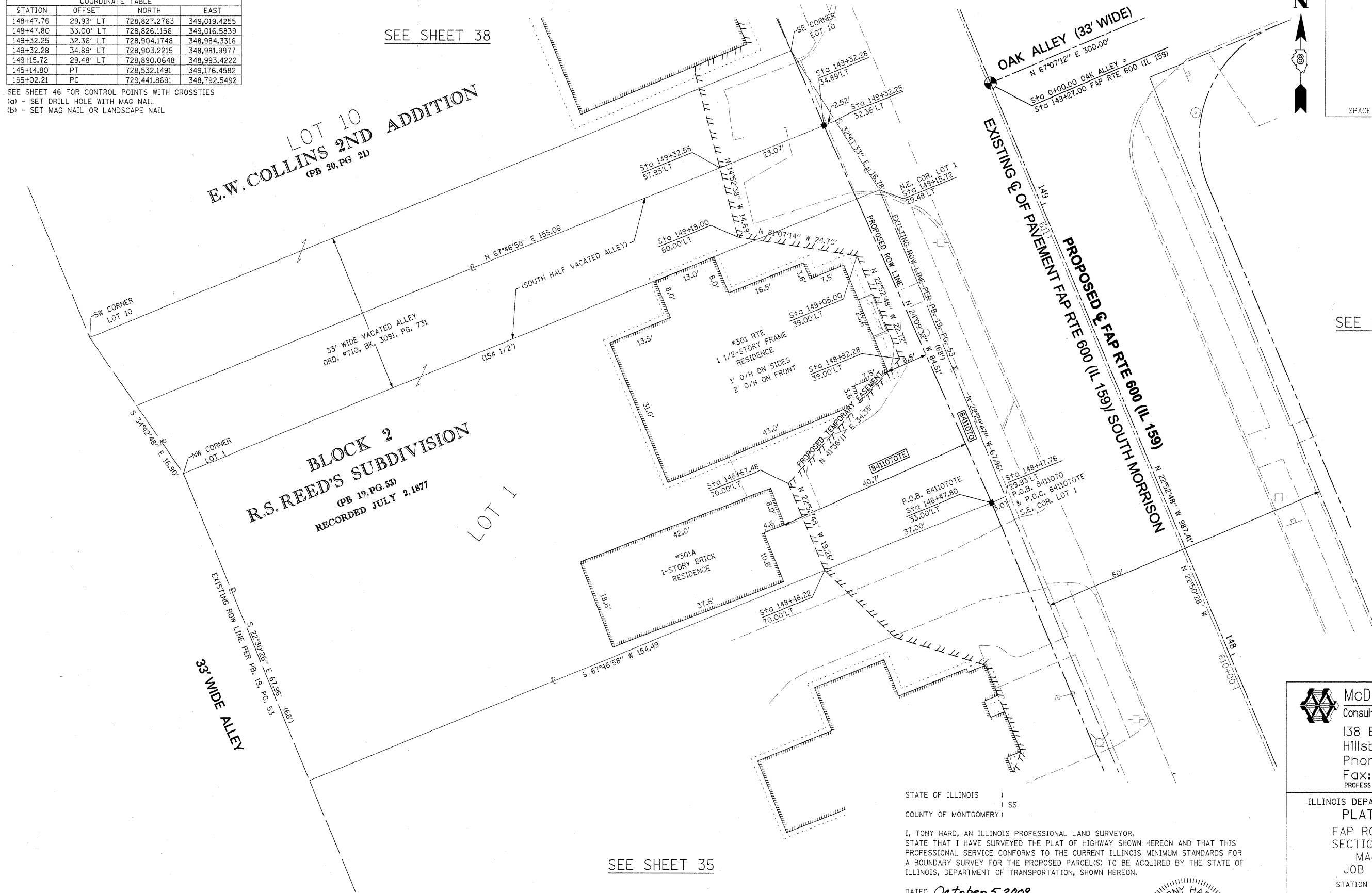
LOT 1

SEE SHEET 35



SPACE RESERVED FOR RECORDING OFFICER

SEE SHEET 36



STATE OF ILLINOIS)
) SS
 COUNTY OF MONTGOMERY)

I, TONY HARD, AN ILLINOIS PROFESSIONAL LAND SURVEYOR, STATE THAT I HAVE SURVEYED THE PLAT OF HIGHWAY SHOWN HEREON AND THAT THIS PROFESSIONAL SERVICE CONFORMS TO THE CURRENT ILLINOIS MINIMUM STANDARDS FOR A BOUNDARY SURVEY FOR THE PROPOSED PARCEL(S) TO BE ACQUIRED BY THE STATE OF ILLINOIS, DEPARTMENT OF TRANSPORTATION, SHOWN HEREON.

DATED October 5, 2009
Tony Hard
 TONY HARD, PLS NO. 2953



McDonough-Whitlow, P.C.
 Consulting Engineers & Land Surveyors
 138 East Wood Street
 Hillsboro, IL 62049
 Phone: 217.532.9233
 Fax: 217.532.6300
 PROFESSIONAL DESIGN NO. 184-002754

ILLINOIS DEPARTMENT OF TRANSPORTATION
 PLAT OF HIGHWAYS
 FAP ROUTE 600 (IL 159)
 SECTION 60-(30,31,128)-1
 MADISON COUNTY
 JOB NO. R-98-011-04
 STATION 148+25 TO STATION 149+50

SCALE: 1" = 10'
 SHEET 37 OF 46

ILLINOIS DEPARTMENT OF TRANSPORTATION
 DIVISION OF HIGHWAYS/REGION 5/DISTRICT 8
 1102 EASTPORT PLAZA DRIVE
 COLLINSVILLE, ILLINOIS 62234-6198

F.A.P. RTE.	SECTION	COUNTY	TOTAL SHEETS	SHEET NO.
600	60-(30,31,128)-1	MADISON	374	219

COMPLETION DATE OF FIELD WORK PERFORMED		CONTRACT NO. 76830	
LAND SURVEY: 10-11-05	ROW STAKING: 09-17-09	FED. ROAD DIST. NO.	ILLINOIS FED. AID PROJECT

* SEE TOTAL HOLDING AREA SOURCE TABLE ON SHEET 2

PARCEL NO.	OWNER	TOTAL HOLDING ACRES	FEE SIMPLE ACQUISITION		REMAINDER ACRES	EASEMENTS		PERMANENT TAX NUMBER	PROPERTY ACQUIRED BY
			GROSS ACRES	SQ. FT.		PE = PERMANENT TE = TEMPORARY	EASEMENT PURPOSE		
8411070	MICHAEL D. LAKE TITLE COMMITMENT NO. MA-3587.0	0.2997	0.0078	338	0.2919	TE 0.0387	1,684	GRADING, ENTRANCE & SIDEWALK CONSTRUCTION	13-2-21-34-09-101-004