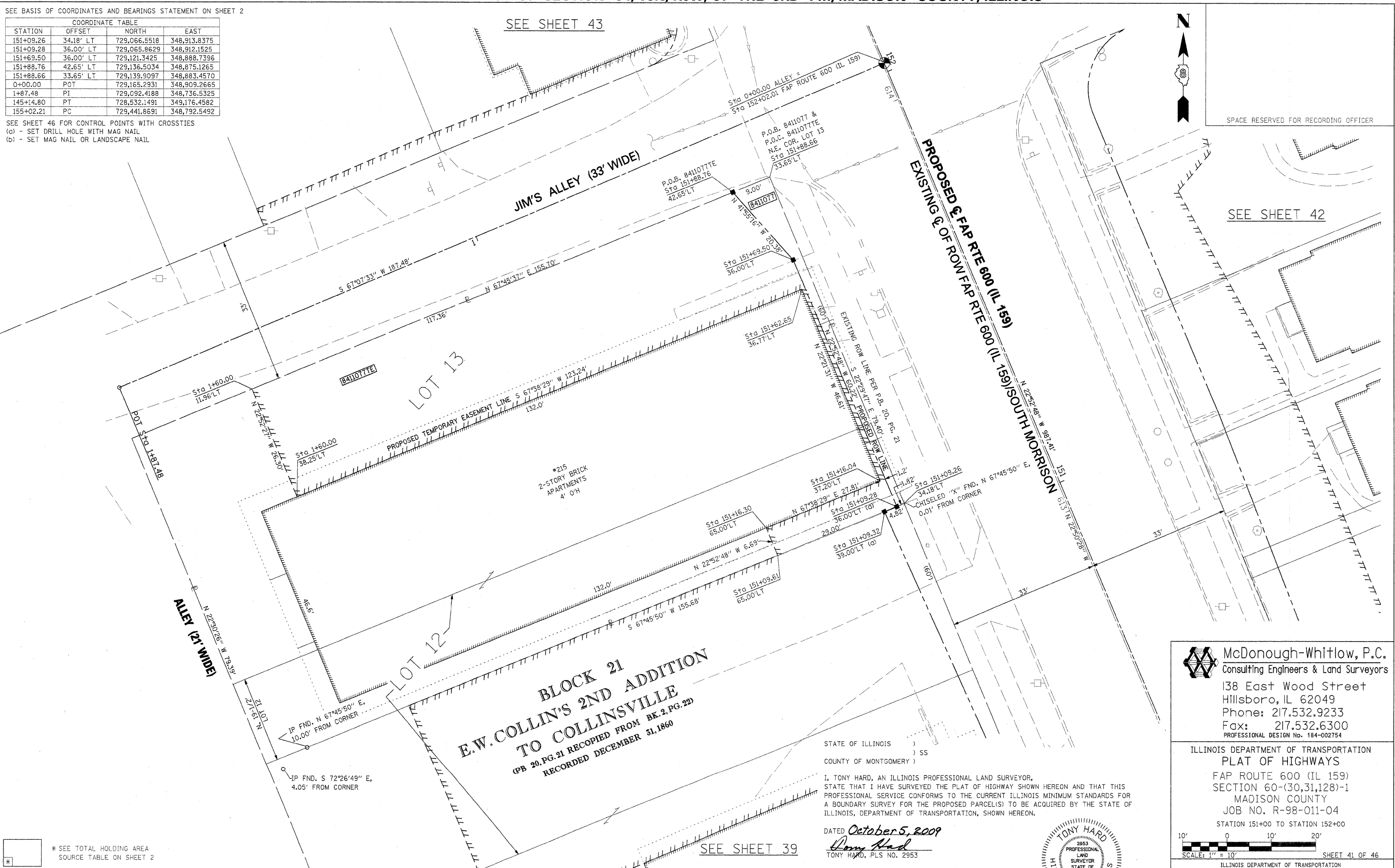


**PART OF THE NW 14 OF SECTION 34, T3N, R8W, OF THE 3RD PM, MADISON COUNTY, ILLINOIS**

SEE BASIS OF COORDINATES AND BEARINGS STATEMENT ON SHEET 2

COORDINATE TABLE			
STATION	OFFSET	NORTH	EAST
151+09.26	34.18' LT	729,066.5518	348,913.8375
151+09.28	36.00' LT	729,065.8629	348,912.1525
151+69.50	36.00' LT	729,121.3425	348,888.7396
151+88.76	42.65' LT	729,136.5034	348,875.1265
151+88.66	33.65' LT	729,139.9097	348,883.4570
0+00.00	POT	729,165.2931	348,909.2665
1+87.48	PI	729,092.4188	348,736.5325
145+14.80	PT	728,532.1491	349,176.4582
155+02.21	PC	729,441.8691	348,792.5492

SEE SHEET 46 FOR CONTROL POINTS WITH CROSSTIES  
 (a) - SET DRILL HOLE WITH MAG NAIL  
 (b) - SET MAG NAIL OR LANDSCAPE NAIL

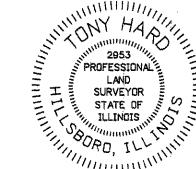


**BLOCK 21  
 E.W. COLLIN'S 2ND ADDITION  
 TO COLLINSVILLE**  
 (PB 20, PG. 21 RECORDED FROM BK. 2, PG. 22)  
 RECORDED DECEMBER 31, 1860

STATE OF ILLINOIS )  
 ) SS  
 COUNTY OF MONTGOMERY )

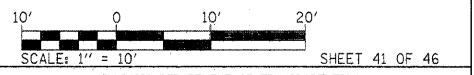
I, TONY HARD, AN ILLINOIS PROFESSIONAL LAND SURVEYOR, STATE THAT I HAVE SURVEYED THE PLAT OF HIGHWAY SHOWN HEREON AND THAT THIS PROFESSIONAL SERVICE CONFORMS TO THE CURRENT ILLINOIS MINIMUM STANDARDS FOR A BOUNDARY SURVEY FOR THE PROPOSED PARCEL(S) TO BE ACQUIRED BY THE STATE OF ILLINOIS, DEPARTMENT OF TRANSPORTATION, SHOWN HEREON.

DATED October 5, 2009  
*Tony Hard*  
 TONY HARD, PLS NO. 2953



**McDonough-Whitlow, P.C.**  
 Consulting Engineers & Land Surveyors  
 138 East Wood Street  
 Hillsboro, IL 62049  
 Phone: 217.532.9233  
 Fax: 217.532.6300  
 PROFESSIONAL DESIGN NO. 184-002754

ILLINOIS DEPARTMENT OF TRANSPORTATION  
 PLAT OF HIGHWAYS  
 FAP ROUTE 600 (IL 159)  
 SECTION 60-(30,31,128)-1  
 MADISON COUNTY  
 JOB NO. R-98-011-04  
 STATION 151+00 TO STATION 152+00



ILLINOIS DEPARTMENT OF TRANSPORTATION  
 DIVISION OF HIGHWAYS/REGION 5/DISTRICT 8  
 1102 EASTPORT PLAZA DRIVE  
 COLLINSVILLE, ILLINOIS 62234-6198

F.A.P. RTE.	SECTION	COUNTY	TOTAL SHEETS	SHEET NO.
600	60-(30,31,128)-1	MADISON	399	223
FED. ROAD DIST. NO. [ILLINOIS] FED. AID PROJECT			CONTRACT NO. 76830	

\* SEE TOTAL HOLDING AREA SOURCE TABLE ON SHEET 2

PARCEL NO.	OWNER	TOTAL HOLDING ACRES	GROSS		FEE SIMPLE ACQUISITION		NET		REMAINDER ACRES	EASEMENTS		PERMANENT TAX NUMBER	PROPERTY ACQUIRED BY
			ACRES	SQ. FT.	PREVIOUSLY DEDICATED ACRES	AND/OR USED SQ. FT.	ACRES	SQ. FT.		PE = PERMANENT ACRES	TE = TEMPORARY SQ. FT.		
8411077	LOZALIVING, L.L.C., A MISSOURI LIMITED LIABILITY COMPANY TITLE REPORT NO. MA-3590.0	0.2838	0.0053	229	0	0	0.0053	229	0.2785	TE 0.0786	3,422	13-2-21-34-09-101-001	

COMPLETION DATE OF FIELD WORK PERFORMED	
LAND SURVEY: 10-11-05	ROW STAKING: 09-17-09