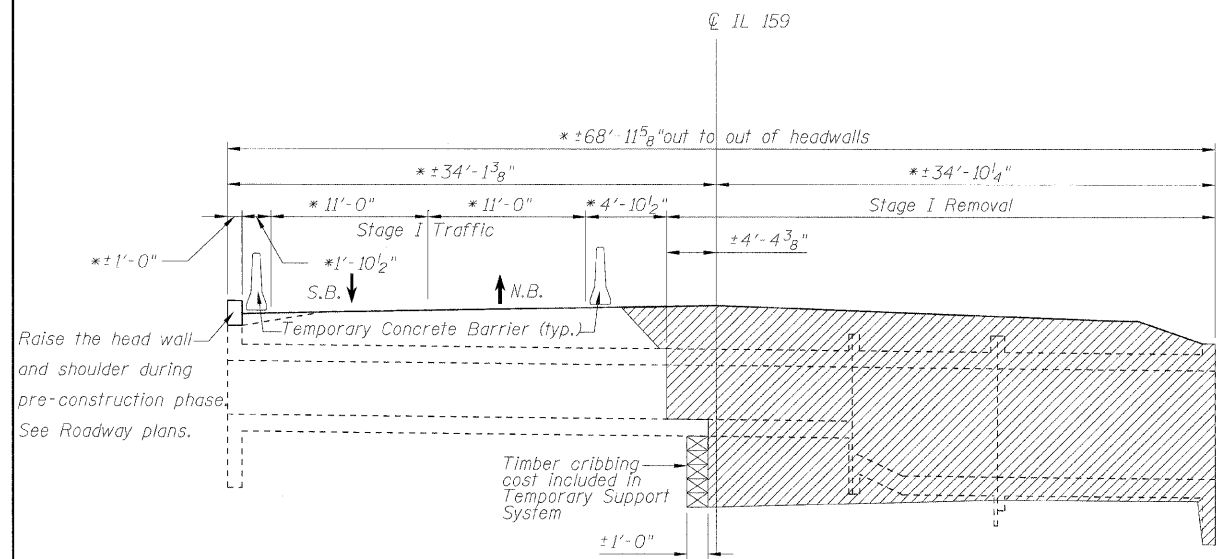
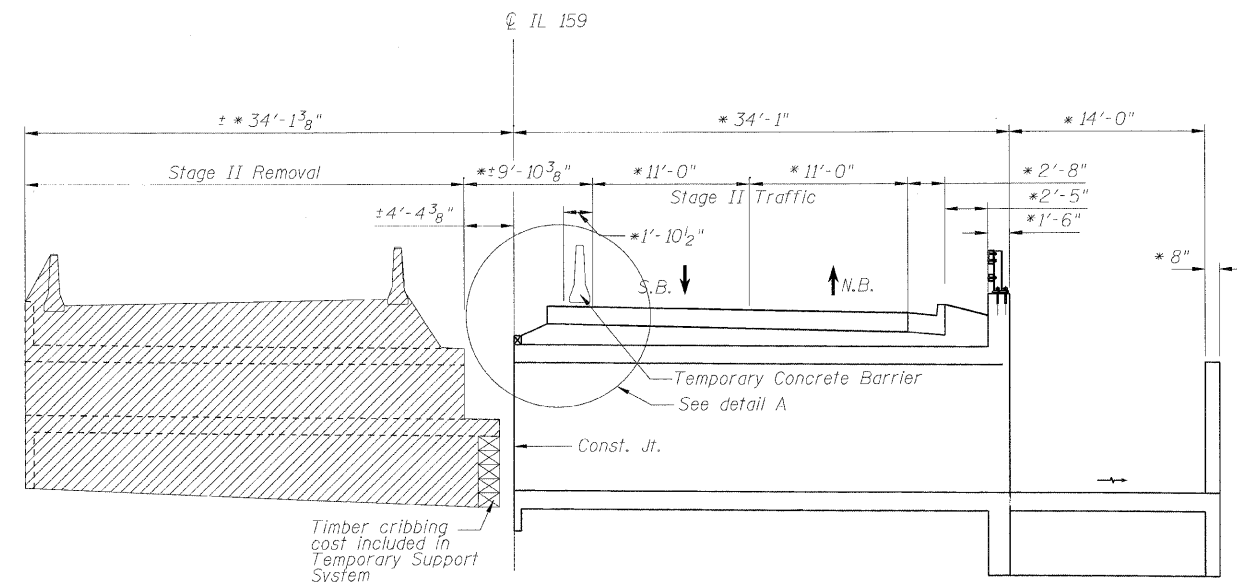


STATE OF ILLINOIS  
DEPARTMENT OF TRANSPORTATION



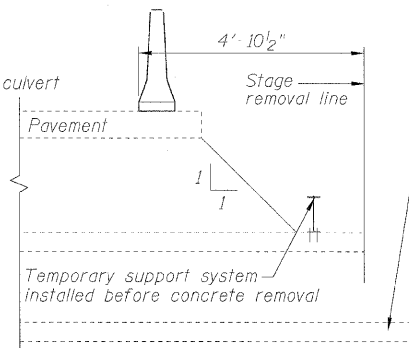
**LONGITUDINAL SECTION**  
**STAGE I REMOVAL**

\* Dimensions are at right angles to  $\perp$  Roadway Reference line at  $\perp$  culvert

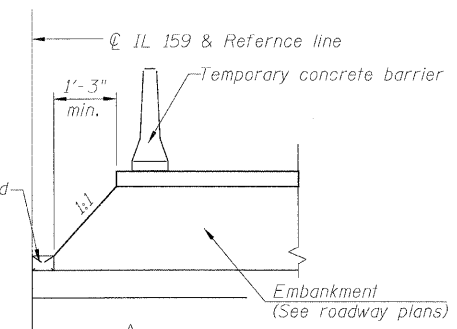


**LONGITUDINAL SECTION**  
**STAGE II REMOVAL**

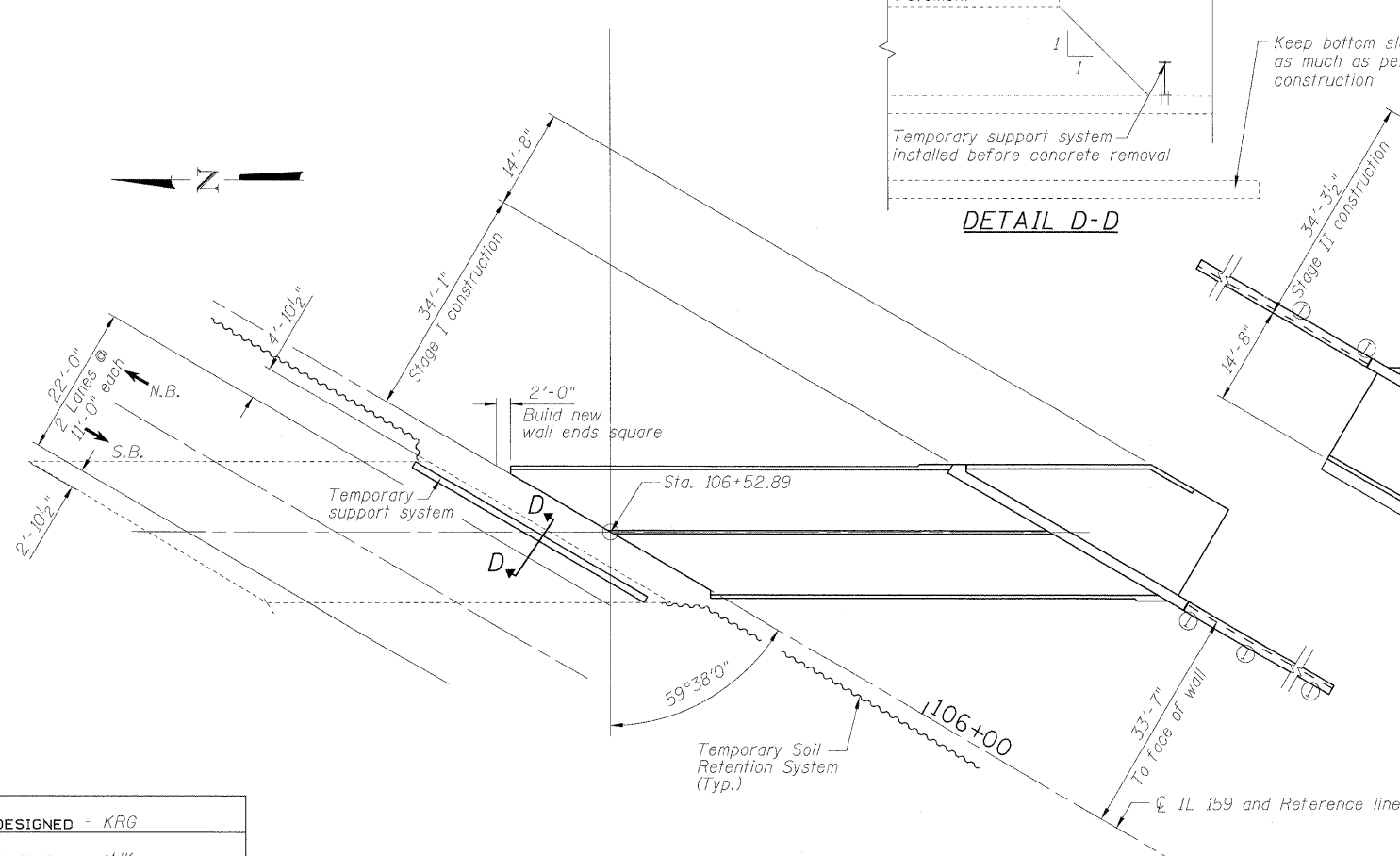
\* Dimensions are at right angles to  $\perp$  Roadway Reference line at  $\perp$  culvert



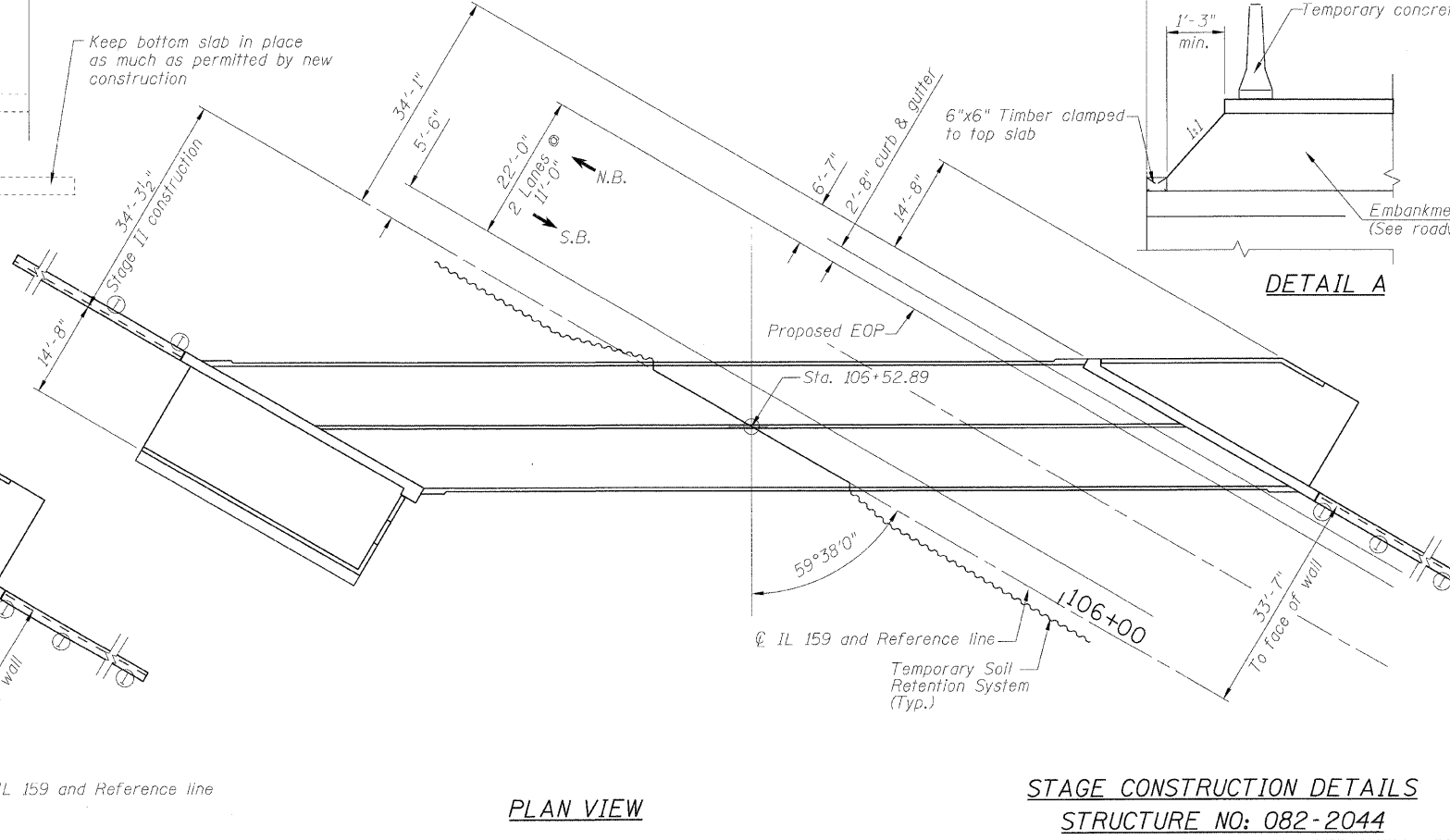
**DETAIL D-D**



**DETAIL A**



**PLAN VIEW**  
**STAGE I CONSTRUCTION**



**PLAN VIEW**  
**STAGE II CONSTRUCTION**

**STAGE CONSTRUCTION DETAILS**  
**STRUCTURE NO: 082-2044**

DESIGNED - KRG
CHECKED - MJK
DRAWN - GSJ
CHECKED - MJK

SHEET NO. 3	F.A.P. RTE.	SECTION	COUNTY	TOTAL SHEETS	SHEET NO.
	600	60-(30,31,128)-1	St. Clair	399	244
15 SHEETS	STRUCTURE NO: 082-2044			CONTRACT NO. 76830	
FED. ROAD DIST. NO. - ILLINOIS FED. AID PROJECT					

MID-AMERICA ENGINEERING SERVICES