

B.M. - # 114 Chiseled on center of N. Headwall for concrete box culvert, located on W. side of IL Rte. 159 in "Buff Truck outfitters" parking lot across from historical landmark "Catsup Bottle" Elev. 475.811

Existing Structure: None

STATE OF ILLINOIS
DEPARTMENT OF TRANSPORTATION

DESIGN SPECIFICATIONS
2002 AASHTO Standard Specifications For Highway Bridges

DESIGN STRESSES

FIELD UNITS
f'c = 3,500 psi
fy = 60,000 psi (Reinforcement)
fy = 36,000 psi (soldier piles)

LEGEND

- TT TT TT TT TT TT TT TT TT Temporary Easement
- Permanent Easement
- Proposed ROW
- Existing ROW

INDEX OF SHEETS

1. General Plan and Elevation
2. General Notes, Cross section & Total Bill of Material
3. Panels A & B
4. Panels C, D, & E
5. Panels F, G, & H
6. Soldier pile wall details
7. Soldier pile wall data
8. Parapet Railing
9. Boring Logs

APPROVED
FOR STRUCTURAL ADEQUACY ONLY

Ralph E. Anderson (TS)
ENGINEER OF BRIDGES AND STRUCTURES

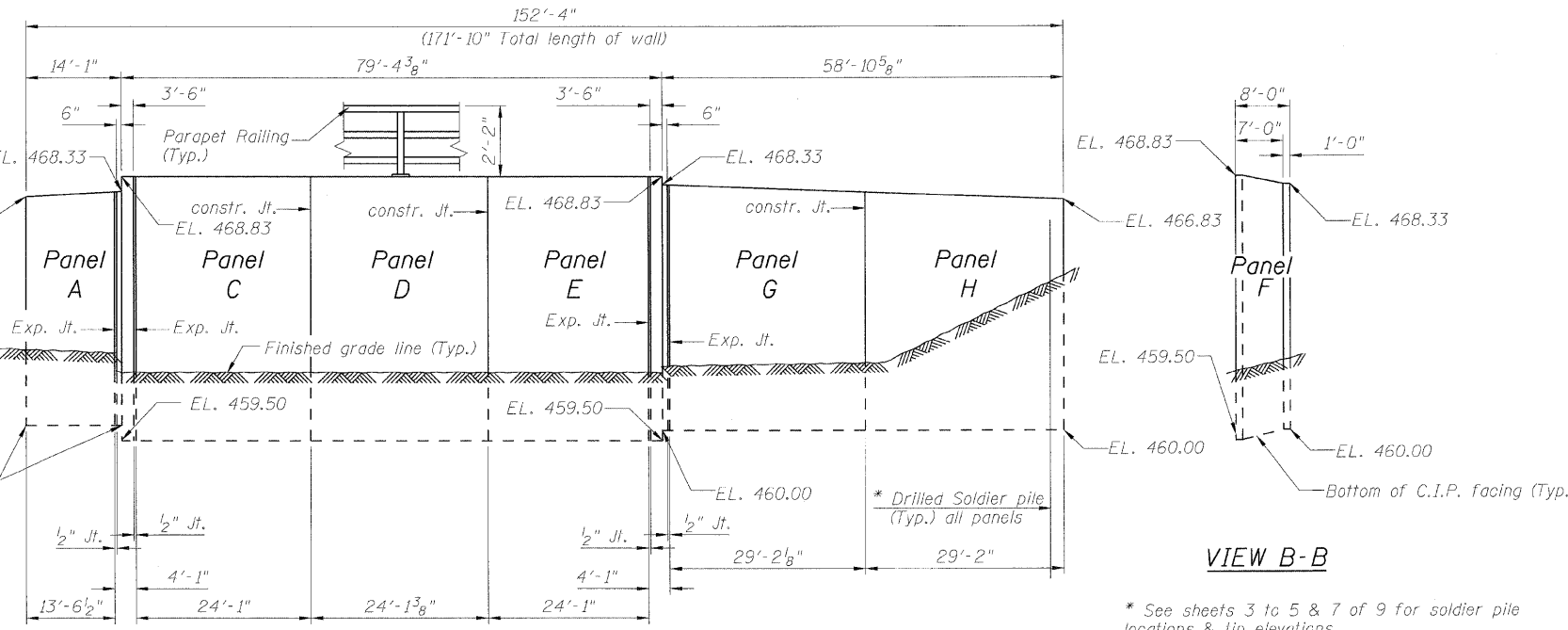


Expires: 11/30/2010

m. j. Karshenas 10-5-2009

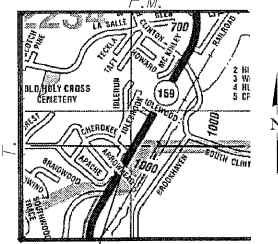
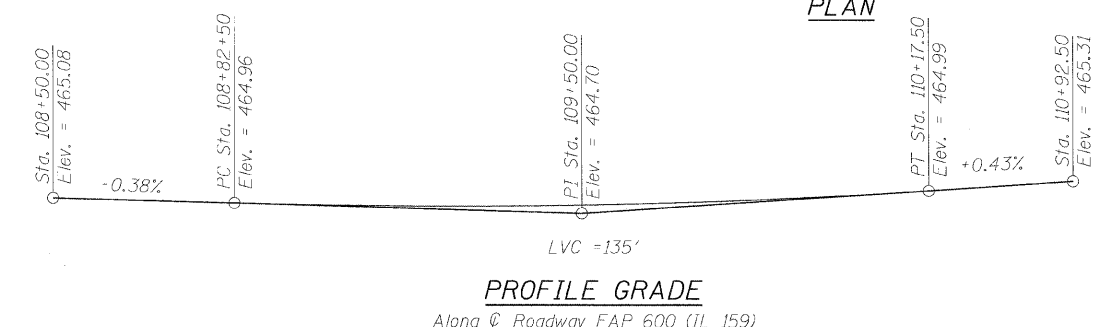
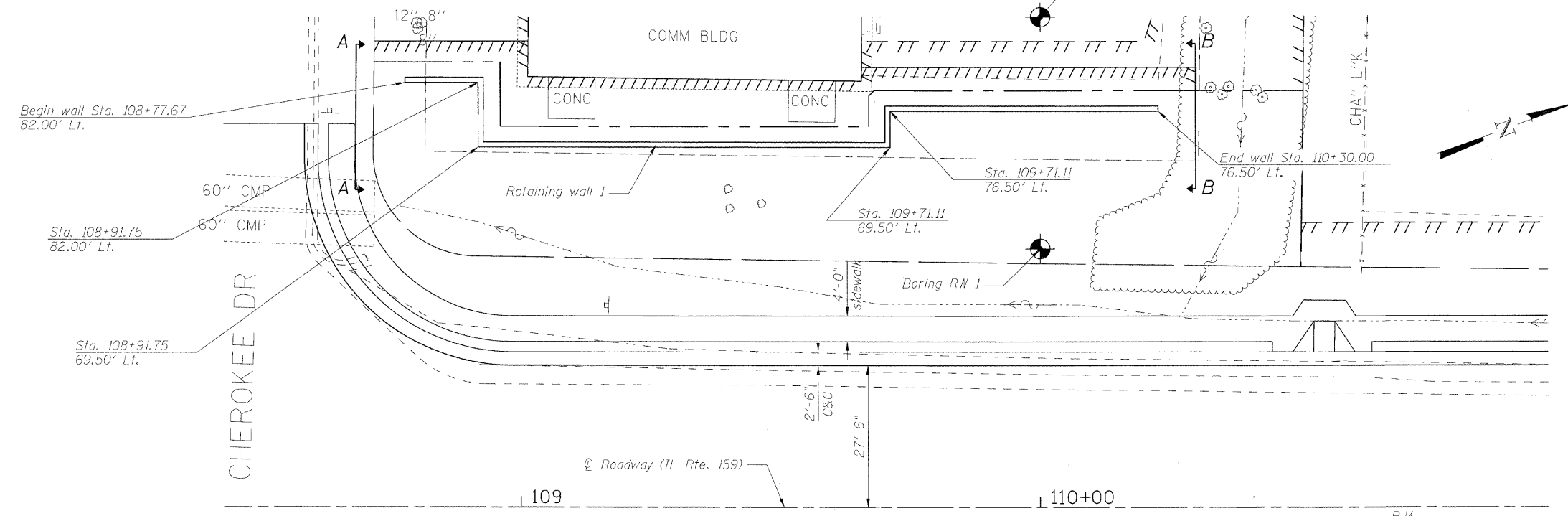
GENERAL PLAN & ELEVATION
IL RTE. 159
FAP ROUTE 600 SEC. 60-(30,31,128)-1
ST. CLAIR COUNTY/MADISON COUNTY
STA. 109+50.00

SHEET NO. 1 9 SHEETS	F.A.P. RTE.	SECTION	COUNTY	TOTAL SHEETS	SHEET NO.
	600	60-(30,31,128)-1	St. Clair/Madison	399	257
RETAINING WALL 1			CONTRACT NO. 76830		
FED. ROAD DIST. NO. ILLINOIS FED. AID PROJECT					



ELEVATION

* See sheets 3 to 5 & 7 of 9 for soldier pile locations & tip elevations.



MID-AMERICA ENGINEERING SERVICES

DESIGNED - KRG
CHECKED - MJK
DRAWN - GSJ
CHECKED - MJK