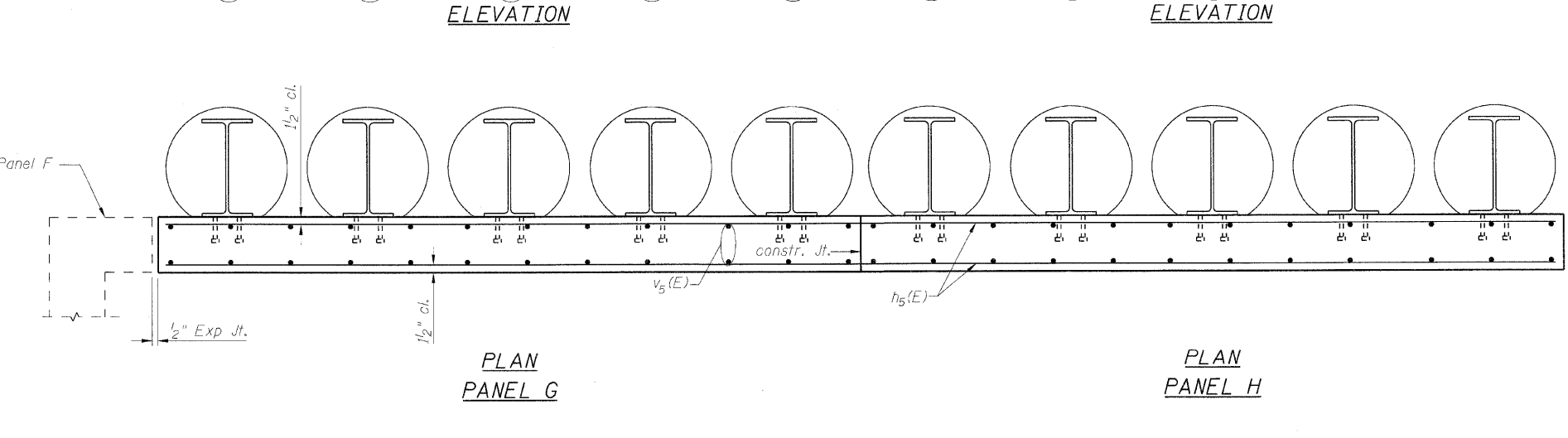
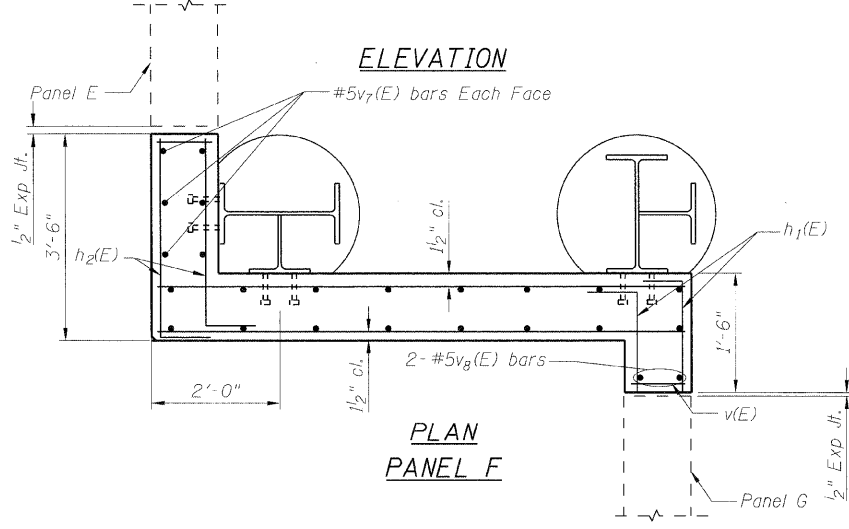
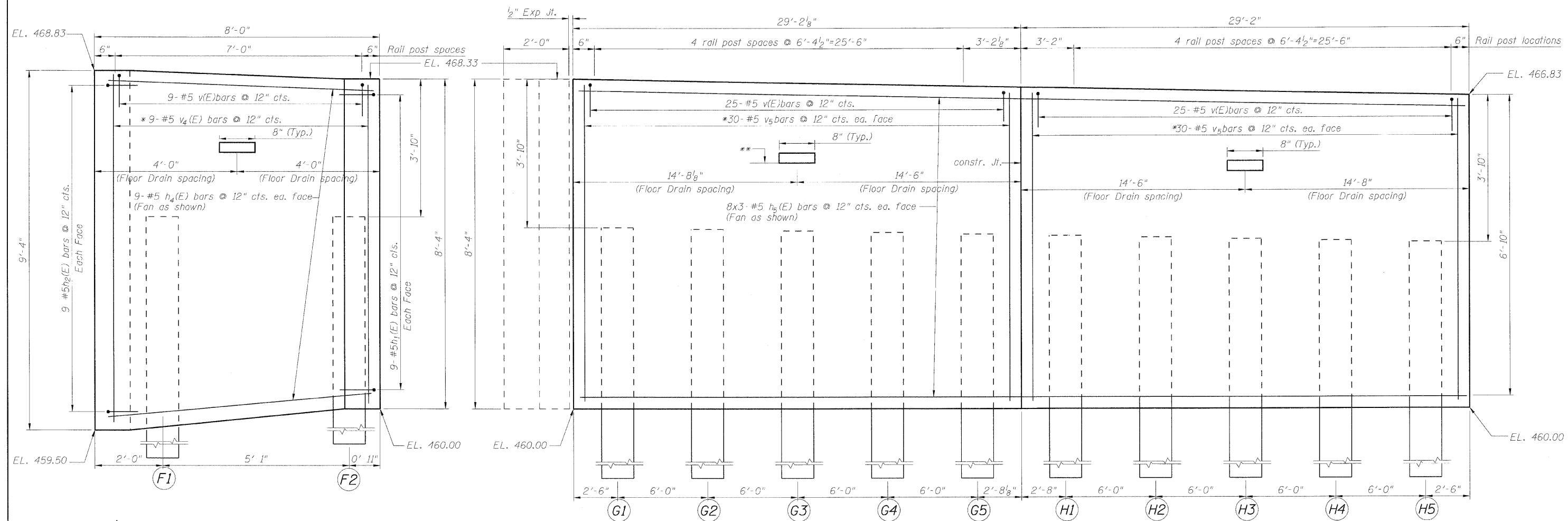


STATE OF ILLINOIS
DEPARTMENT OF TRANSPORTATION



DESIGNED - KRG
CHECKED - MJK
DRAWN - GSI
CHECKED - MJK

Min. bar laps
(unless noted otherwise)
5 bar = 1'-8"

* Order v4(E) & v5(E) bars full length.
Cut to fit the lap and use the remainder on the opposite face. See bar cutting diagram on sht. 7 of 9.
** Ground surface behind the wall (Typ.)

Note: For cross section thru panels & Soldier pile data See sht. 7 of 9. For Expansion Jt. details see 6 of 9. For Floor drain details see sht. 2 of 9.

MID-AMERICA ENGINEERING SERVICES

		PANELS F & G & H			
SHEET NO. 5	F.A.P. RTE.	SECTION	COUNTY	TOTAL SHEETS	SHEET NO.
9 SHEETS	600	60-(30,31,128)-1	St. Clair/Madison	399	261
RETAINING WALL 1			CONTRACT NO. 76830		
FED. ROAD DIST. NO. - ILLINOIS FED. AID PROJECT					