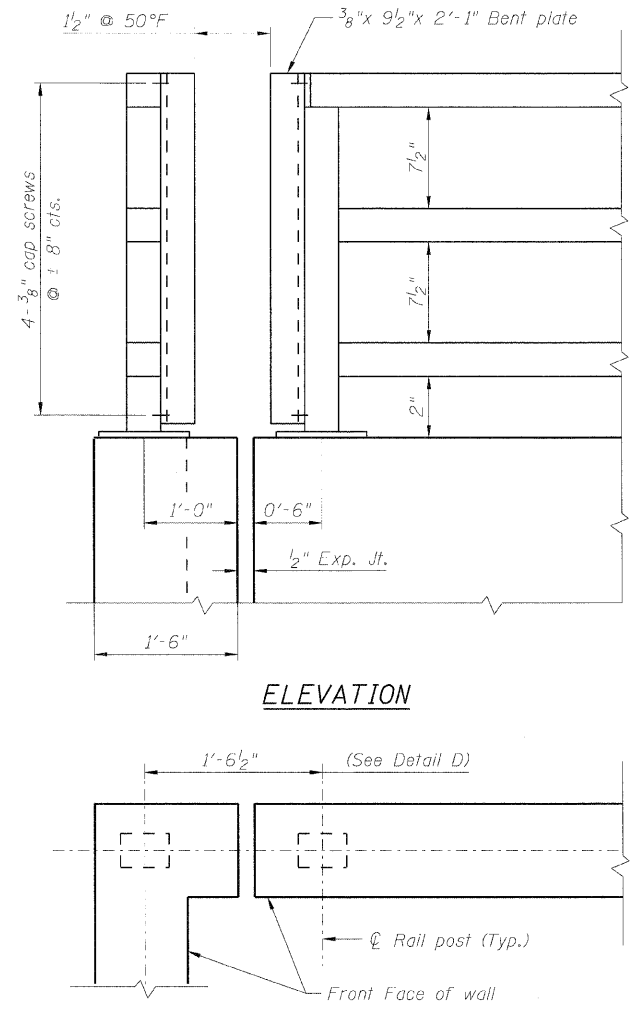


STATE OF ILLINOIS
DEPARTMENT OF TRANSPORTATION

NOTE: All steel railing elements shall be galvanized according to article 509.05 of the Standard Specifications.

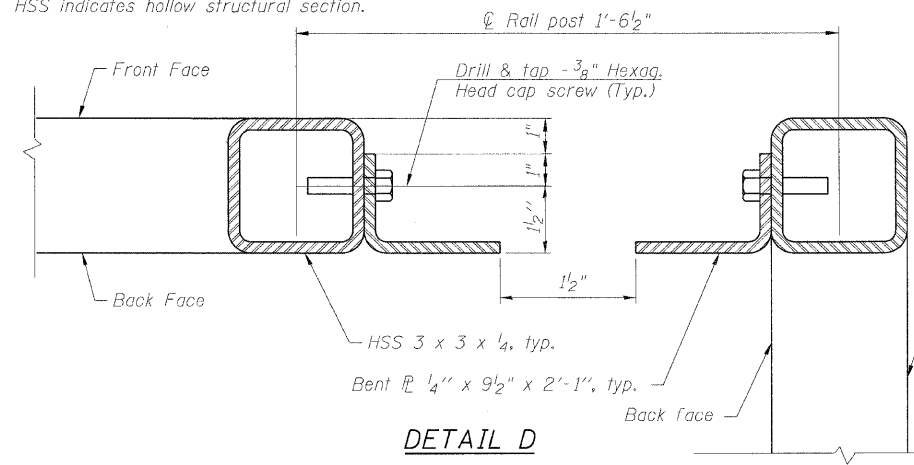
HSS indicates hollow structural section.



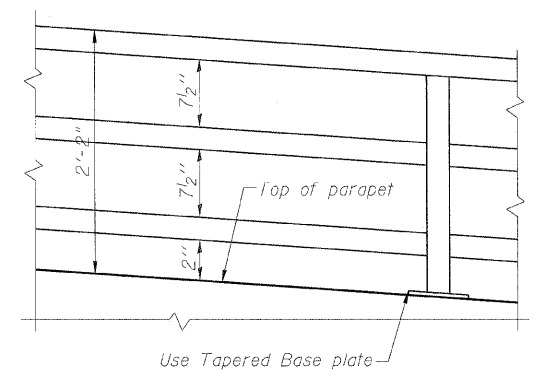
ELEVATION

PLAN

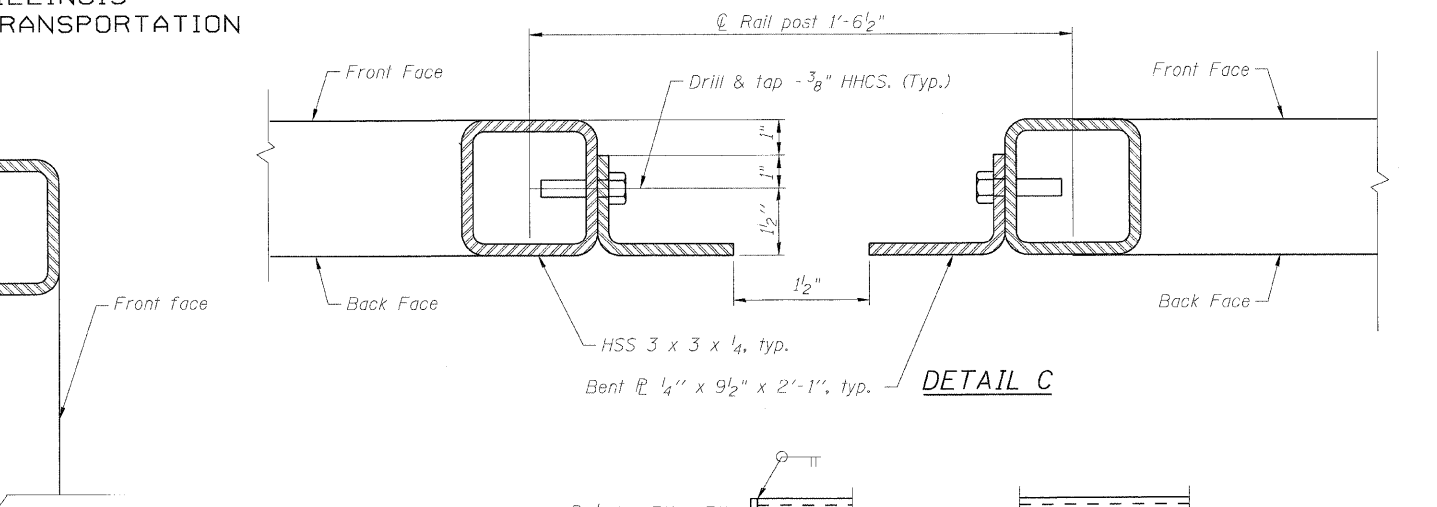
Wall corner detail at station 108+91.75 (82' Lt.) & 109+71.11 (76.50' Lt.)



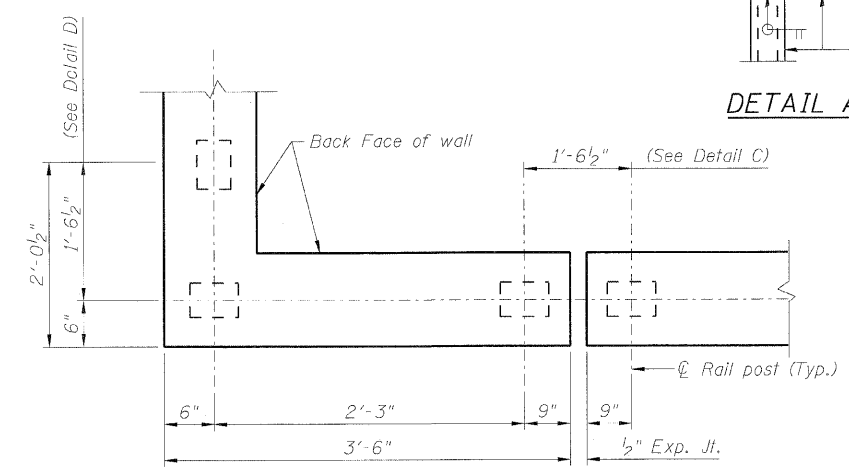
DETAIL D



PARAPET RAILING ELEVATION
(Inclined top of wall)



DETAIL C



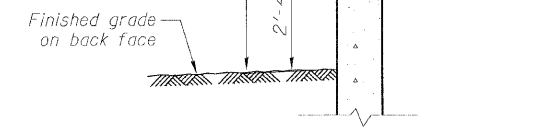
PLAN

Wall corner detail at station 108+91.75 (69.50' Lt.) & 109+71.11 (69.50' Lt.)

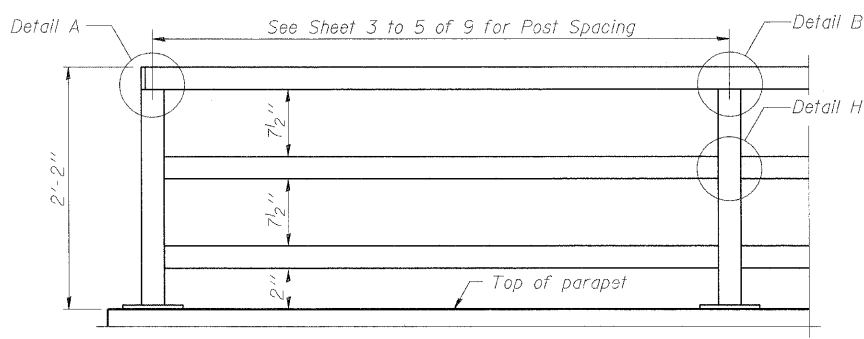
DETAIL A

DETAIL B

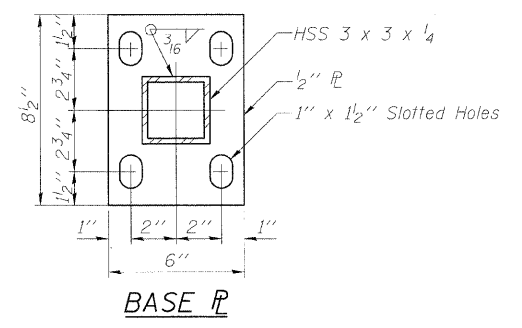
DETAIL H



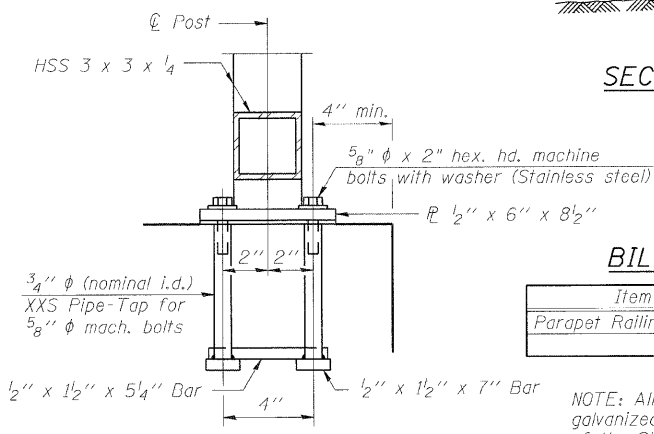
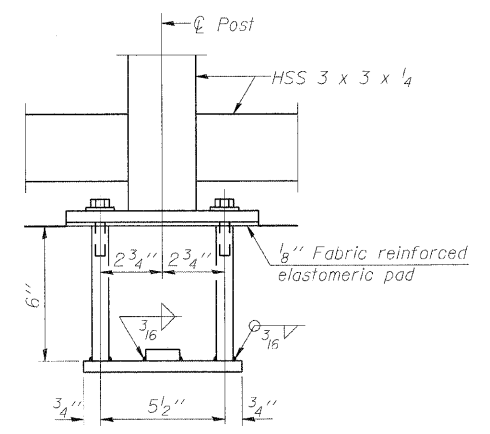
SECTION THRU PARAPET



PARAPET RAILING ELEVATION
(Inside Face of Three Element Rail)



BASE PL



ANCHOR BOLT DETAILS

In lieu of the cast-in-place anchor device shown, the Contractor has the option of drilling and setting 5/8" diameter anchor rods according to Article 509.06 of the Standard Specifications. Embedment shall be according to the manufacturer's specifications.

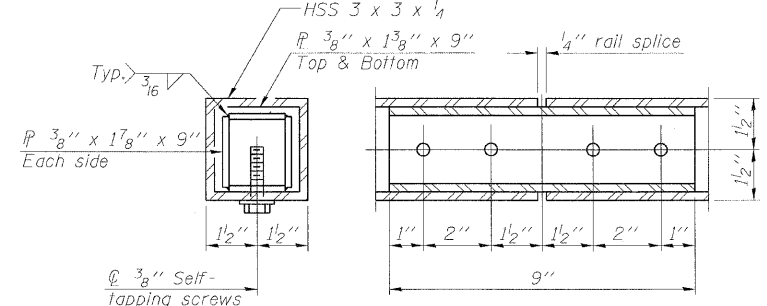
BILL OF MATERIAL

Item	Unit	Quantity
Parapet Railing	Foot	172

NOTE: All steel railing elements shall be galvanized according to article 509.05 of the Standard Specifications.
HHCS designates Hexagonal head cap screws
HSS designates hollow structural section.

PARAPET RAILING

DESIGNED - KRG
CHECKED - MJK
DRAWN - GSJ
CHECKED - MJK



RAIL SPLICE

MID-AMERICA ENGINEERING SERVICES

SHEET NO. 8 9 SHEETS	F.A.P. RTE. 600	SECTION 60-(30,31,128)-1	COUNTY St. Clair/Madison	TOTAL SHEETS 399	SHEET NO. 264
	RETAINING WALL 1		CONTRACT NO. 76830		
FED. ROAD DIST. NO. ILLINOIS FED. AID PROJECT					