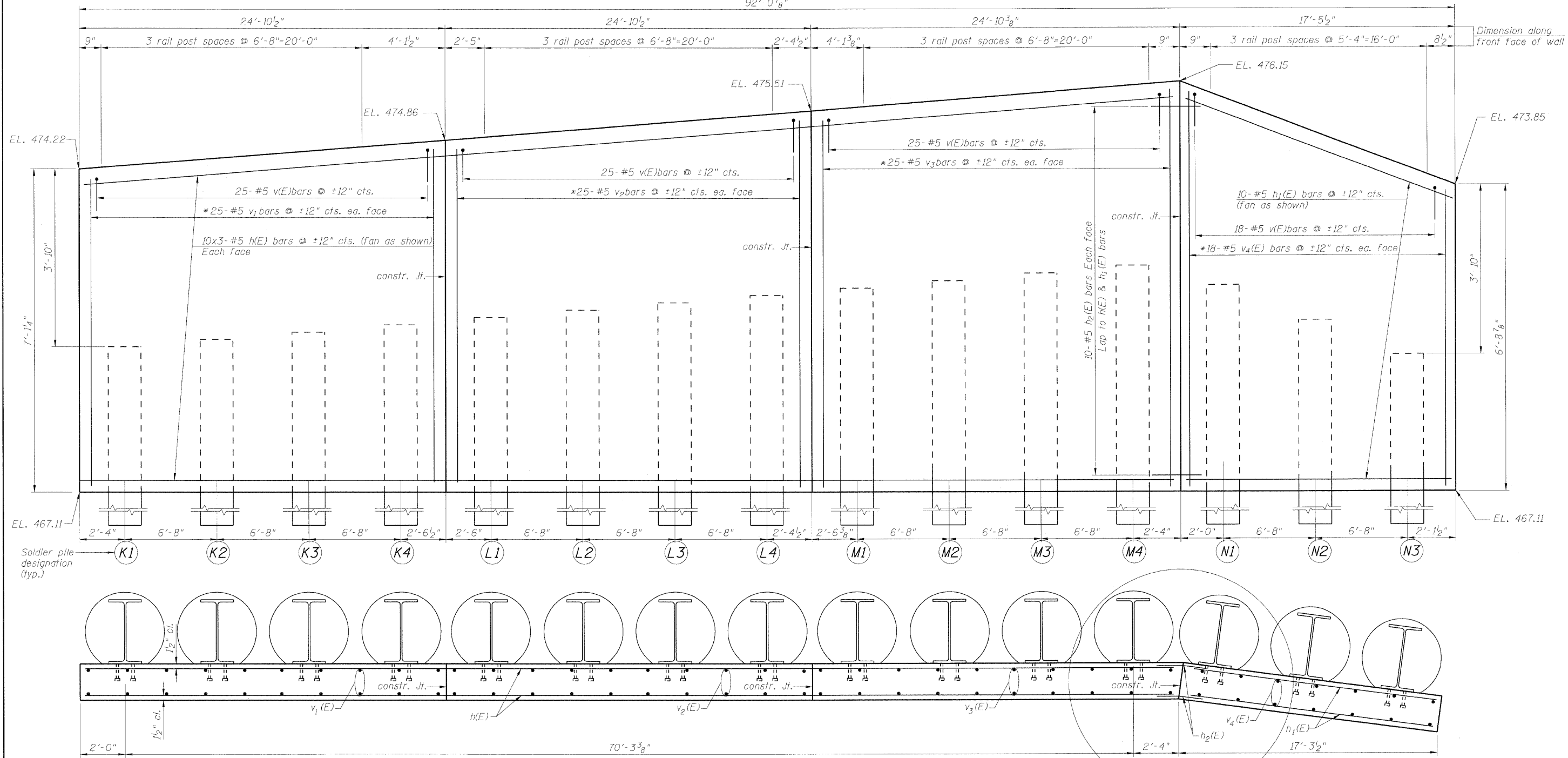


STATE OF ILLINOIS
DEPARTMENT OF TRANSPORTATION
92'-0 7/8"



PLAN
PANEL K

PLAN
PANEL L

PLAN
PANEL M

PLAN
PANEL N

DESIGNED - KRG
CHECKED - MJK
DRAWN - GSJ
CHECKED - MJK

Min. bar laps
(unless noted otherwise)
5 bar = 1'-8"

* Order $v_1(E)$ to $v_4(E)$ bars full length.
Cut to fit the taper and use the
remainder on the opposite face.
See bar cutting diagram on sht. 5 of 7.

Note: For or cross section thru panels & Soldier pile data
See sht. 5 of 7. For constr. Jt. details see 4 of 7.

MID-AMERICA ENGINEERING SERVICES

SHEET NO. 3		PANELS K, L, M & N			
7 SHEETS	F.A.P. RTE. 600	SECTION 60-(30,31,128)-1	COUNTY Madison	TOTAL SHEETS 399	SHEET NO. 268
	RETAINING WALL 2		CONTRACT NO. 76830		
	FED. ROAD DIST. NO. ILLINOIS FED. AID PROJECT				