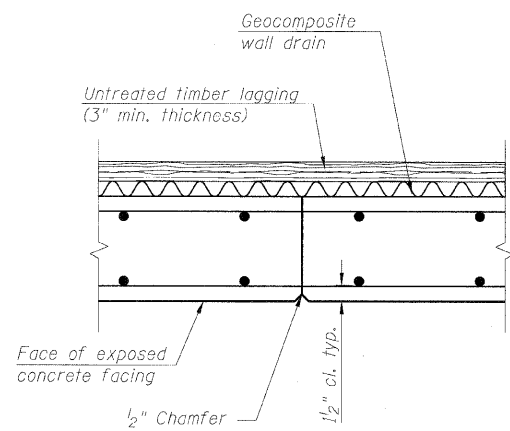
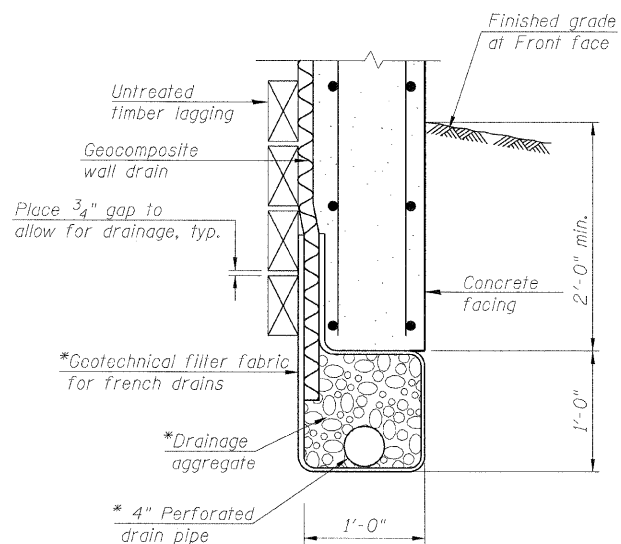


STATE OF ILLINOIS
DEPARTMENT OF TRANSPORTATION

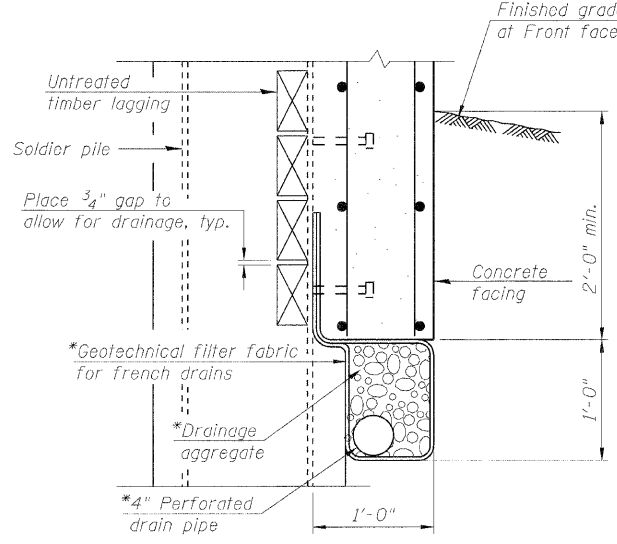


CONSTRUCTION JOINT

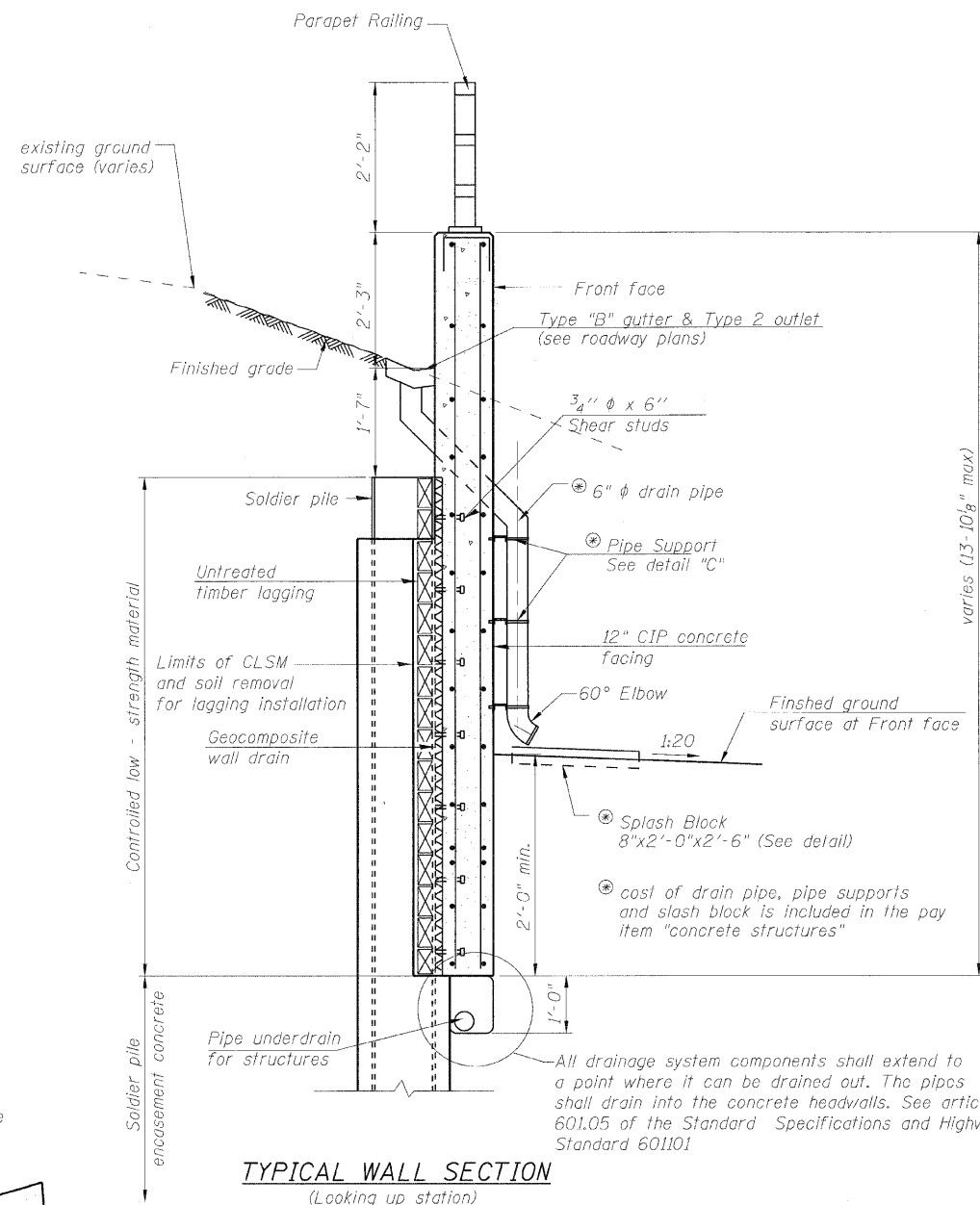
Note: The contractor is responsible for the design and performance of the lagging using no less than 3 in. nominal rough-sawn thickness and timber with a minimum allowable bending stress of 1000 psi.



**UNDER DRAIN DETAIL
BETWEEN SOLDIER PILES**

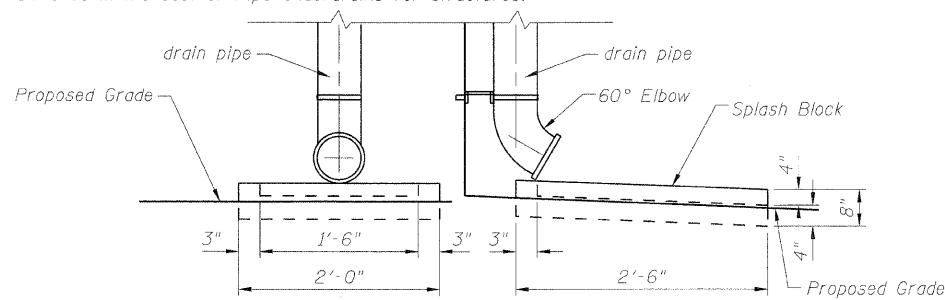


**UNDER DRAIN DETAIL
AT SOLDIER PILES**

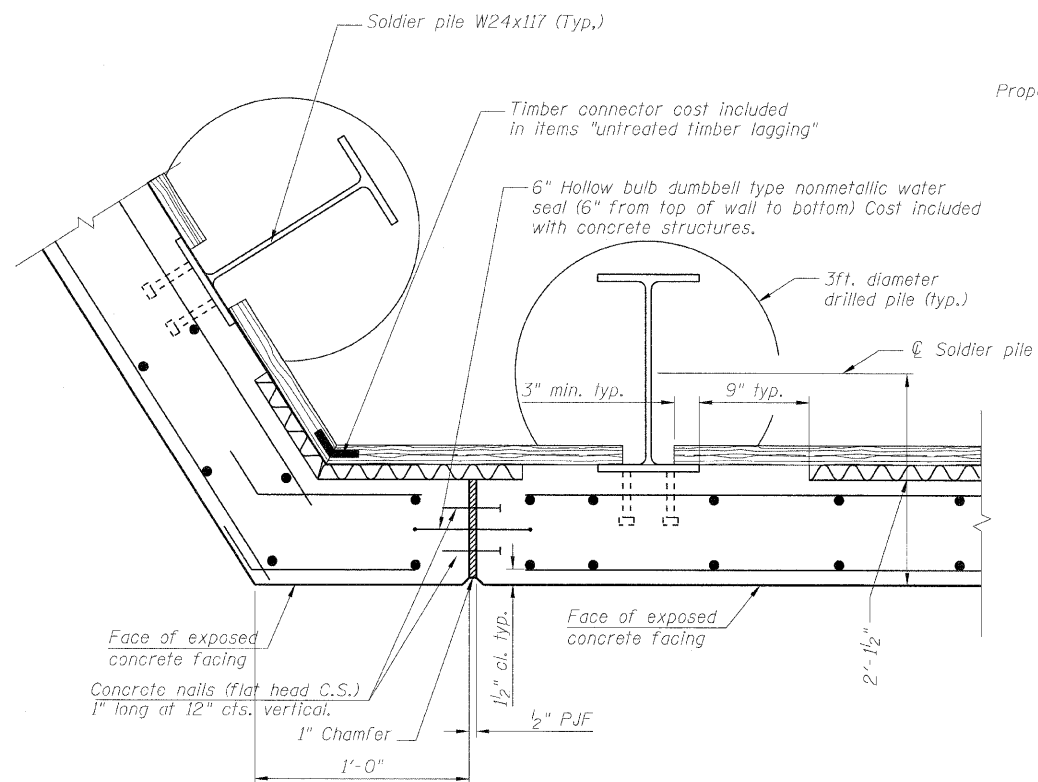


**TYPICAL WALL SECTION
(Looking up station)**

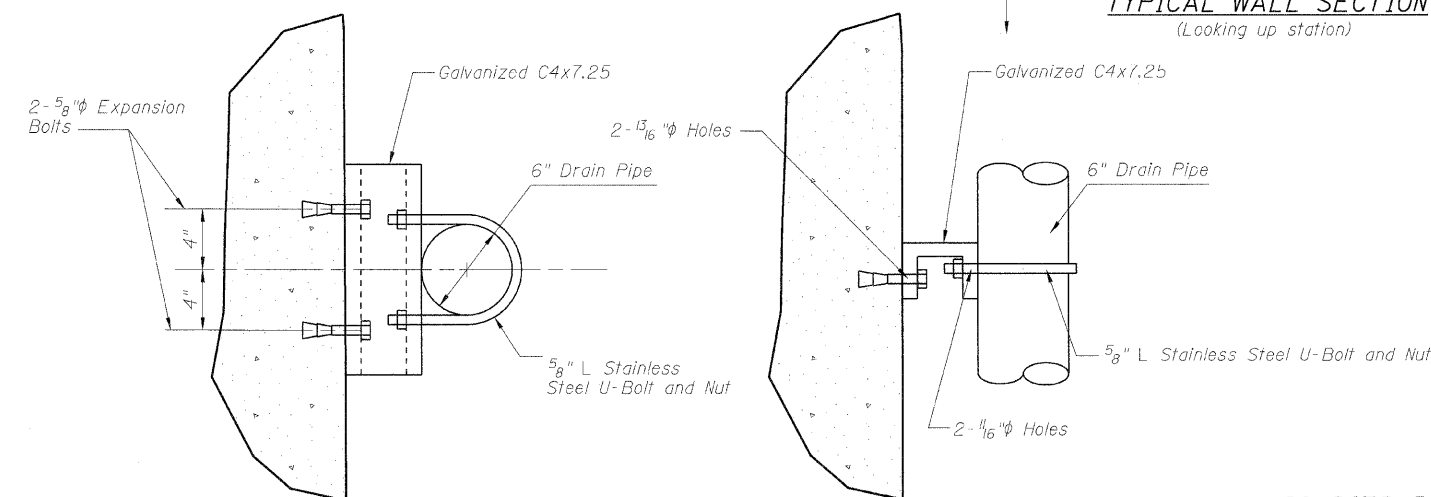
* Included in the cost of Pipe Underdrains for structures.



SLASH BLOCK DETAIL



EXPANSION JOINT



PIPE SUPPORT DETAIL "C"

SOLDIER PILE WALL DETAILS

SHEET NO.	F.A.P. RTE.	SECTION	COUNTY	TOTAL SHEETS	SHEET NO.
5	600	60-(30,31,128)-1	Madison	399	276
8 SHEETS		RETAINING WALL 3		CONTRACT NO. 76830	
FED. ROAD DIST. NO. ILLINOIS FED. AID PROJECT					

DESIGNED - KRG
CHECKED - MJK
DRAWN - GSJ
CHECKED - MJK

REV. MID-AMERICA ENGINEERING SERVICES