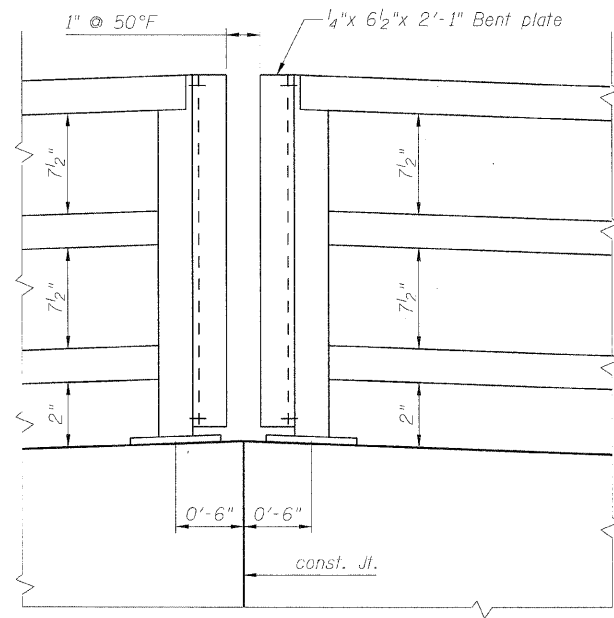
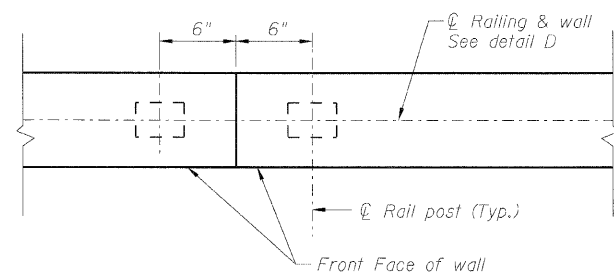


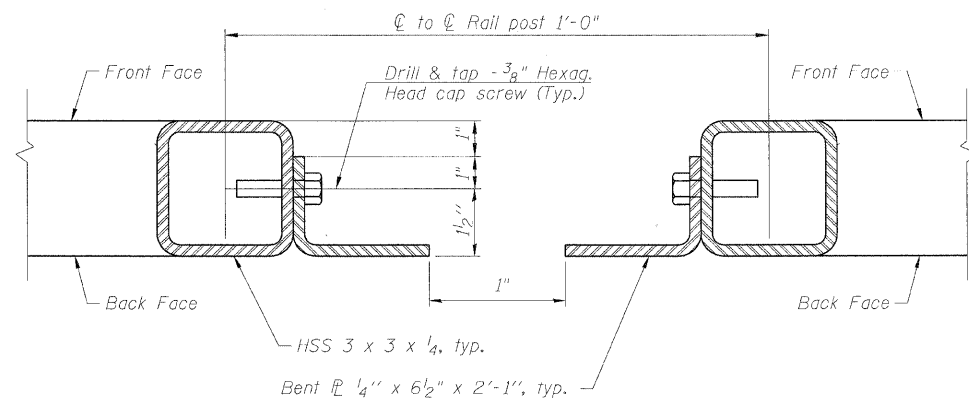
STATE OF ILLINOIS
DEPARTMENT OF TRANSPORTATION



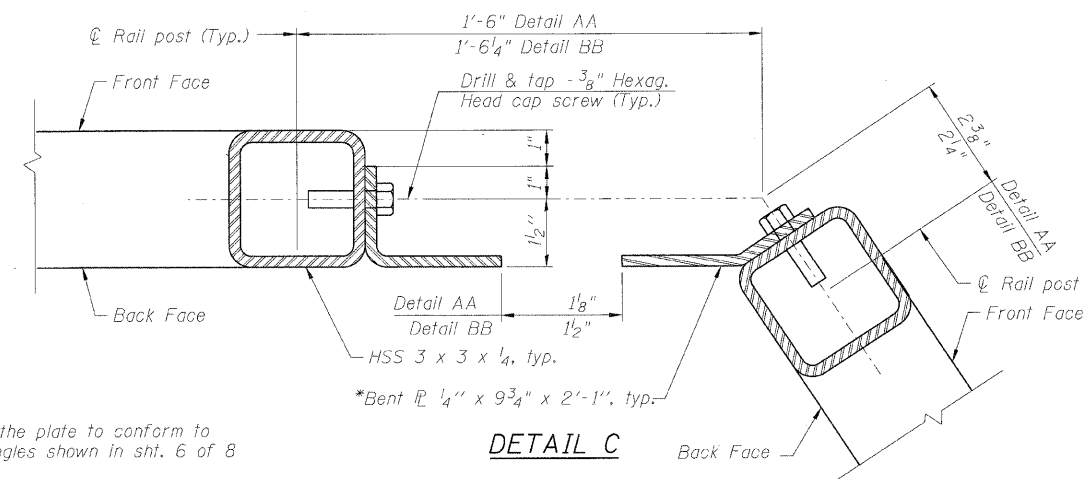
ELEVATION



PLAN
DETAIL CC

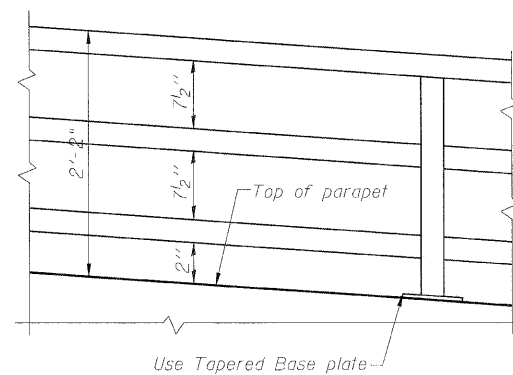


DETAIL D

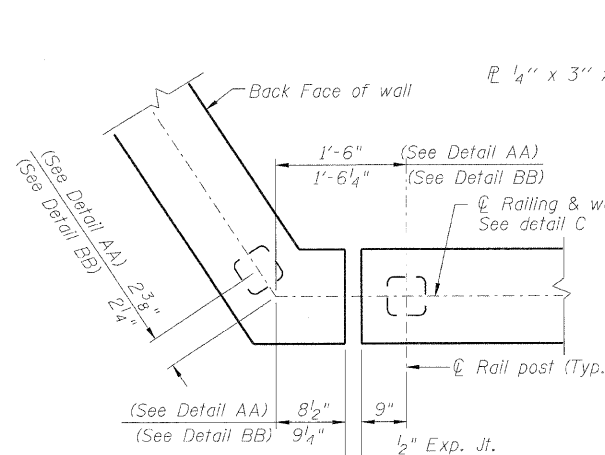


DETAIL C

*Bend the plate to conform to the angles shown in sht. 6 of 8

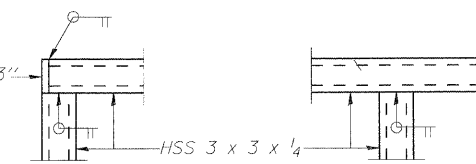


PARAPET RAILING ELEVATION
(Inclined top of wall)



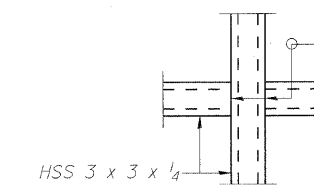
PLAN

Wall corner configuration Details AA & BB

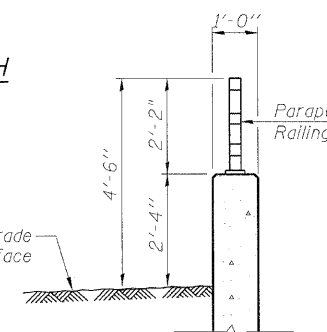


DETAIL A

DETAIL B

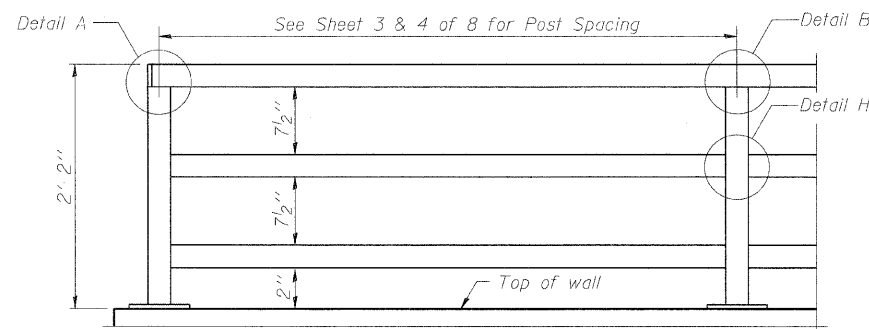


DETAIL H

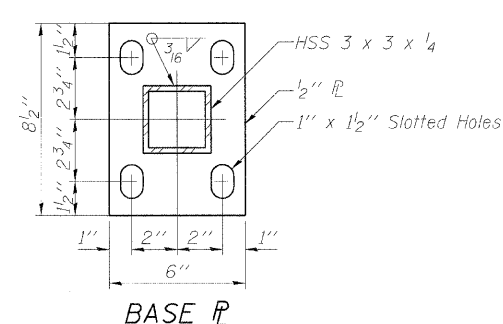


SECTION THRU PARAPET

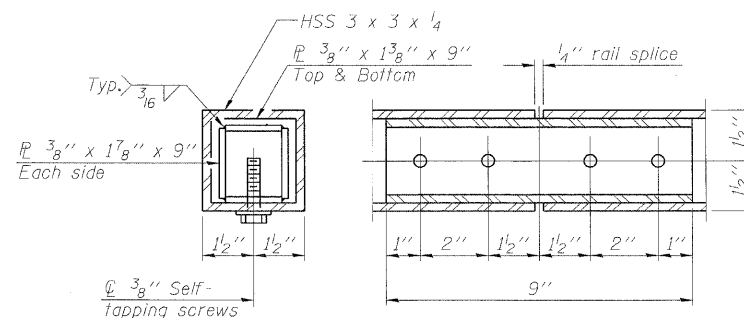
Note: Fabricate Railing on top of wall panels P&R to 282'-4 1/2" Radius



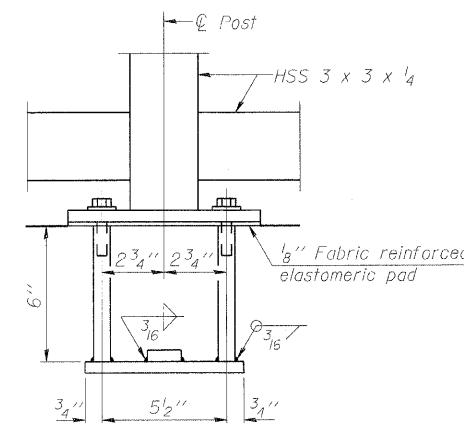
PARAPET RAILING ELEVATION
(Inside Face of Three Element Rail)



BASE P

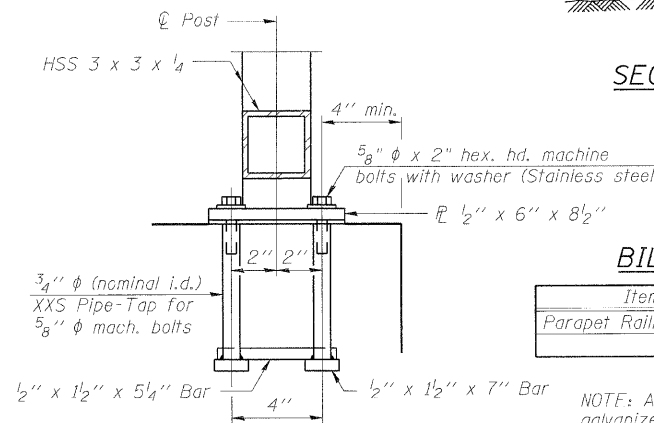


RAIL SPLICE



ANCHOR BOLT DETAILS

In lieu of the cast-in-place anchor device shown, the Contractor has the option of drilling and setting 5/8" diameter anchor rods according to Article 509.06 of the Standard Specifications. Embedment shall be according to the manufacturer's specifications.



BILL OF MATERIAL

Item	Unit	Quantity
Parapet Railing	Foot	86

NOTE: All steel railing elements shall be galvanized according to article 509.05 of the Standard Specifications.

HHCS designates Hexagonal head cap screws
HHS designates hollow structural section.

DESIGNED - KRG
CHECKED - MJK
DRAWN - GSJ
CHECKED - MJK

PARAPET RAILING

SHEET NO. 7	F.A.P. RTE.	SECTION	COUNTY	TOTAL SHEETS	SHEET NO.
8 SHEETS	600	60-(30,31,128)-1	Madison	399	278
RETAINING WALL 3			CONTRACT NO. 76830		
FED. ROAD DIST. NO. - ILLINOIS FED. AID PROJECT					

MID-AMERICA ENGINEERING SERVICES