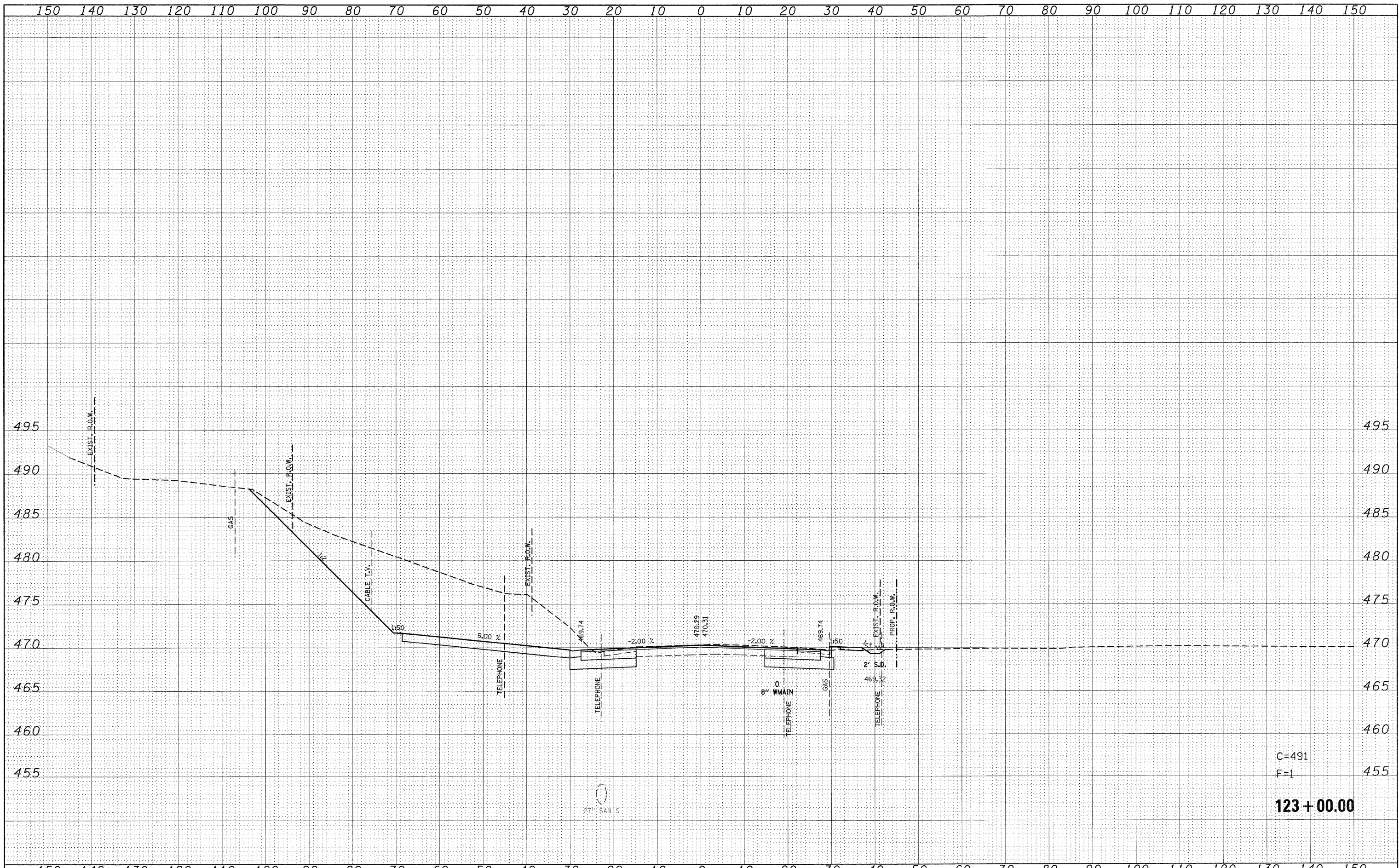


FINAL SURVEY	DATE
SURVEYED	
NOTE BOOK	
NO.	
TEMPLATE	
AREAS CHECKED	

ORIGINAL SURVEY	DATE
SURVEYED	
NOTE BOOK	
NO.	
TEMPLATE	
AREAS CHECKED	



C=491  
 F=1  
**123 + 00.00**

FILE NAME = p:\projects\513501\cadd\dgn\d876830-sht-159.dgn	USER NAME = default	DESIGNED -	REVISED -	<b>STATE OF ILLINOIS DEPARTMENT OF TRANSPORTATION</b>	<b>IL ROUTE 159 MAINLINE CROSS SECTIONS</b>		F.A.P. RTE. 600	SECTION 60-(30,31,128)-1	COUNTY ST. CLAIR/MADISON	TOTAL SHEETS 399	SHEET NO. 306
PLOT SCALE = 10.0000' / IN.	PLOT DATE = 8/24/2009	DRAWN -	REVISED -		SCALE:	SHEET NO. 27 OF 120 SHEETS	STA. 123+00.00 TO STA. 123+00.00	CONTRACT NO. 76830		ILLINOIS FED. AID PROJECT	
		CHECKED -	REVISED -								
		DATE -	REVISED -								