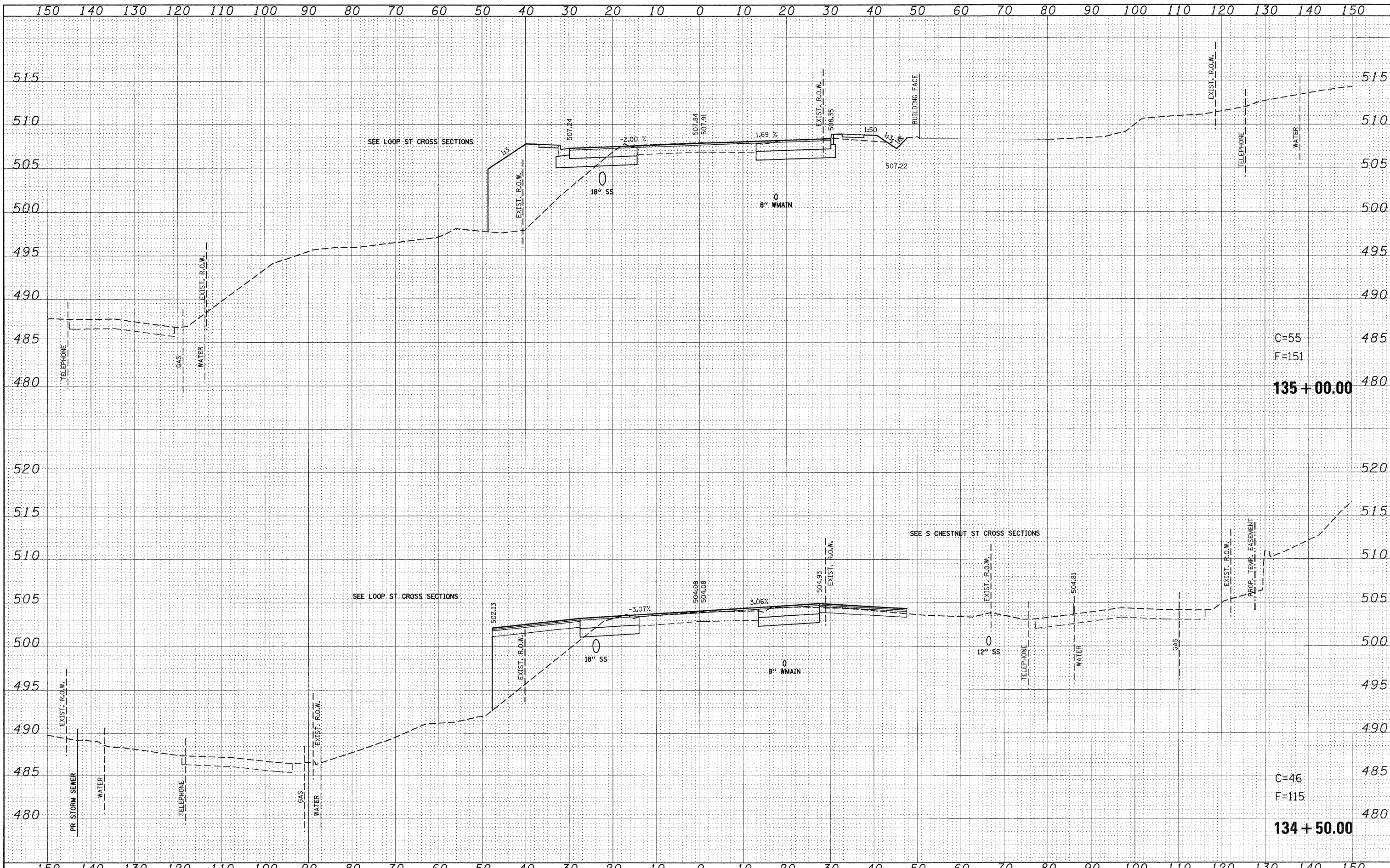


FINAL SURVEY	DATE
SURVEYED	BY
NOTE BOOK	NO.
TEMPLATE	AREAS CHECKED

ORIGINAL SURVEY	DATE
SURVEYED	BY
NOTE BOOK	NO.
TEMPLATE	AREAS CHECKED



FILE NAME =	USER NAME = default	DESIGNED -	REVISED -	STATE OF ILLINOIS DEPARTMENT OF TRANSPORTATION	IL ROUTE 159 MAINLINE CROSS SECTIONS		F.A.P. RTE.	SECTION	COUNTY	TOTAL SHEETS	SHEET NO.
ps\proj\cta\513591\cadd\dgn\0876830-shr-ssht-1159.dgn		DRAWN -	REVISED -		600	60-(30,31,128)-1	ST. CLAIR/MADISON	399	320		
PLOT SCALE = 10,0000 ' / IN.		CHECKED -	REVISED -		CONTRACT NO. 76830						
PLOT DATE = 8/24/2009		DATE -	REVISED -		ILLINOIS FED. AID PROJECT						
				SCALE:		SHEET NO. 41 OF 120 SHEETS		STA. 134+50.00 TO STA. 135+00.00			