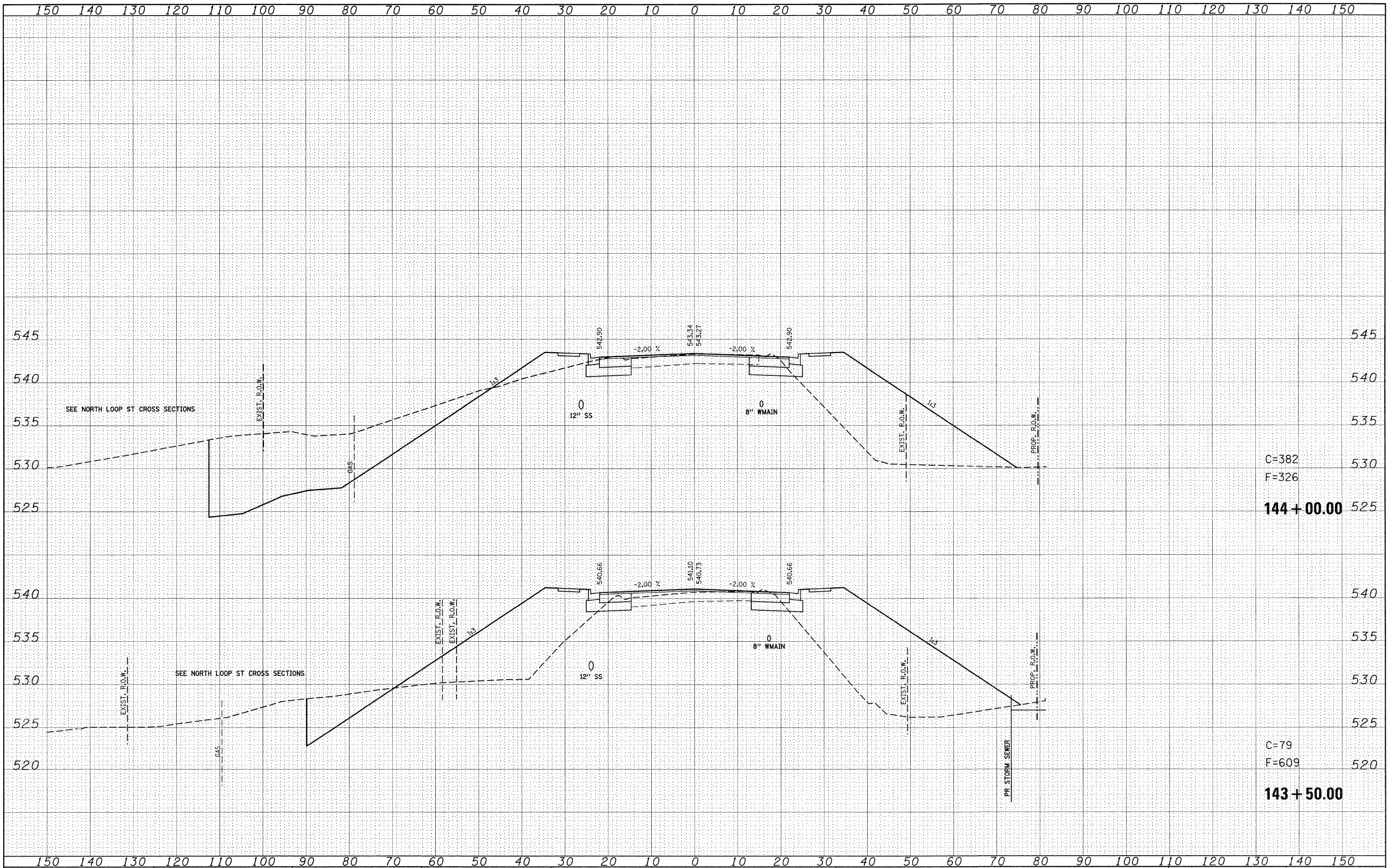


FINAL SURVEY NO.	DATE
SURVEYED BY	
TEMPLATE	
NOTE BOOK	
AREAS CHECKED	

ORIGINAL SURVEY NO.	DATE
SURVEYED BY	
TEMPLATE	
NOTE BOOK	
AREAS CHECKED	



C=382
F=326
144 + 00.00

C=79
F=609
143 + 50.00

FILE NAME = p:\projects\1513501\cadd\dgn\d876830-sht-vssht-1.dgn

USER NAME = default
PLOT SCALE = 10,0000' / IN.
PLOT DATE = 8/24/2009

DESIGNED -
DRAWN -
CHECKED -
DATE -

REVISED -
REVISED -
REVISED -
REVISED -

**STATE OF ILLINOIS
DEPARTMENT OF TRANSPORTATION**

**IL ROUTE 159
MAINLINE CROSS SECTIONS**

SCALE: SHEET NO. 54 OF 120 SHEETS STA. 143+50.00 TO STA. 144+00.00

F.A.P. RTE.	SECTION	COUNTY	TOTAL SHEETS	SHEET NO.
600	60-(30,31,128)-1	ST. CLAIR/MADISON	399	333
CONTRACT NO. 76830			ILLINOIS FED. AID PROJECT	