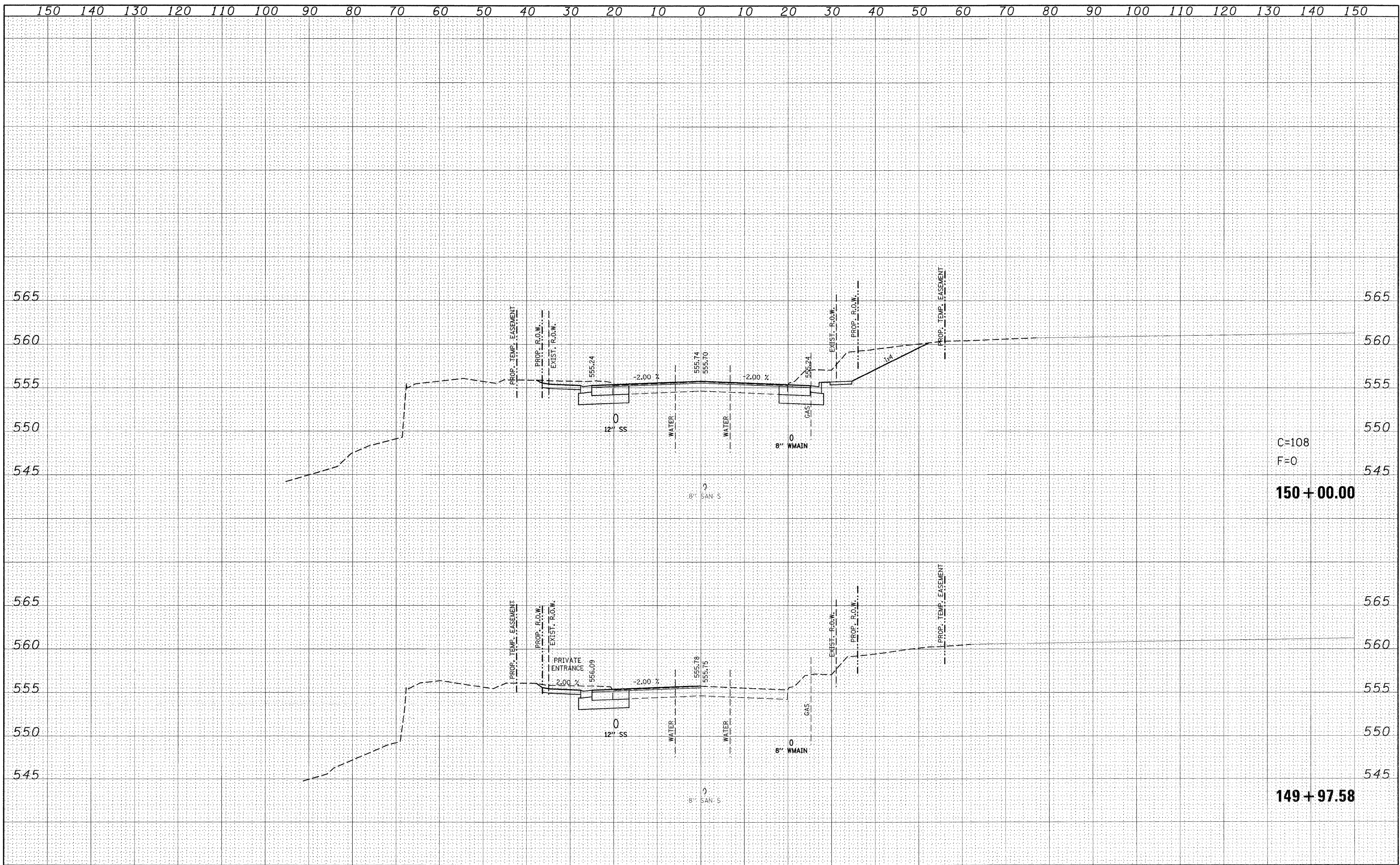


FINAL SURVEY	DATE
NOTED	BY
PLANNED	
TEMPLATE	
AREAS	
CHECKED	

ORIGINAL SURVEY	DATE
NOTED	BY
PLANNED	
TEMPLATE	
AREAS	
CHECKED	



FILE NAME = P:\Projects\151350\1\CADD\DGN\14876830-shht-ssht-1	USER NAME = default	DESIGNED -	REVISED -	<b>STATE OF ILLINOIS</b> <b>DEPARTMENT OF TRANSPORTATION</b>	<b>IL ROUTE 159</b> <b>MAINLINE CROSS SECTIONS</b>		F.A.P. RTE. 600	SECTION 60-(30,31,128)-1	COUNTY ST. CLAIR/MADISON	TOTAL SHEETS 399	SHEET NO. 343
PLOT SCALE = 10.0000' / IN.	PLOT DATE = 8/24/2009	DRAWN -	REVISED -		SCALE:	SHEET NO. 64 OF 120 SHEETS	STA. 149+97.58 TO STA. 150+00.00	CONTRACT NO. 76830		ILLINOIS FED. AID PROJECT	
		CHECKED -	REVISED -								
		DATE -	REVISED -								