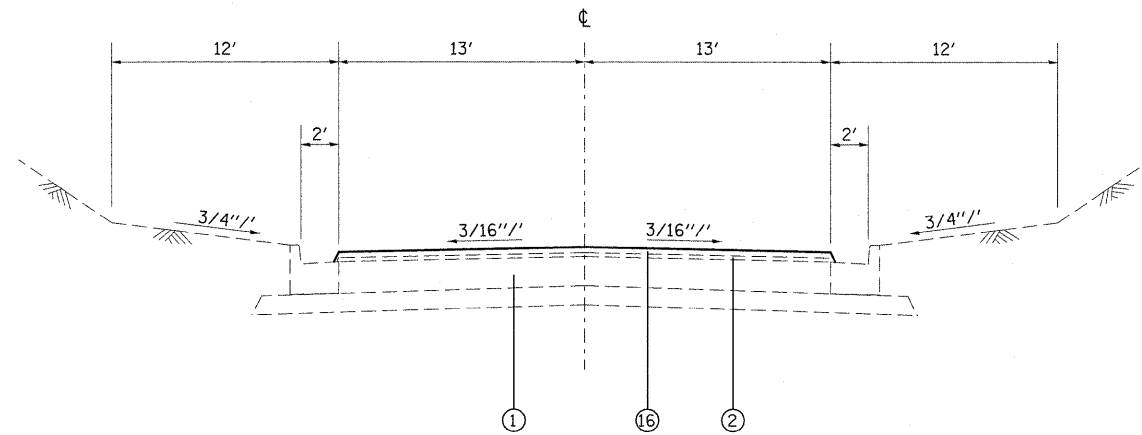
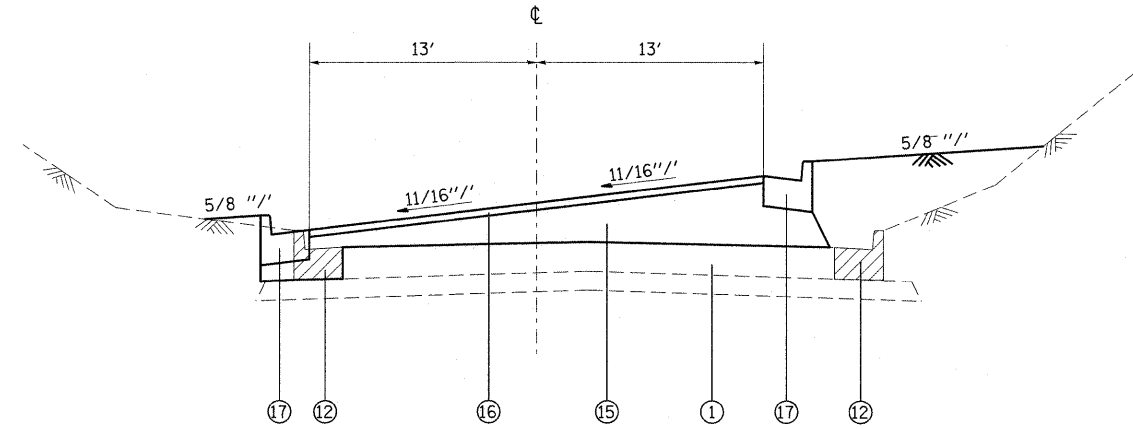


STATION EQUATION

STA. 98+00 = 1257+81.24
 STA. 110+00 = 1245+84.21



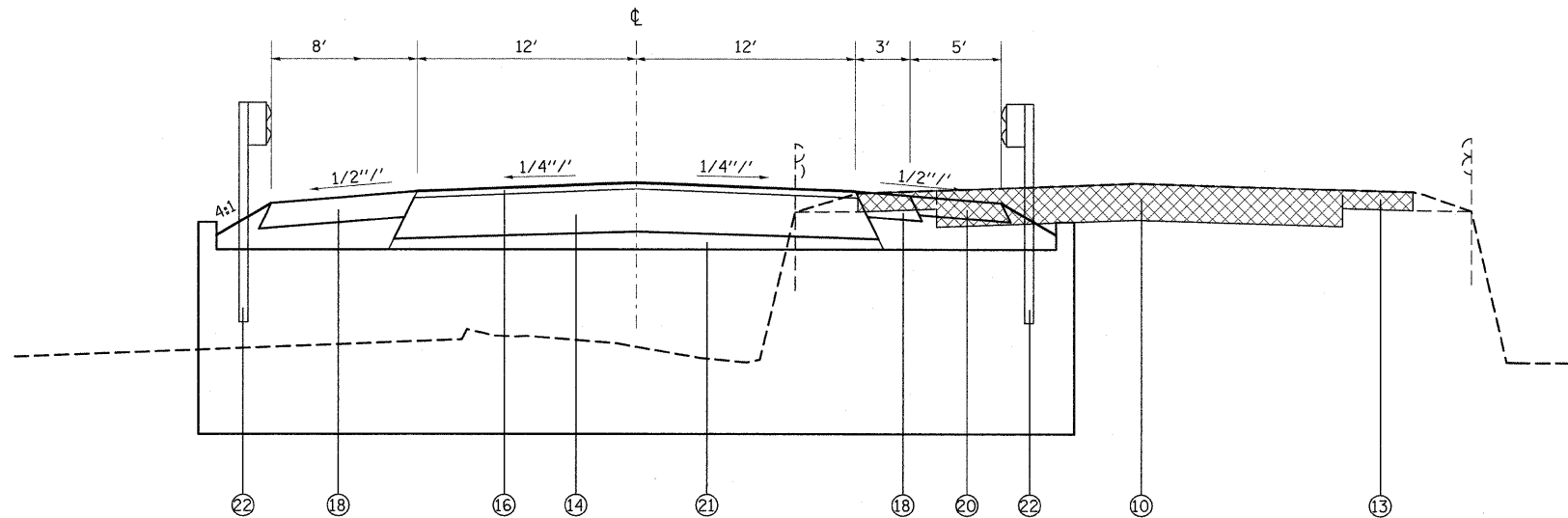
TANGENT SECTION
 STA. 98+00.00 TO STA. 99+43.83



SUPERELEVATED SECTION
 STA. 100+41 TO STA. 100+65

LEGEND

- ① EXISTING PCC PAVEMENT - 9 1/4"
- ② EXISTING BITUMINOUS PAVEMENT - VARIES 2" TO 6"
- ③ EXISTING HMA RESURFACING - ±10"
- ④ EXISTING BASE COURSE WIDENING - 9"
- ⑤ EXISTING HOT-MIX ASPHALT SHOULDERS - ±9"
- ⑥ EXISTING AGGREGATE SHOULDER - 6"
- ⑦ EXISTING COMBINATION CURB AND GUTTER, TYPE B-6.24
- ⑧ EXISTING COMBINATION CURB AND GUTTER, TYPE B-6.24 (WITH 2' EXTENDED FLAG)
- ⑨ EXISTING SUB-BASE GRANULAR MATERIAL, TYPE A - 6"
- ⑩ PROPOSED HOT-MIX ASPHALT PAVEMENT REMOVAL (FULL-DEPTH)
- ⑪ PROPOSED HOT-MIX ASPHALT SURFACE REMOVAL - 1 1/2"
- ⑫ PROPOSED COMBINATION CURB AND GUTTER REMOVAL - TYPE B-6.24
- ⑬ PROPOSED PAVED SHOULDER REMOVAL
- ⑭ PROPOSED HOT-MIX ASPHALT BINDER COURSE- 14"
- ⑮ PROPOSED HOT-MIX ASPHALT BINDER COURSE- VARIABLE DEPTH
- ⑯ PROPOSED HOT-MIX ASPHALT SURFACE COURSE - 2"
- ⑰ PROPOSED COMBINATION CURB AND GUTTER, TYPE B-6.24
- ⑱ PROPOSED HOT-MIX ASPHALT SHOULDERS - 9 1/2"
- ⑲ PROPOSED HOT-MIX ASPHALT SHOULDERS - VARIABLE DEPTH
- ⑳ PROPOSED AGGREGATE SHOULDERS
- ㉑ PROPOSED LIME MODIFIED SOIL
- ㉒ PROPOSED GUARDRAIL



TANGENT SECTION
 STA. 104+11.25 TO STA. 104+22.28

MIXTURE USE	SURFACE	BINDER	SHOULDERS
AC/PG	PG 64-22	PG 64-22	PG 64-22
RAP % (MAX)	10%	15%	30%
DESIGN AIR VOIDS	4.0% @ Ndes=70	4.0% @ Ndes=70	2.0% @ Ndes=30
MIX COMPOSITION (GRADATION MIXTURE)		IL 19.0	
FRICTION AGG	MIXTURE "D"	MIXTURE "B"	BAM

** TOP LIFT SHOULDERS - DESIGN THIS MIX AT 2.0% VOIDS AND ADD ASPHALT TO REDUCE VOIDS TO 1.5%.

PLAN QUANTITIES FOR BITUMINOUS CONCRETE SURFACE COURSE ITEMS ARE CALCULATED USING A UNIT WEIGHT OF 112 LB/SQ YD/IN (59.8 KG/SQ M/25 MM THICKNESS).

STRUCTURAL DESIGN TRAFFIC: Year 2020
 PV = 8900 SU = 381 MU = 499
 ROAD/STREET CLASSIFICATION: Class II
 PERCENT OF STRUCTURAL DESIGN TRAFFIC IN DESIGN LANE:
 P = 91.0% S = 3.9% M = 5.1%
 TRAFFIC FACTOR: Actual TF = 2.36 AC Type = 20
 Minimum TF = 3.81
 PG GRADE: Binder = PG 64-22 Surface = PG 64-22
 SUBGRADE SUPPORT RATING: SSR = POOR

FILE NAME =	USER NAME = harbaughrd	DESIGNED -	REVISED -	STATE OF ILLINOIS DEPARTMENT OF TRANSPORTATION	PROPOSED TYPICAL SECTIONS				F.A.P. RTE.	SECTION	COUNTY	TOTAL SHEETS	SHEET NO.
ct:\pwork\PWIDOT\HARBAUGH\RD\dms52290\1n03007.dgn		DRAWN -	REVISED -		327	15B-1	MARION	58	5				
PLOT SCALE = 50.0000' / IN.		CHECKED -	REVISED -		CONTRACT NO. 76A59				ILLINOIS FED. AID PROJECT				
PLOT DATE = 12/18/2009		DATE -	REVISED -		SCALE:	SHEET NO. 2 OF 3 SHEETS	STA.	TO STA.					