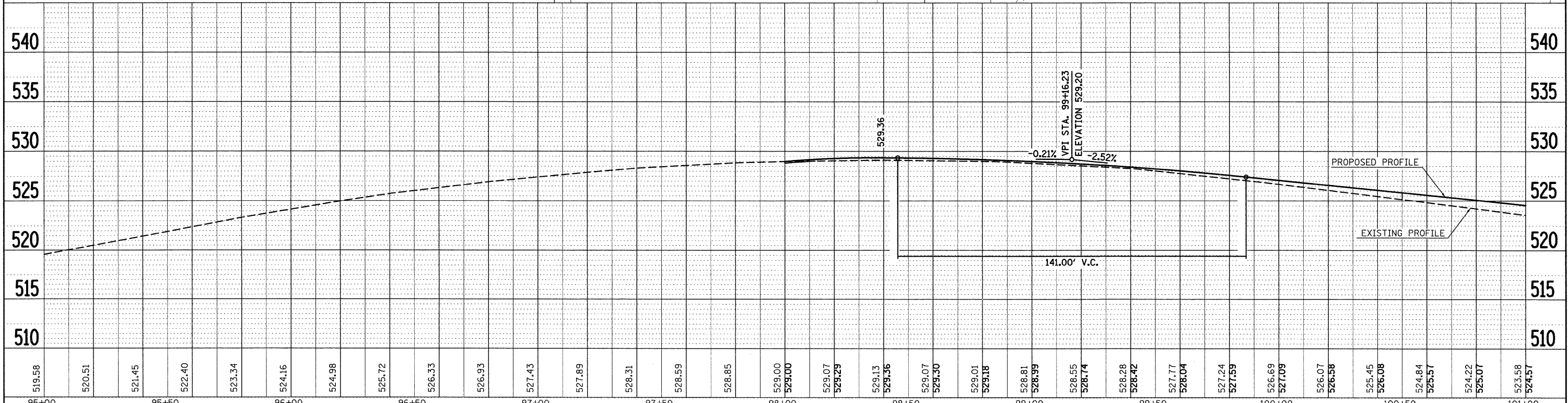
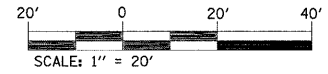
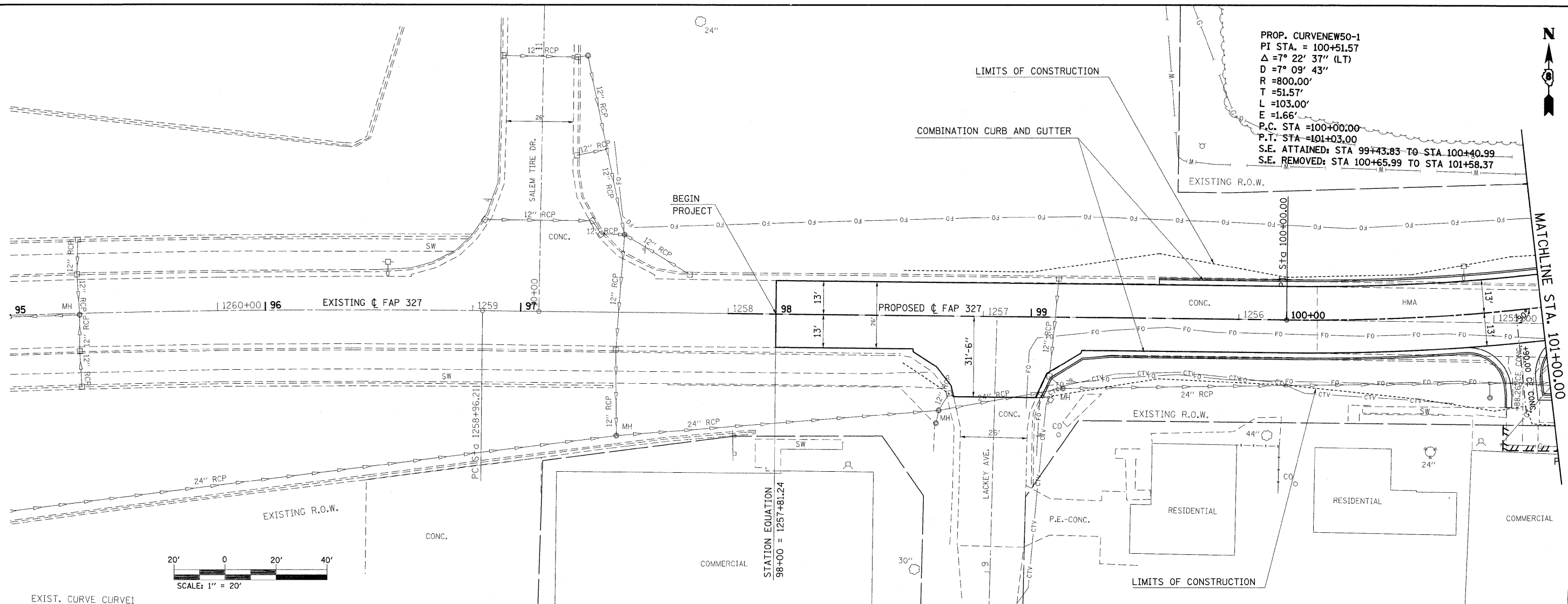


DATE: \_\_\_\_\_ BY: \_\_\_\_\_  
 SURVEYED \_\_\_\_\_  
 ALIGNMENT CHECKED \_\_\_\_\_  
 RT. OF WAY CHECKED \_\_\_\_\_  
 NOTE BOOK NO. \_\_\_\_\_  
 CADD FILE NAME \_\_\_\_\_

DATE: \_\_\_\_\_ BY: \_\_\_\_\_  
 SURVEYED \_\_\_\_\_  
 GRADES CHECKED \_\_\_\_\_  
 S.M. NOTED \_\_\_\_\_  
 STRUCTURE NOTATIONS CHRD \_\_\_\_\_  
 NOTE BOOK NO. \_\_\_\_\_

PROP. CURVENEW50-1  
 PI STA. = 100+51.57  
 $\Delta = 7^\circ 22' 37''$  (LT)  
 $D = 7^\circ 09' 43''$   
 $R = 800.00'$   
 $T = 51.57'$   
 $L = 103.00'$   
 $E = 1.66'$   
 P.C. STA = 100+00.00  
 P.T. STA = 101+03.00  
 S.E. ATTAINED: STA 99+43.83 TO STA 100+40.99  
 S.E. REMOVED: STA 100+65.99 TO STA 101+58.37



519.58	520.51	521.45	522.40	523.34	524.16	524.98	525.72	526.33	526.93	527.43	527.89	528.31	528.59	528.85	529.00	529.00	529.07	529.29	529.13	529.36	529.07	529.30	529.01	529.18	528.81	528.99	528.55	528.74	528.28	528.42	527.77	528.04	527.24	527.59	526.69	527.09	526.07	526.58	525.45	526.08	524.84	525.57	524.22	525.07	523.58	524.57
95+00	95+50	96+00	96+50	97+00	97+50	98+00	98+50	99+00	99+50	100+00	100+50	101+00																																		

STATE OF ILLINOIS  
 DEPARTMENT OF TRANSPORTATION

US 50 PLAN AND PROFILE SHEET

F.A.P. RTE.	SECTION	COUNTY	TOTAL SHEETS	SHEET NO.
327	15B-1	MARION	58	12
CONTRACT NO. 76A59			ILLINOIS FED. AID PROJECT	

SCALE: 20 SHEET NO. 1 OF 3 SHEETS STA. TO STA.