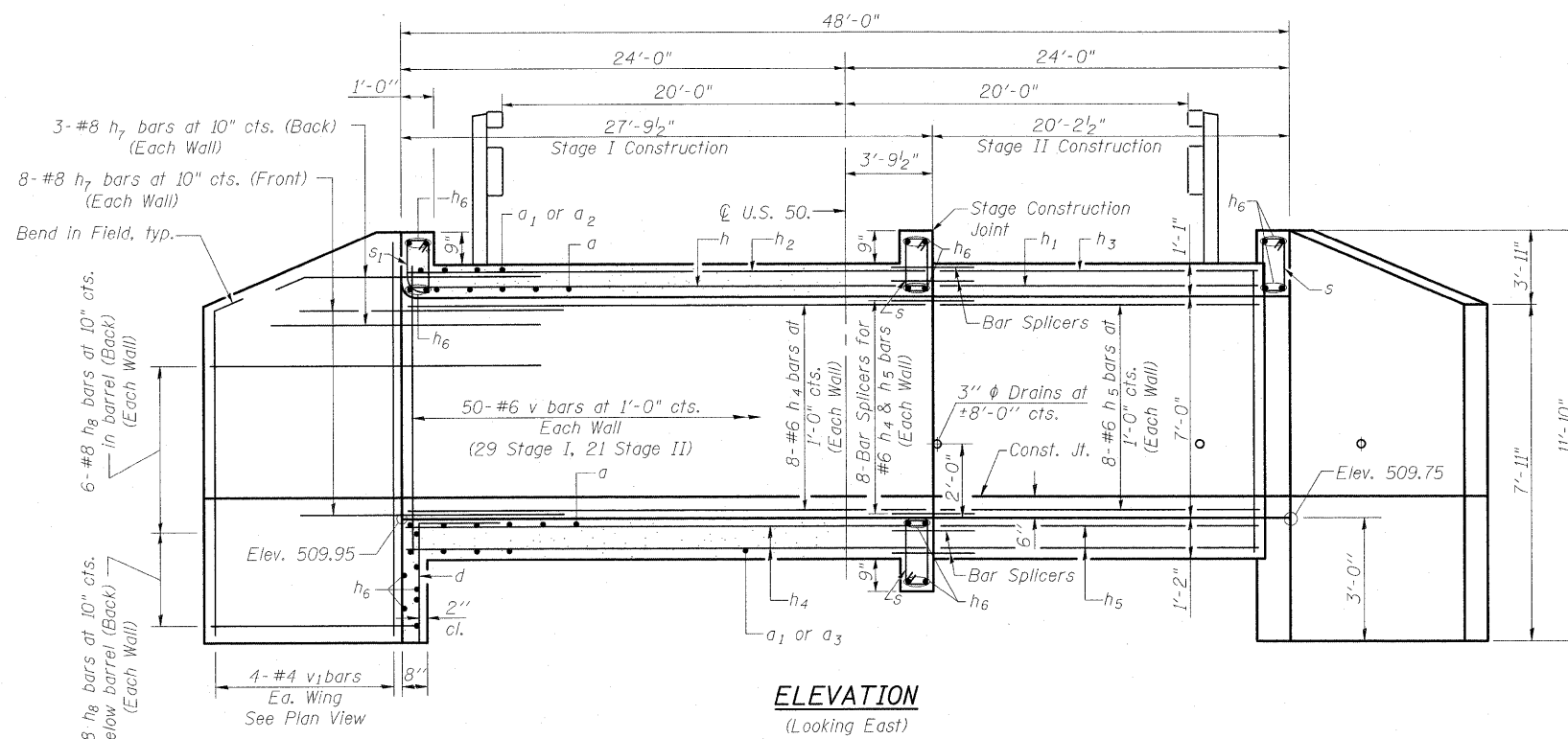
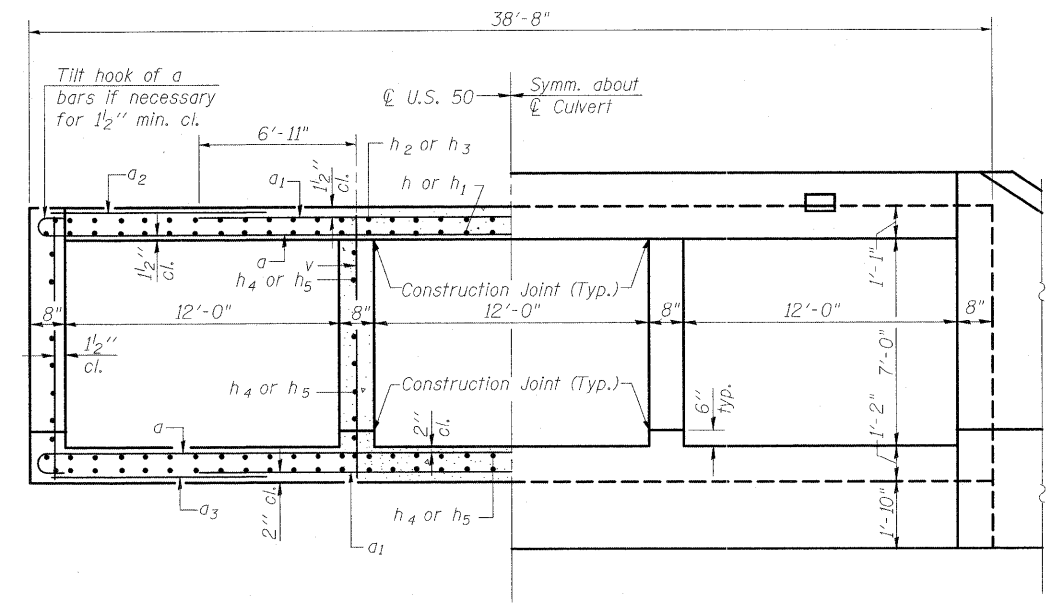


STATE OF ILLINOIS  
DEPARTMENT OF TRANSPORTATION

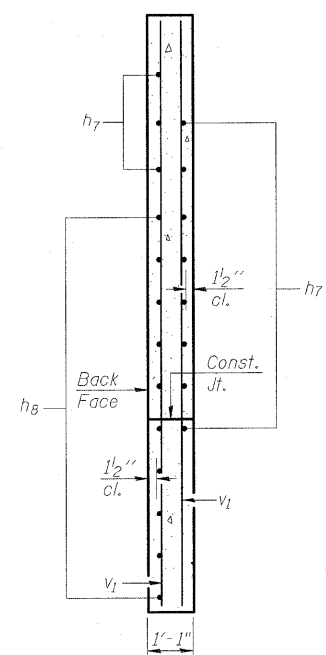


**ELEVATION**  
(Looking East)

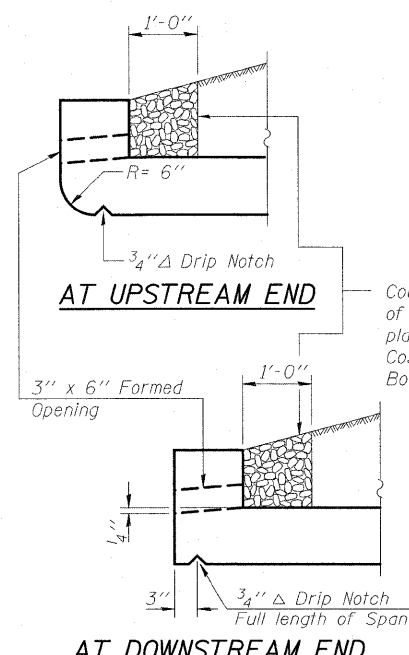


**HALF SECTION  
THRU BARREL**

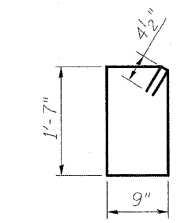
**HALF END ELEVATION**



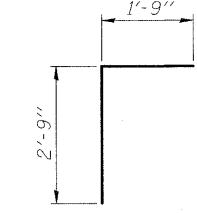
**SECTION A-A**



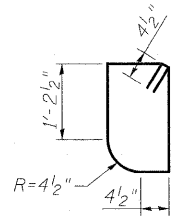
**DRAIN DETAIL**



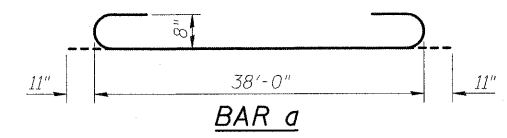
**BAR s**



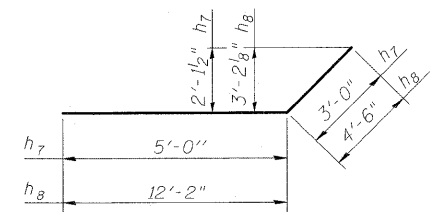
**BAR d**



**BAR s1**



**BAR a**



**BARS h7 & h8**

**BILL OF MATERIAL**

Bar	No.	Size	Length	Shape
a	114	#8	40'-2"	U
a1	104	#8	26'-6"	—
a2	66	#5	9'-11"	—
a3	52	#4	9'-11"	—
d	80	#4	4'-6"	L
h	43	#7	27'-6"	—
h1	43	#7	19'-11"	—
h2	39	#4	27'-6"	—
h3	39	#4	19'-11"	—
h4	110	#6	27'-6"	—
h5	110	#6	19'-11"	—
h6	22	#6	38'-5"	—
h7	44	#8	8'-0"	—
h8	40	#8	16'-8"	—
s	120	#4	5'-5"	□
s1	40	#4	5'-3"	□
v	204	#6	8'-11"	—
v1	16	#4	11'-7"	—
Concrete Box Culverts			Cu. Yd.	215.1
Reinforcement Bars			Pound	41510

**CULVERT DETAILS  
U.S. 50 OVER LACKEY CREEK  
STRUCTURE NO. 061-2026**

DESIGNED	A.C.S.
CHECKED	B.B.
DRAWN	W.J.S.
CHECKED	C.J.F.

Notes: A distance of half the length of the wingwall but not less than six feet of the barrel shall be poured monolithically with the wingwalls.

**BERNARDIN  
LOCHMUELLER &  
ASSOCIATES, INC.**

3 Oak Drive  
Maryville, IL 62052-5655  
Local: 618-288-4665  
Fax: 618-288-4666

SHEET NO. 5 9 SHEETS	F.A.P. RTE. 327	SECTION 15B-1	COUNTY MARION	TOTAL SHEETS 58	SHEET NO. 37
	SN 061-2026		CONTRACT NO. 76A59		
FED. ROAD DIST. NO. 8 ILLINOIS FED. AID PROJECT 327					