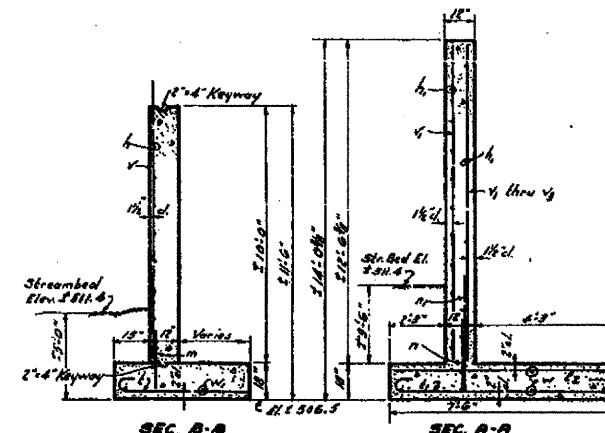
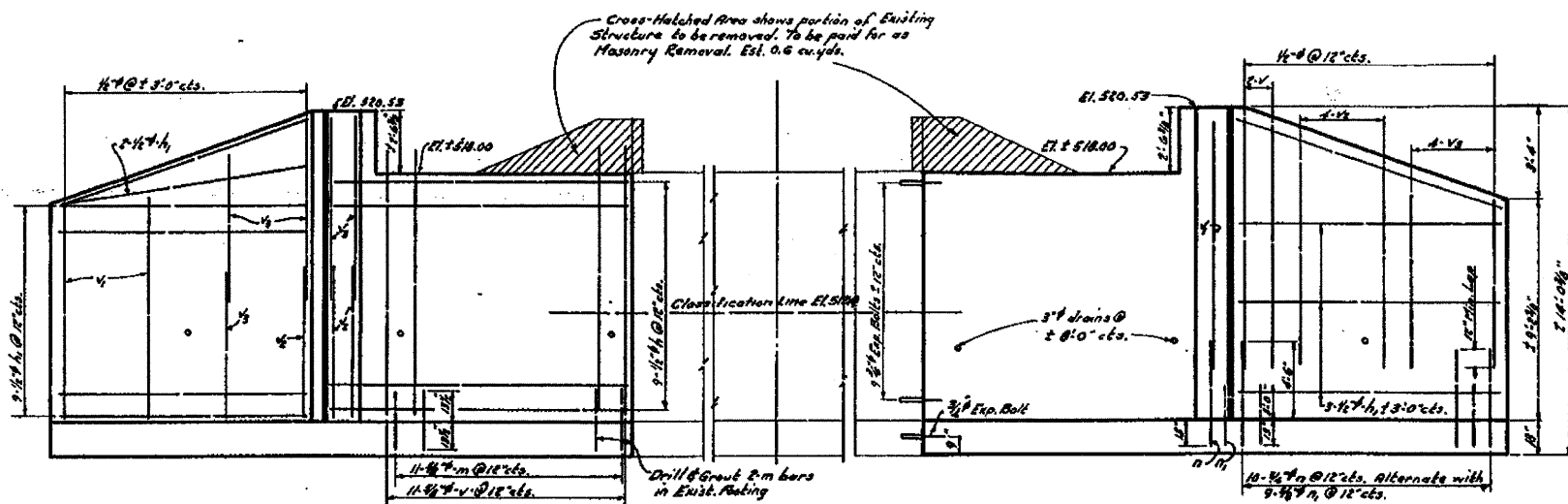


STATE OF ILLINOIS
DEPARTMENT OF PUBLIC WORKS & BUILDINGS
DIVISION OF HIGHWAYS

BOOK NO.	SECTION	COUNTY	TOTAL SHEETS	SHEET NO.
18	15BY	MARION	8	7
SHEETS				

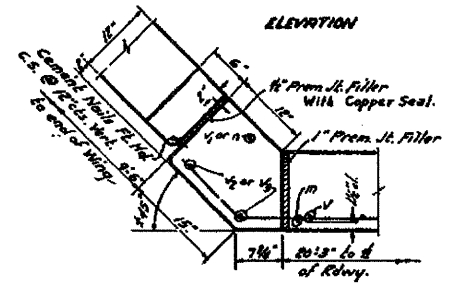


SHOWING REPAIRS IN FRONT FACE

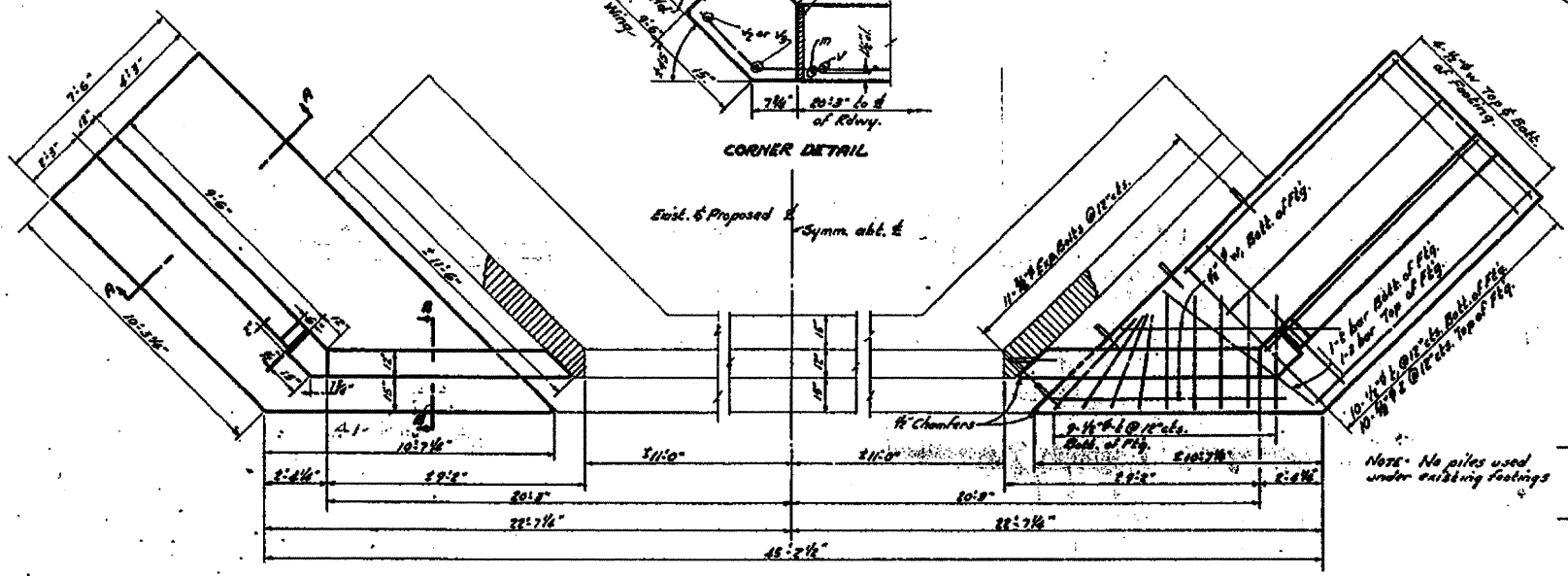
ELEVATION

Note - New footings to be at same elevations as exist. footings.

SHOWING REPAIRS IN BACK FACE

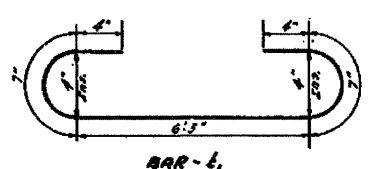


CORNER DETAIL

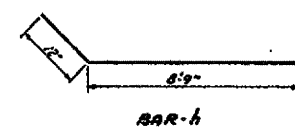


PLAN

Note - Vertical dimensions shall be the difference between elev. shown for the top of Proposed Abut. & Elev. @ Top of Exist. Flgs.



BAR-1



BAR-h

ALL OF MATERIAL - SUBSTR. QUANTITIES

Bar	Qty	Size	Length	Shape
v	11	4"	11'0"	
w	20	4"	6'6"	
x	20	"	7'6"	
y	32	"	6'0"	
h	26	1/2"	9'9"	
h	20	"	9'0"	
l	22	1/2"	2'0"	
l	44	"	2'9"	
z	44	1/2"	7'0"	
w	22	1/2"	10'6"	
y	0	"	6'0"	
m	44	1/2"	2'9"	
n	44	1/2"	2'9"	
n	40	1/2"	4'9"	

Class X Concrete Cu Yds. 58.0
Reinforcement Bars No. 800
Masonry Removal Cu Yds. 1.2
Expansion Bolts No. 09
Class A Excav. for Structures Cu Yds. 43
Class B Excav. for Structures Cu Yds. 17.0

COPPER SEAL DETAIL

Copper Seal shall be 16 oz controlled annealed copper with perforated flanges. Splices, if necessary, shall be soldered or brazed. Cost shall include in contract unit price for Class X Concrete.

DESIGNED: *Ralph H. ...*
CHECKED: *...*
DRAWN: *...*
CHECKED: *...*

EXAMINED: *...*
PASSED: *...*
APPROVED: *...*

Revised 3/15/51 - Added Classification Line and Class A & B Excavation for Structures R.H.C.

PROJ. 15-1524
S.A.T. 12
MARION CO.
STR. 1251+66

FILE NAME =	USER NAME = USERA	DESIGNED -	REVISIONS -	STATE OF ILLINOIS DEPARTMENT OF TRANSPORTATION	EXISTING STRUCTURE PLANS FOR INFORMATION ONLY	F.A.D. R.T.C.	SECTION	COUNTY	TOTAL SHEETS	SHEET NO.
#FILE#		DRAWN	REVISIONS			327	158-1	MARION	58	45
PLOT SCALE = #SCALE#		CHECKED	REVISIONS							CONTRACT NO. 76A55
PLOT DATE = #DATE#		DATE	REVISIONS							ILLINOIS FED. AID PROJECT