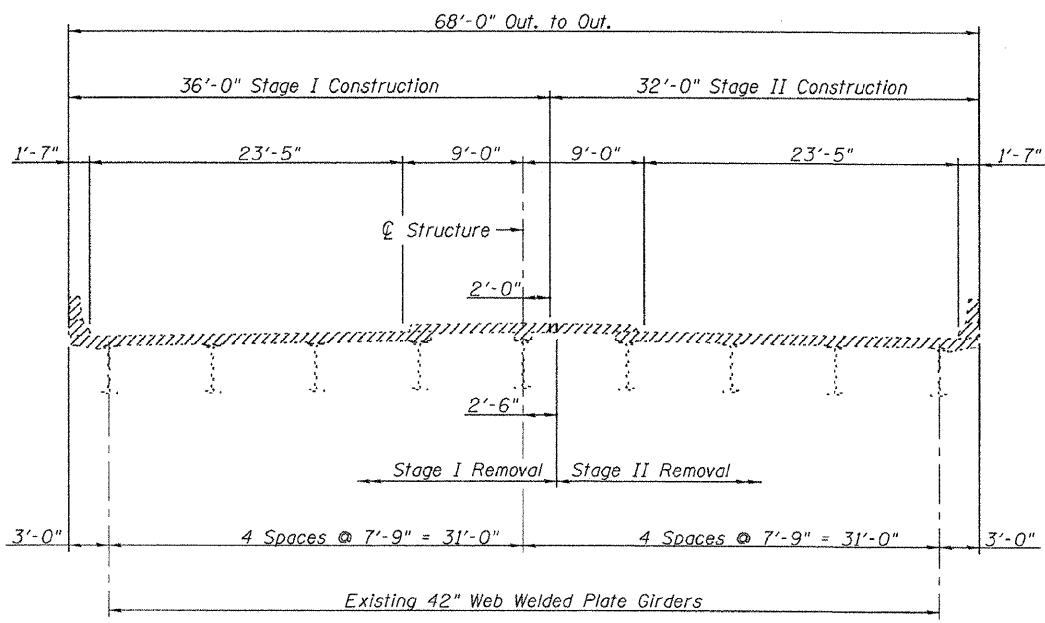
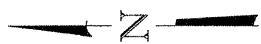
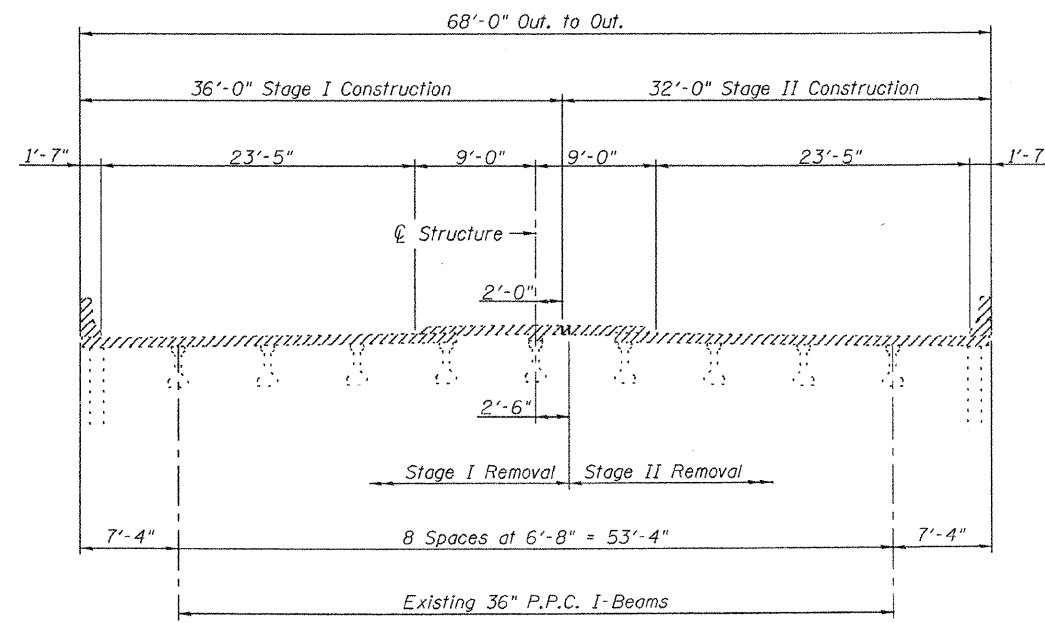


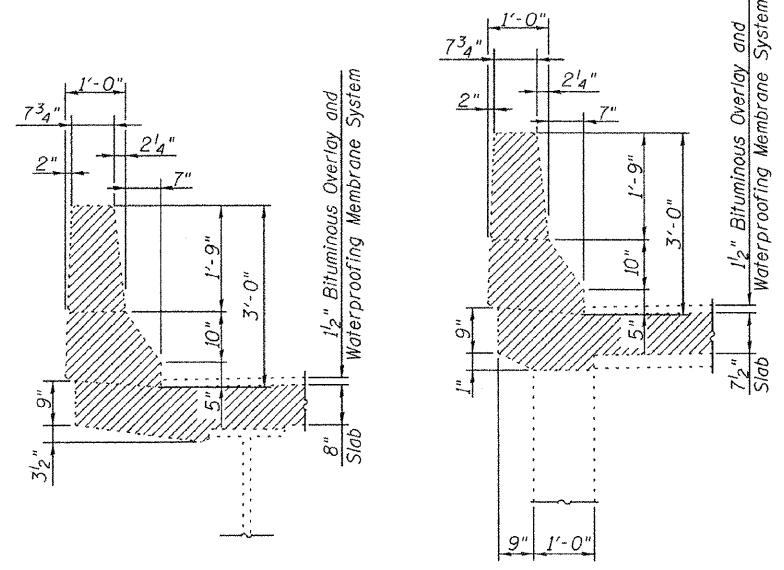
PLAN
(Showing Concrete Removal)



CROSS SECTION THRU SPAN AT END OF DECK
(Looking South)



CROSS SECTION THRU APPROACH SLAB AT DIAPHRAGM
(Looking South)



CURB SECTION MAIN SPANS
(Approach similar except watertable - See Detail A)

Notes:
 The Contractor shall use extreme care during concrete removal so as not to damage the PPC I-Beam.
 Hatched areas indicate "Concrete Removal".
 Existing Longitudinal and vertical reinforcement bars extending into the new construction shall be cleaned, straightened and incorporated into the new construction. Any reinforcement bars damaged during concrete removal shall be replaced with an approved bar splicer or anchorage system. Cost included with "Concrete Removal".
 The cost of removing and disposing of the existing expansion joints, including steel angles is included with "Concrete Removal".

Note:
 Staging is for information only and is to be coordinated with roadway staging.



Allen Henderson & Associates, Inc.
 Civil and Structural Engineers Springfield, IL
 62703 Phone: (217)544-8033 IL Design Firm
 No. 184-001907

SHEET NO. 5 14 SHEETS	F.A.P. RTE.	SECTION	COUNTY	TOTAL SHEETS	SHEET NO.
	690	14-12BR-1	CLINTON	72	25
CONTRACT NO. 76B27					
FED. ROAD DIST. NO. _ ILLINOIS FED. AID PROJECT					

SUPERSTRUCTURE CONCRETE REMOVAL
IL. ROUTE 160 OVER U.S. ROUTE 50
S.N. 014-0065