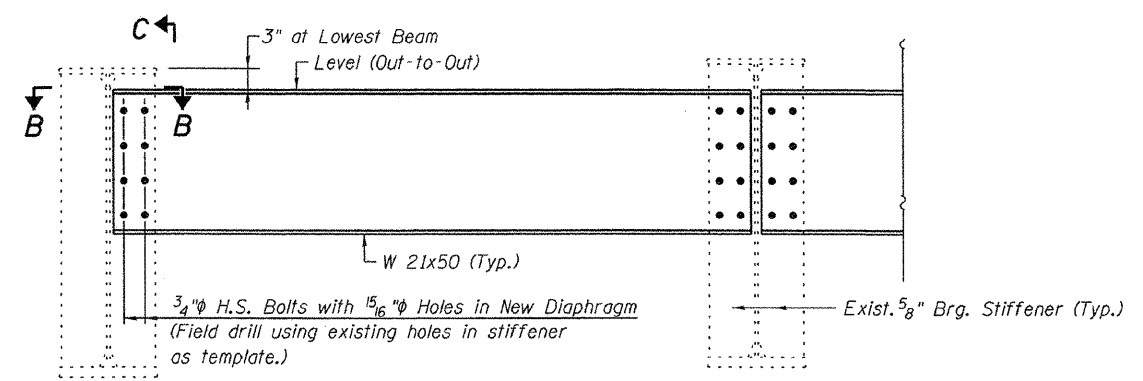


FRAMING PLAN

Diaphragm connection holes shall be $\frac{15}{16}$ " ϕ for $\frac{3}{4}$ " ϕ bolts. Two hardened washers shall be required at each diaphragm connection.

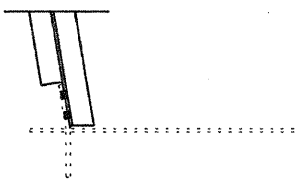
BILL OF MATERIAL

Item	Unit	Total
Furnishing and Erecting	Pound	4770
Structural Steel		
Structural Steel Removal	Pound	4770

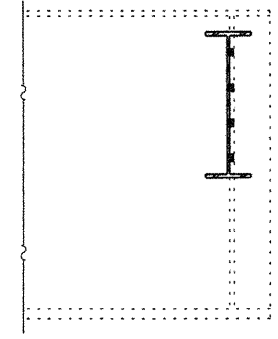


SECTION A-A

(Diaphragm 'D' - 12 Required)



SECTION B-B



SECTION C-C

**STRUCTURAL STEEL DETAILS
IL. ROUTE 160 OVER U.S. ROUTE 50
SN. 014-0065**



Allen Henderson & Associates, Inc.
Civil and Structural Engineers Springfield, IL.
62703 Phone: (217)544-8033 IL Design Firm
No. 184-001907

SHEET NO. 10
14 SHEETS

F.A.P. RTE.	SECTION	COUNTY	TOTAL SHEETS	SHEET NO.
690	14-12BR-1	CLINTON	72	30
CONTRACT NO. 76B27				
FED. ROAD DIST. NO. _ ILLINOIS FED. AID PROJECT				