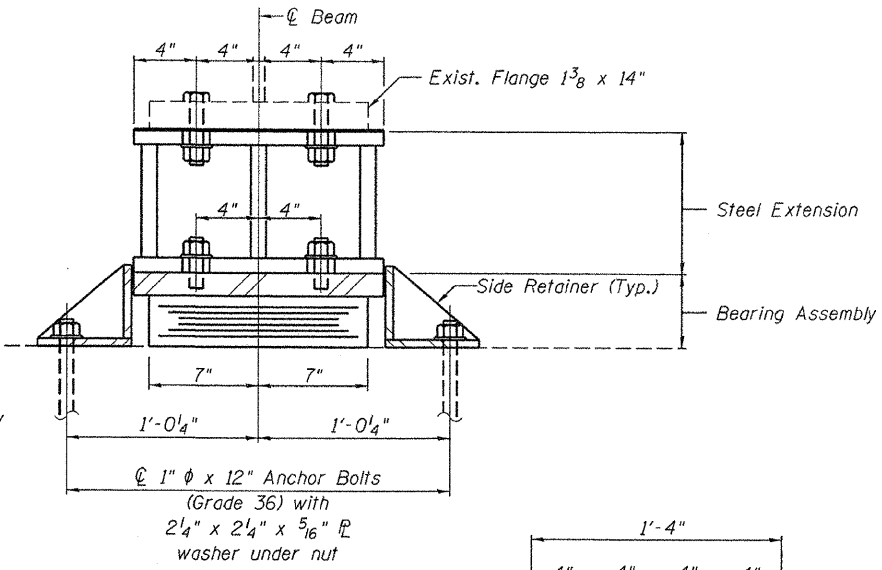
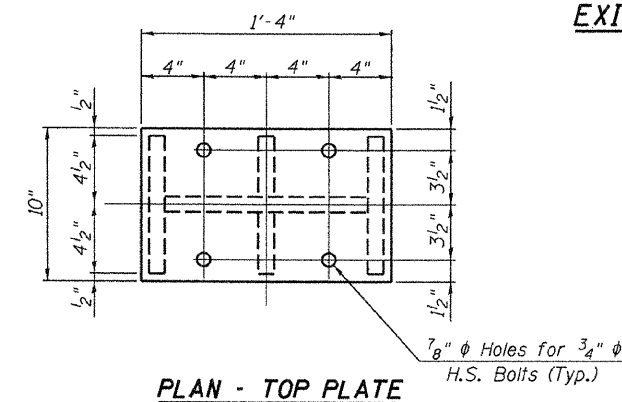


ELEVATION AT ABUTMENT

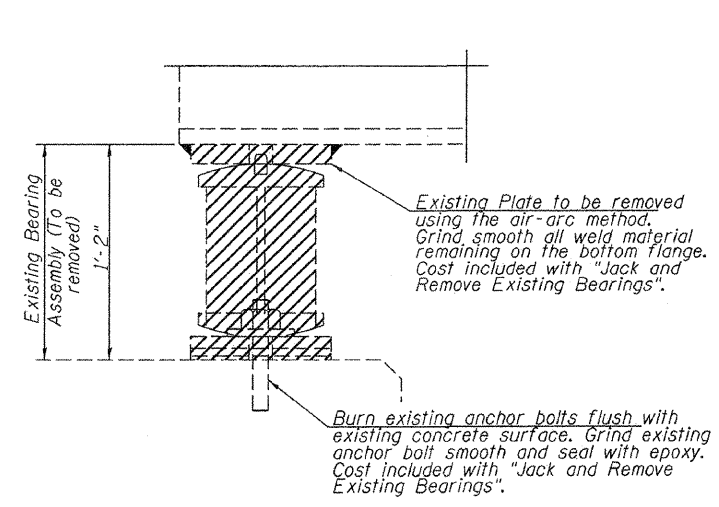
TYPE I ELASTOMERIC EXP. BRG.



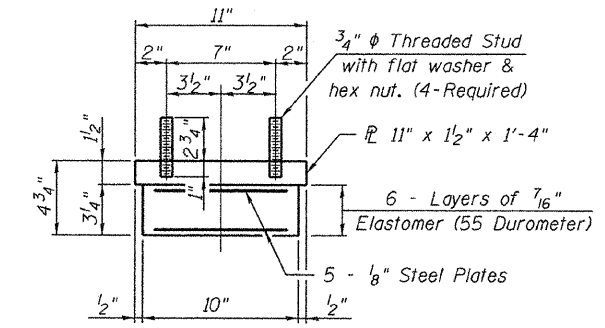
SECTION A-A



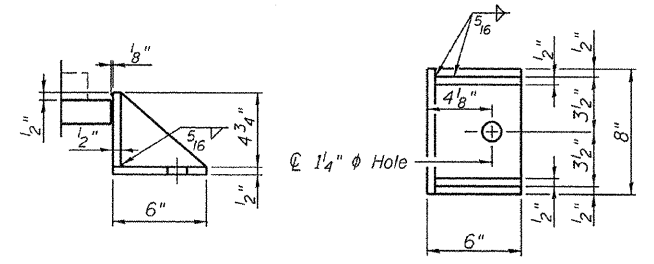
PLAN - TOP PLATE



EXISTING BEARING REMOVAL DETAIL

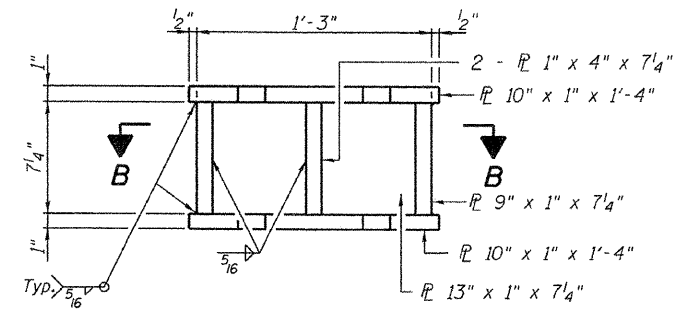


BEARING ASSEMBLY

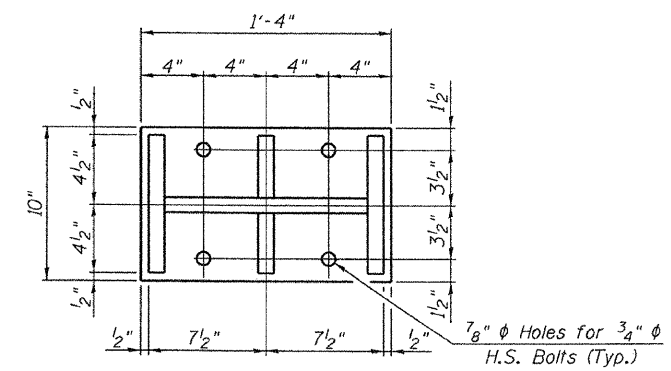


SIDE RETAINER

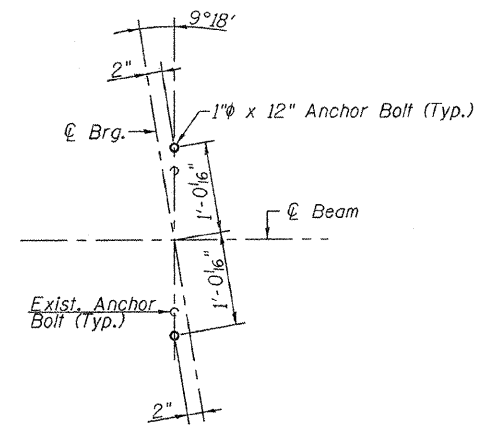
Equivalent rolled angle with stiffeners will be allowed in lieu of welded plates.



ELEVATION STEEL EXTENSION



SECTION B-B



ANCHOR BOLT SETTING DETAIL

Notes:
 Anchor bolts shall be ASTM F1554 all-thread (or an Engineer-approved alternate material) of the grade(s) and diameter(s) specified. ASTM A307 Grade C anchor bolts may be used in lieu of ASTM F1554 Grade 36 (Fy=36ksi). The corresponding specified grade of AASHTO M314 anchor bolts may be used in lieu of ASTM F1554.
 Drilled and set anchor bolts shall be installed according to Article 521.06 of the Standard Specifications.
 Side retainers and other steel members required for the bearing assembly shall be included in the cost of Elastomeric Bearing Assembly, Type I.
 Existing bearings at the abutments shall be removed and replaced according to the plans. Jacking shall be according to the Special Provision for "Jack and Remove Existing Bearings". If web stiffeners are not present directly over the jack location, hardwood timbers shall be installed tightly between top and bottom flanges to prevent rotation. The abutment bearings shall be in place and the jacks lowered before the new concrete deck is poured at the abutments.
 Diaphragm removal and replacement may be required to facilitate drilling holes. Cost shall be included with Furnishing and Erecting Structural Steel.
 New steel extensions, shim plates and connection bolts are included with Furnishing and Erecting Structural Steel.
 Prior to ordering any material, The Contractor shall verify in the field all bearing heights.
 The structural steel bearing plates for the expansion bearings shall conform to the requirements of AASHTO M270 Grade 50.

INTERIOR GIRDER REACTION TABLE		
R (DL)	(K)	46.4
R (LL)	(K)	49.0
R (IMP)	(K)	11.1
R (TOTAL)	(K)	106.5
Minimum Jack Capacity	(Tons)	38

BILL OF MATERIAL		
Item	Unit	Total
Elastomeric Bearing Assembly, Type I	Each	18
Anchor Bolts, 1"	Each	36
Jack and Remove Existing Bearings	Each	18
Furnishing and Erecting Structural Steel	Pound	3270

BEARING DETAILS
 IL. ROUTE 160 OVER U.S. ROUTE 50
 S.N. 014-0065

Allen Henderson & Associates, Inc. Civil and Structural Engineers Springfield, IL. 62703 Phone: (217)544-8033 IL. Design Firm No. 184-001907	SHEET NO. 11 14 SHEETS	F.A.P. RTE.	SECTION	COUNTY	TOTAL SHEETS	SHEET NO.
		690	14-12BR-1	CLINTON	72	31
		CONTRACT NO. 76B27				
		FED. ROAD DIST. NO.	ILLINOIS	FED. AID PROJECT		