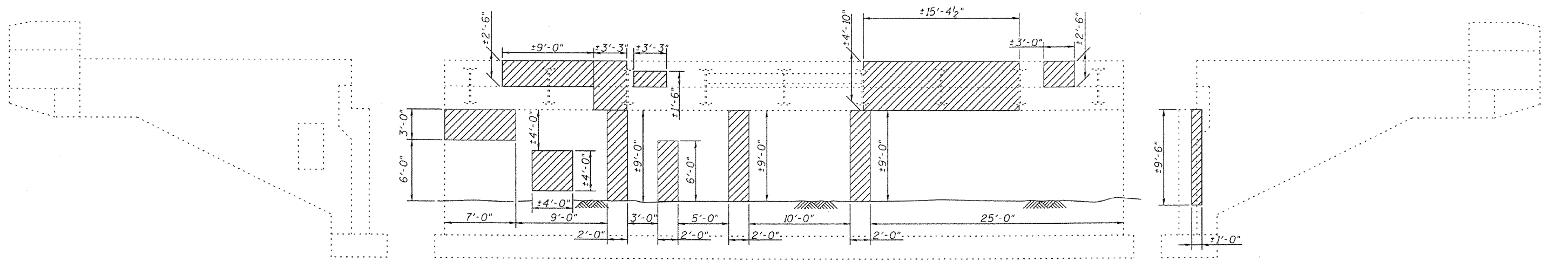


**N.W. WINGWALL**  
(Looking East)

**NORTH ABUTMENT**  
(Looking North)

**N.E. WINGWALL**  
(Looking West)



**S.E. WINGWALL**  
(Looking West)

**SOUTH ABUTMENT**  
(Looking South)


**S.W. WINGWALL**  
(Looking East)

**BILL OF MATERIAL**

Item	Unit	Total
Structural Repair of Concrete (Depth Equal to or less than 5")	Sq. Ft.	654

Notes: Hatched area indicates approximate area of Structural Repair of Concrete. Exact repairs are to be determined by the Engineer. All existing abutment seats shall be cleaned & sealed. Work will be paid for as Cleaning Bridge Seats.

**ABUTMENT CONCRETE REPAIR DETAILS**  
**IL. ROUTE 160 OVER U.S. ROUTE 50**  
**S.N. 014-0065**

 <b>Allen Henderson &amp; Associates, Inc.</b> Civil and Structural Engineers Springfield, IL. 62703 Phone: (217)544-8033 IL. Design Firm No. 184-001907	SHEET NO. 12  14 SHEETS	F.A.P. RTE.	SECTION	COUNTY	TOTAL SHEETS	SHEET NO.
		690	14-12BR-1	CLINTON	72	32
<b>CONTRACT NO. 76B27</b>						
FED. ROAD DIST. NO. _ ILLINOIS FED. AID PROJECT						