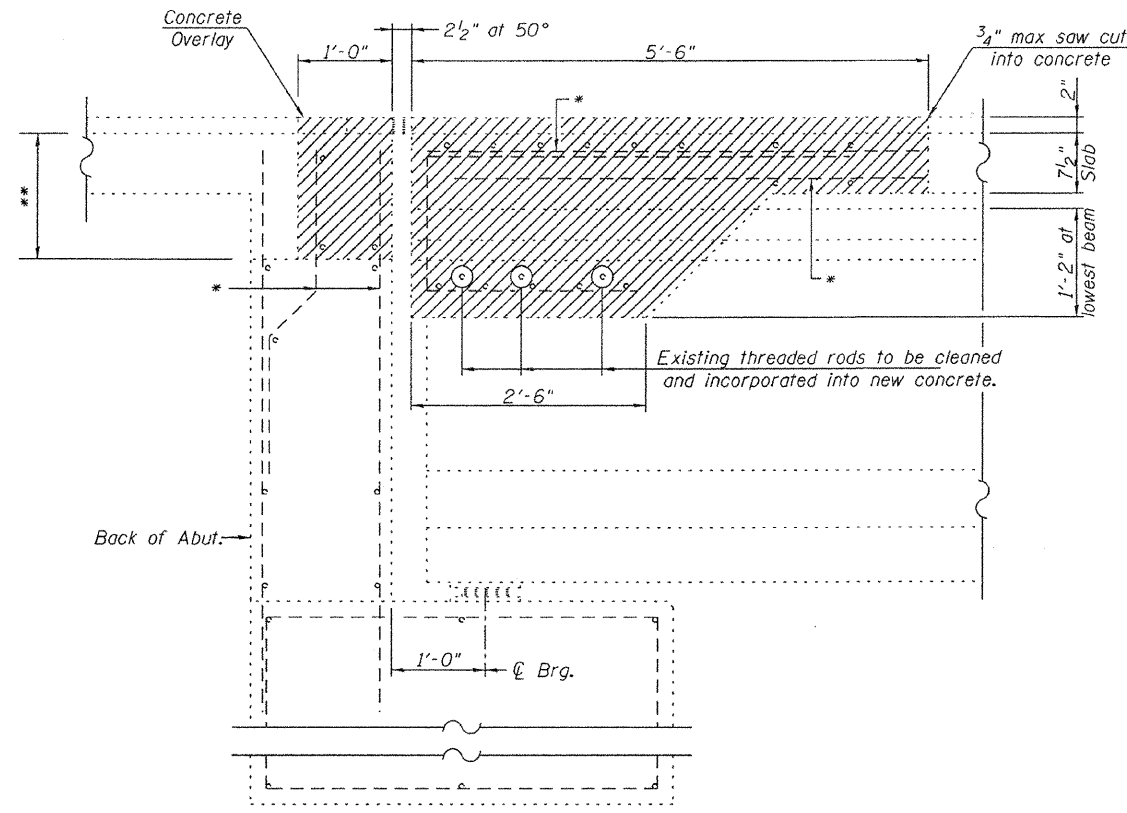


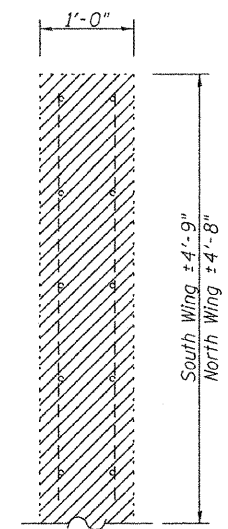
EXISTING PARTIAL PLAN
(West Abutment shown - East Abutment similar)



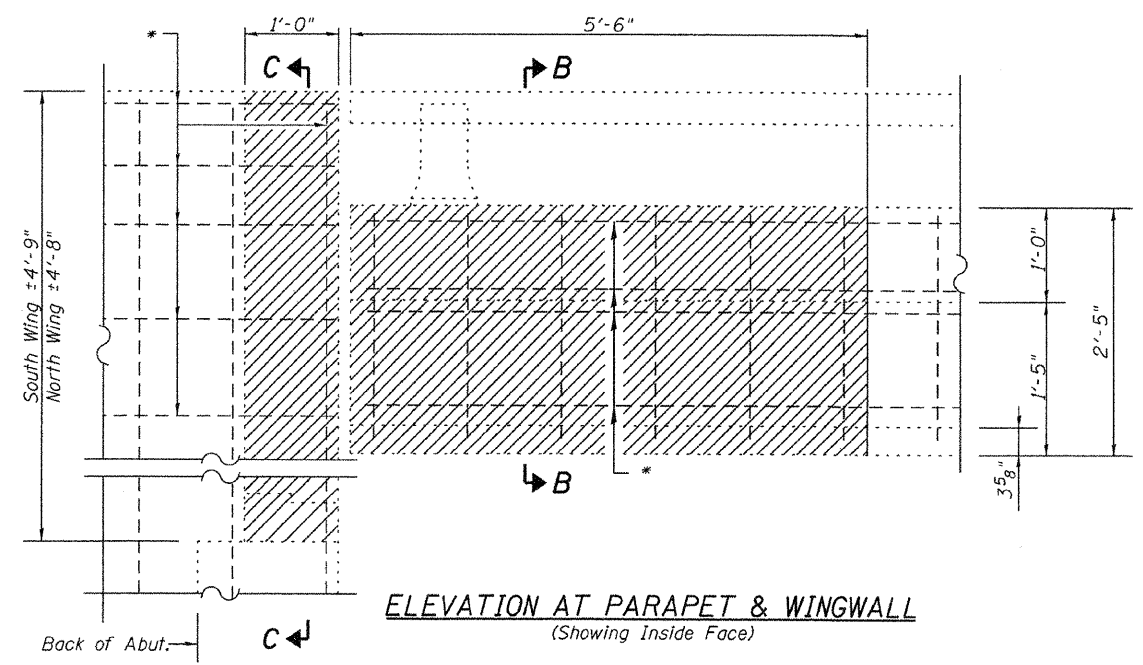
SECTION A-A

* Existing reinforcement to remain.
** 1'-3 1/4" at Inside Face of South Wing
1'-6 3/4" at @ Rdwy.
1'-2 1/4" at Inside Face of North Wing

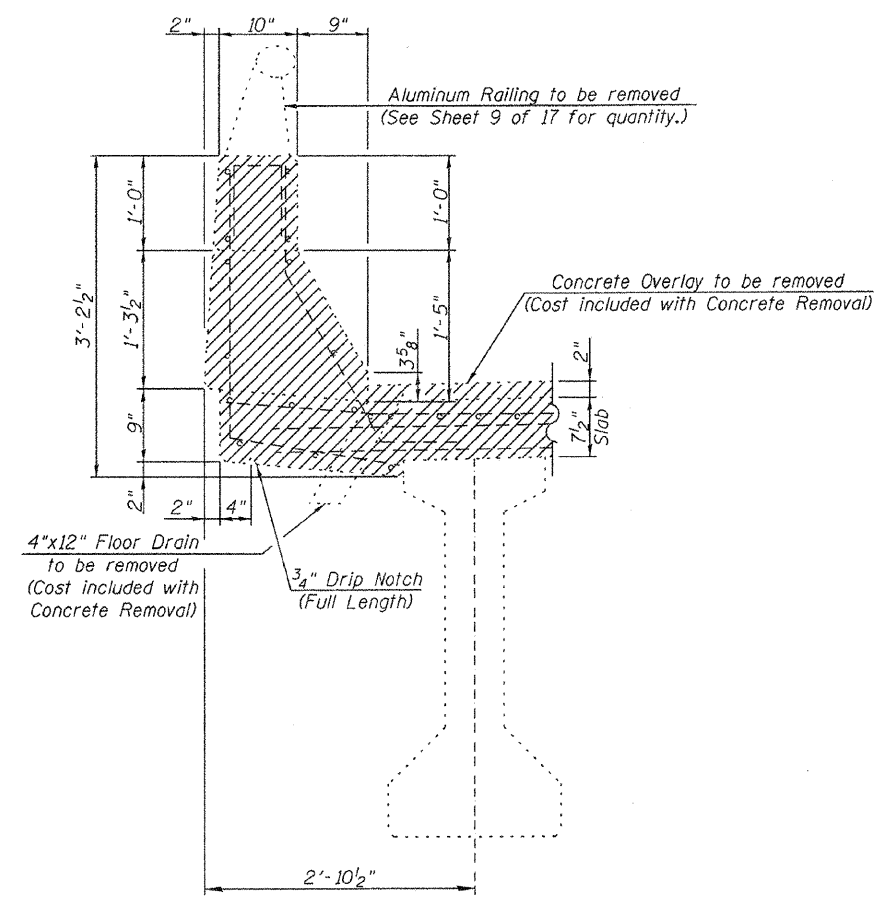
- Concrete Removal



SECTION C-C



ELEVATION AT PARAPET & WINGWALL
(Showing Inside Face)



SECTION B-B

NOTES
Removal of existing expansion joint and associated material shall not be paid for separately but shall be included in the cost of "Concrete Removal".
Trim existing reinforcement to accommodate proposed expansion joint.
The Contractor shall use extreme care during concrete removal so as not to damage the PPC I-Beams.
Existing reinforcement bars extending into the removal area shall be cleaned, straightened and incorporated into new construction. Any reinforcement bars that are damaged during concrete removal operations shall be replaced using an approved bar splicer or anchorage system.
Cost included in concrete removal.

**SUPERSTRUCTURE CONCRETE REMOVAL
AT ABUTMENT LOCATIONS
S.N. 014-0049**

Allen Henderson & Associates, Inc.
Civil and Structural Engineers Springfield, IL
62703 Phone: (217)544-8033 IL Design Firm
No. 184-001907

SHEET NO. 5
17 SHEETS

F.A.P. RTE.	SECTION	COUNTY	TOTAL SHEETS	SHEET NO.
327	14-12BR-1	CLINTON	72	49
CONTRACT NO. 76B27				
FED. ROAD DIST. NO. _ ILLINOIS FED. AID PROJECT				