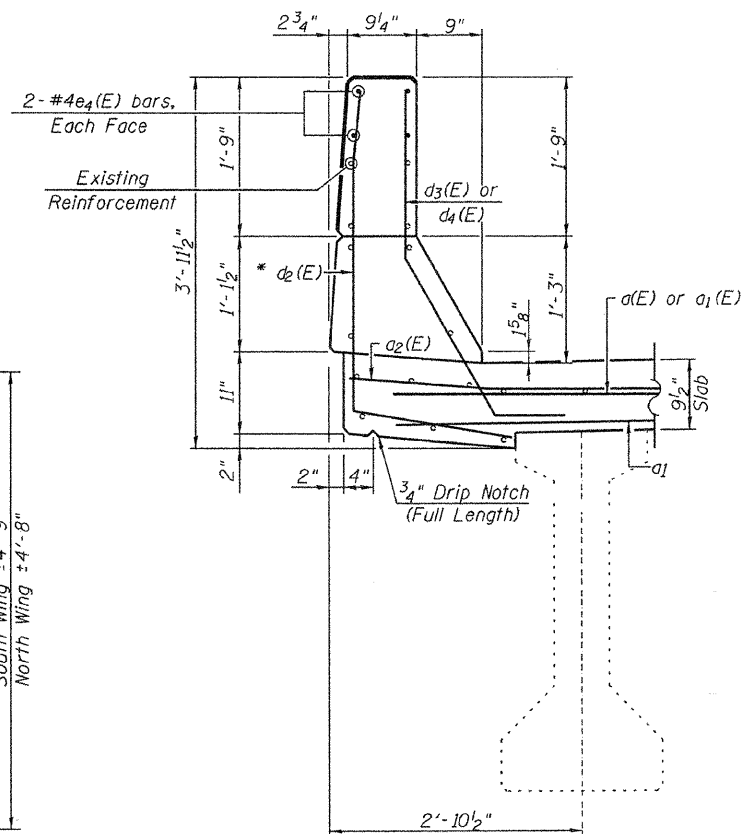
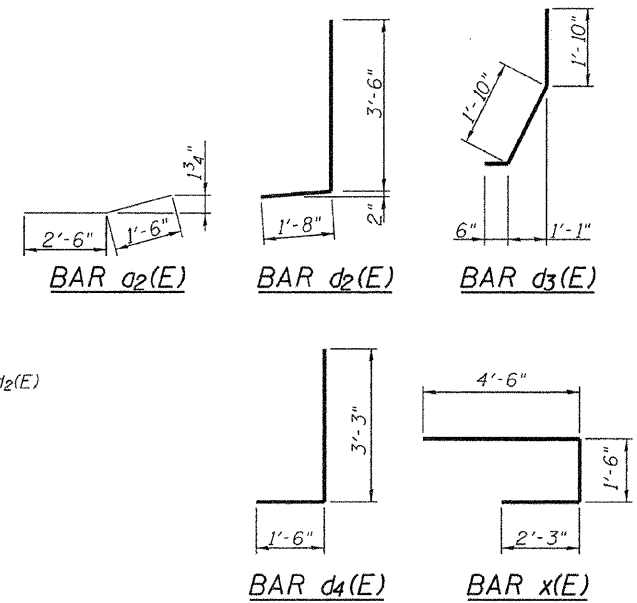


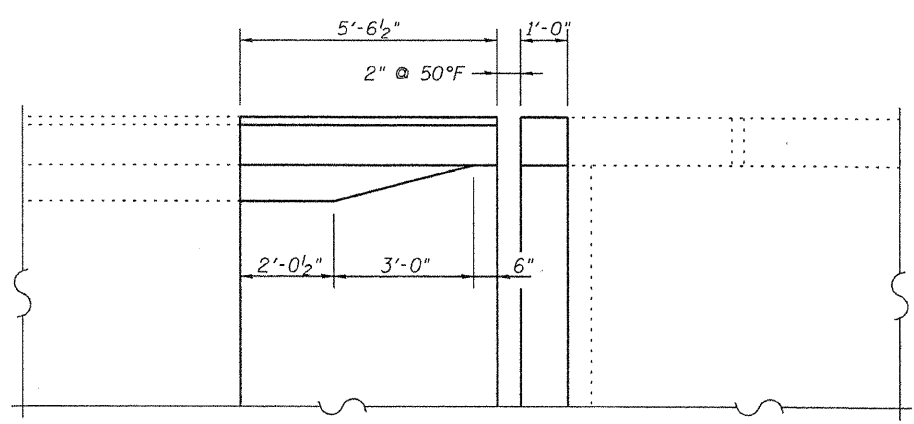
**CROSS SECTION THRU PROPOSED DECK**

(Looking East)



**SECTION THRU WINGWALL**

**SECTION THRU PROPOSED PARAPET**



**PARTIAL PLAN OF PARAPET**

**BILL OF MATERIAL**

Bar	No.	Size	Length	Shape
a(E)	72	#7	19'-8"	—
a1(E)	120	#6	19'-8"	—
a2(E)	48	#6	4'-0"	—
a3(E)	120	#6	6'-5"	—
a4(E)	60	#6	2'-11"	—
d2(E)	72	#4	5'-2"	⌋
d3(E)	56	#5	4'-2"	⌋
d4(E)	16	#5	4'-9"	⌋
e4(E)	48	#4	5'-2"	—
h(E)	16	#6	19'-6"	—
x(E)	360	#6	8'-3"	⌊
Reinforcement Bars, Epoxy Coated		Lbs.	13820	
Concrete Superstructure		Cu. Yds.	83	
Bar Splicers		Each	134	

**SUPERSTRUCTURE DETAILS**  
S.N. 014-0049

\* Field Bend d2(E) as required to facilitate placement.

**Allen Henderson & Associates, Inc.**  
Civil and Structural Engineers Springfield, IL  
62703 Phone: (217)544-8033 IL Design Firm  
No. 184-001907

SHEET NO. 8 17 SHEETS	F.A.P. RTE. 327	SECTION 14-12BR-1	COUNTY CLINTON	TOTAL SHEETS 72	SHEET NO. 52
	CONTRACT NO. 76B27				
FED. ROAD DIST. NO. ILLINOIS FED. AID PROJECT					