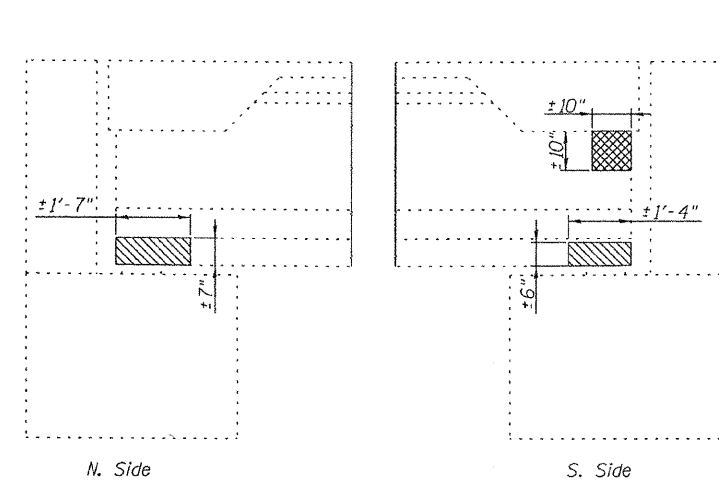
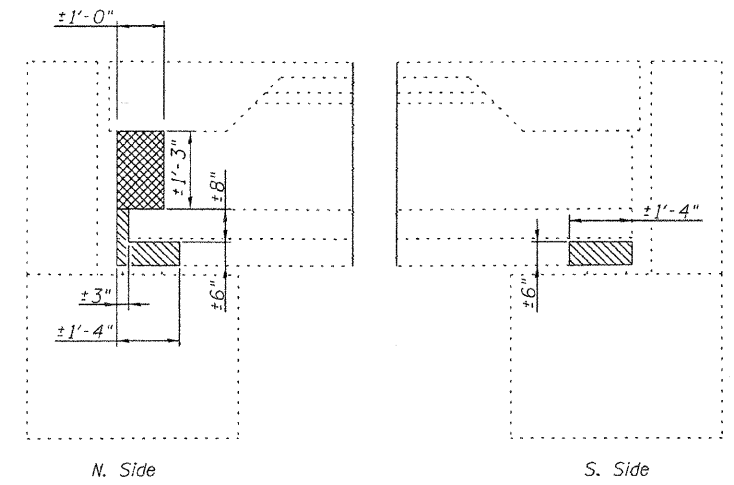


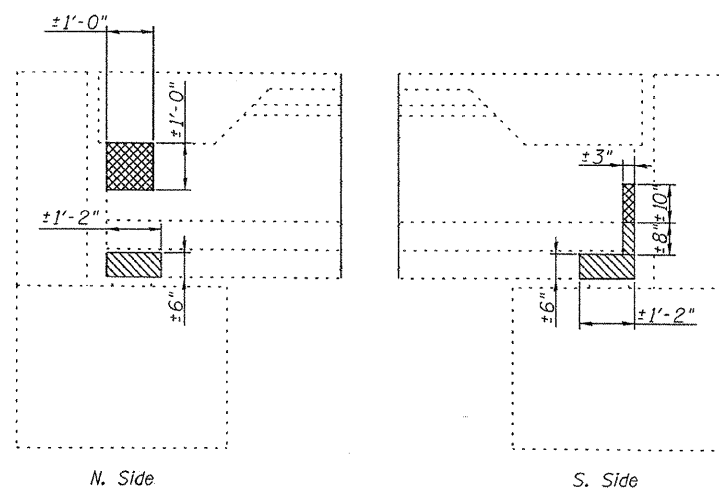
BEAM 1



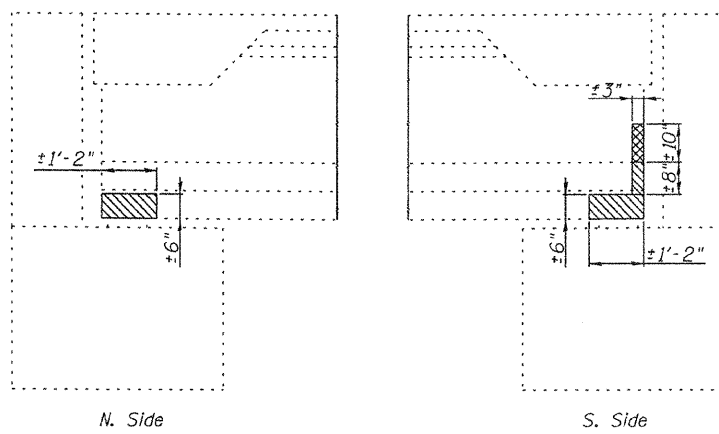
BEAM 2



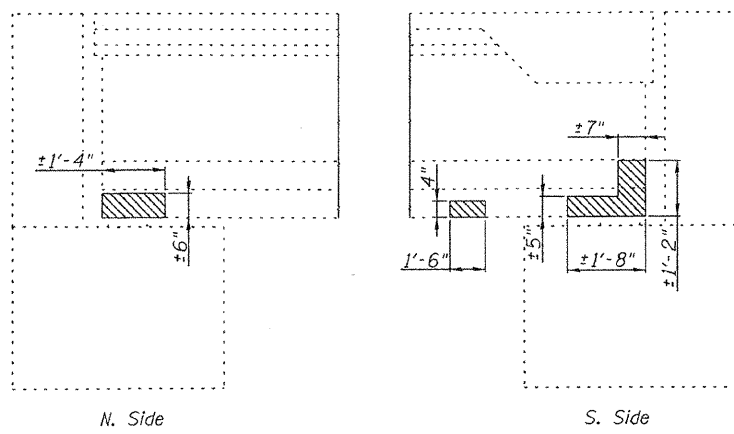
BEAM 3



BEAM 4



BEAM 5



BEAM 6

Note:  
 Hatched area indicates approximate area of Structural Repair of Concrete.  
 Cross-Hatched area indicates approximate area of Polymer Modified Portland Cement Mortar.  
 Exact repairs are to be determined by the Engineer.

- \* Damaged areas within the beam's flanges are to be repaired per Structural Repair of Concrete (Depth equal to or less than 5") only.
- \*\* Damaged area within the beam's web are to be repaired per Polymer Modified Portland Cement Mortar only. (Typ. all locations)

BILL OF MATERIAL

Item	Unit	Total
* Structural Repair of Concrete (Depth equal to or less than 5")	Sq. Ft.	9.4
** Polymer Modified Portland Cement Mortar	Sq. Ft.	4.3

PPC I-BEAM REPAIR DETAILS  
 (EAST ABUTMENT)  
 S.N. 014-0049

<p>Allen Henderson &amp; Associates, Inc.          Civil and Structural Engineers Springfield, IL.          62703 Phone: (217)544-8033 IL Design Firm          No. 184-001907</p>	SHEET NO. 14  17 SHEETS	F.A.P. RTE.	SECTION	COUNTY	TOTAL SHEETS	SHEET NO.
		327	14-12BR-1	CLINTON	72	58
		CONTRACT NO. 76B27				
		FED. ROAD DIST. NO.	ILLINOIS	FED. AID PROJECT		