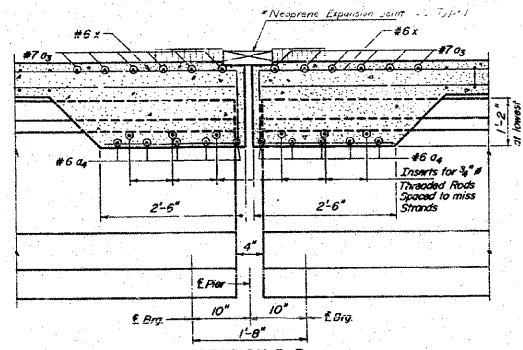
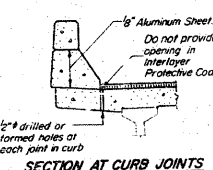
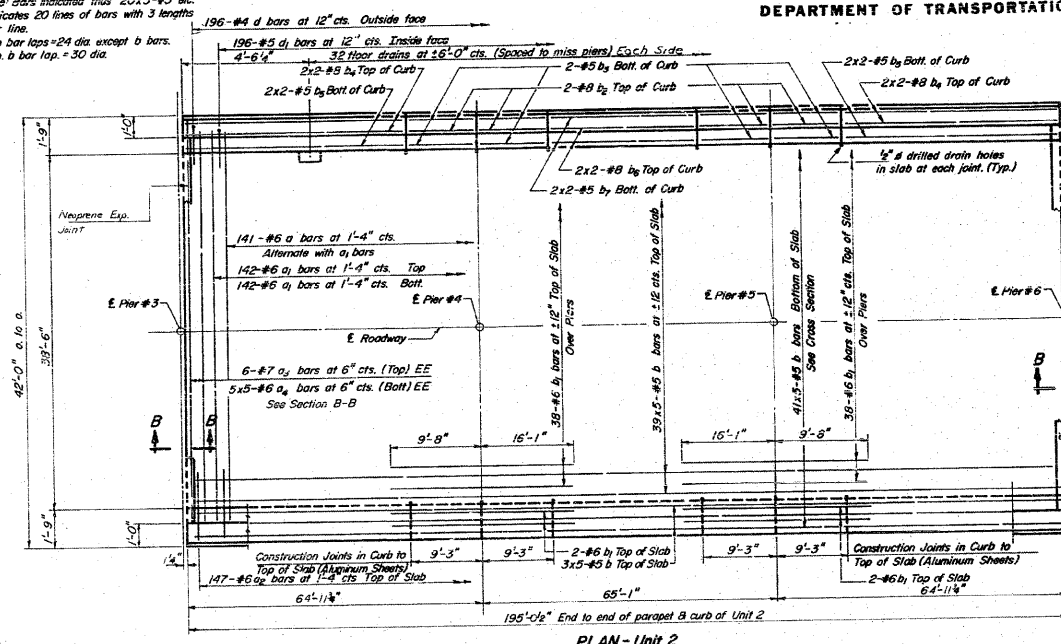


STATE OF ILLINOIS  
DEPARTMENT OF TRANSPORTATION

PROJECT NO.	SECTION	COUNTY	TOTAL SHEETS	SHEET NO.
14-118	CLINTON	CL	10	21

Note: Bars indicated thus 20x3-#5 etc. indicates 20 lines of bars with 3 lengths per line. Min. bar laps = 24 dia. except b bars. Min. b bar lap = 30 dia.

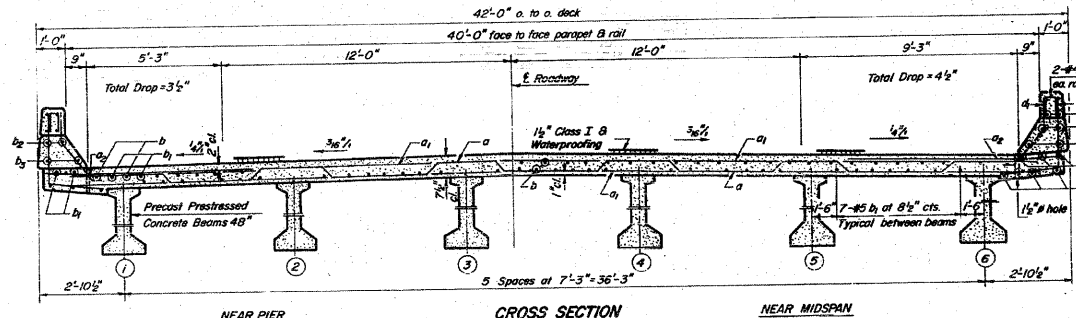
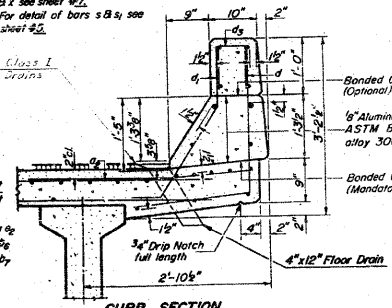


Note: For placement of bars d<sub>3</sub> and e thru g<sub>2</sub> see sheet #3. For Drain Detail see sheet #3. For spacing of bars m, m<sub>1</sub>, m<sub>2</sub>, s, s<sub>1</sub>, B x see sheet #2. For detail of bars s B s<sub>1</sub> see sheet #2.

For details of Neoprene Expansion Devices see sheet #6.

TWO UNITS  
BILL OF MATERIAL

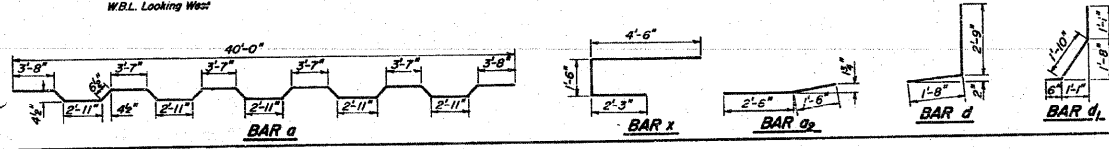
Bar	No	Size	Length	Shape
a	282	#6	41'-9"	
a <sub>1</sub>	569	#6	42'-0"	
a <sub>2</sub>	688	#6	4'-0"	
a <sub>3</sub>	24	#7	40'-0"	
a <sub>4</sub>	100	#6	6'-5"	
b	260	#5	10'-5"	
b <sub>1</sub>	168	#6	23'-9"	
b <sub>2</sub>	32	#9	9'-0"	
b <sub>3</sub>	32	#5	9'-0"	
b <sub>4</sub>	32	#9	23'-10"	
b <sub>5</sub>	32	#5	26'-6"	
b <sub>6</sub>	16	#9	24'-3"	
b <sub>7</sub>	16	#5	23'-10"	
d	784	#4	4'-5"	J
d <sub>1</sub>	784	#5	3'-5"	J
m	200	#4	6'-4"	
m <sub>1</sub>	40	#6	5'-2"	
m <sub>2</sub>	120	#4	5'-4"	
s	100	#4	11'-2"	LF
s <sub>1</sub>	300	#4	8'-9"	LF
x	240	#5	8'-3"	
Reinforcement Bars				Lbs. 119,100
Class X Concrete				Cu Yds. 548.7



DESIGNED: *[Signature]*  
CHECKED: *[Signature]*  
DRAWN: *[Signature]*  
CHECKED: *[Signature]*

EXAMINED: *[Signature]*  
PASSED: *[Signature]*  
APPROVED: *[Signature]*

Aug. 4 1970



SUPERSTRUCTURE  
UNIT 2  
F.A.R.T. 409 SEC. 14-12 B  
CLINTON COUNTY  
STA. 2769+75

FILE NAME =	USER NAME = marntm	DESIGNED -	REVISED -	STATE OF ILLINOIS DEPARTMENT OF TRANSPORTATION	EXISTING STRUCTURE PLANS LOCATION 2		F.A.P. RTE.	SECTION	COUNTY	TOTAL SHEETS	SHEET NO.	
et:\pw_wor\k\p\dot\manntm\dms52470\p\l\10207b.dgn		DRAWN -	REVISED -		SCALE: NO SCALE	SHEET NO. 3 OF 8 SHEETS	STA.	327	14-12BR-1	CLINTON	72	68
		CHECKED -	REVISED -				TO STA.					
		DATE	REVISED -					FED. ROAD DIST. NO.	ILLINOIS FED. AID PROJECT			CONTRACT NO. 76B27