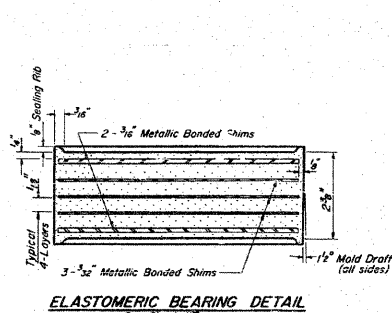
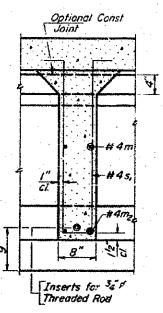
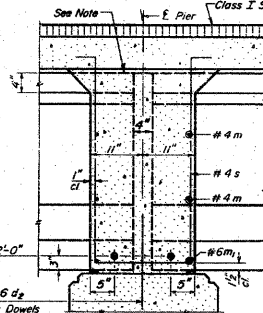
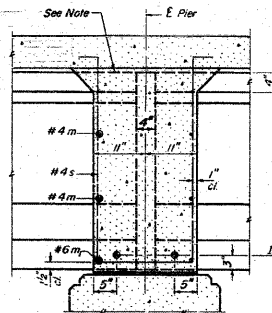
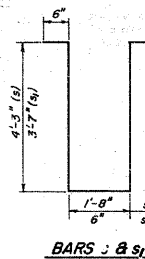
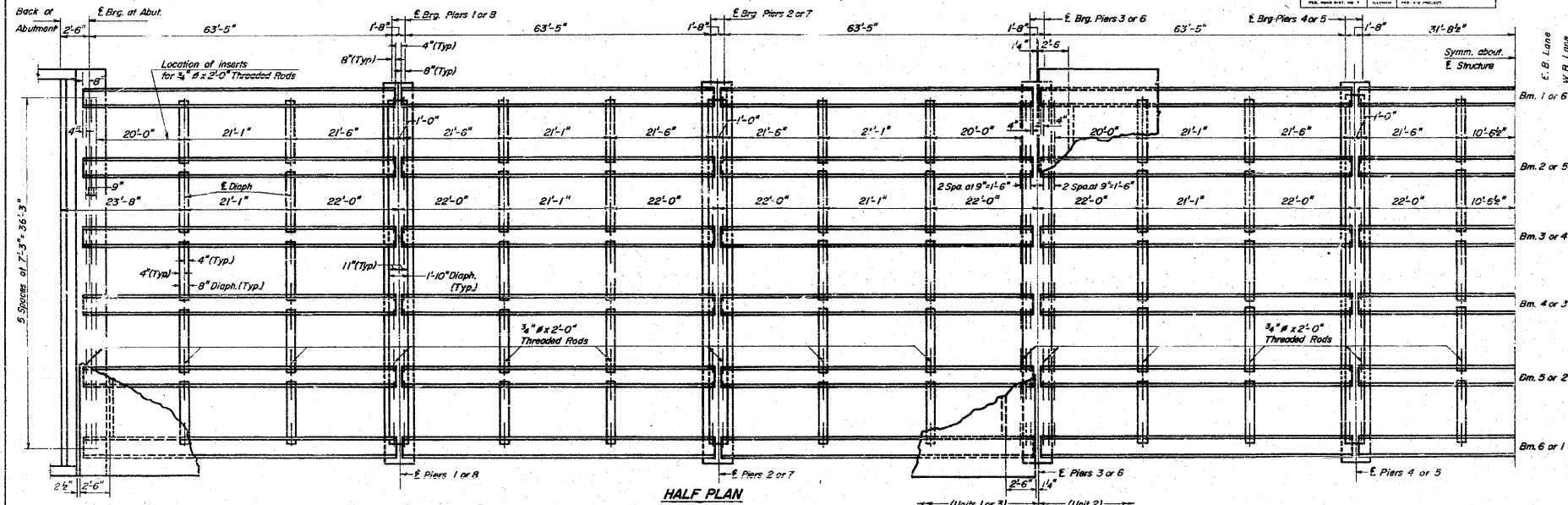


STATE OF ILLINOIS
DEPARTMENT OF TRANSPORTATION

| | | | | | |
|-------------|---------|---------|----------|--------------|-------|
| PROJECT NO. | 14-128 | SECTION | CLINTON | SHEET NO. | 72 |
| DATE | 1/27/66 | SCALE | NO SCALE | TOTAL SHEETS | 72 |
| | | | | SHEET NO. | 69 |
| | | | | CONTRACT NO. | 76B27 |



DESIGNED: J. J. ...
CHECKED: P. Barnett
DRAWN: W. ...
CHECKED: G. ...

EXAMINED: ...
PASSED: ...
APPROVED: Richard H. ...

PI-2J 1-27-66

Note: Four diaphragms flush with top of beam. Concrete in slab above this line shall be placed not less than 45 min. nor more than 90 min. after diaphragm has been poured.

Bars m, n, o, p, q, r, s & t are included in Bill of Material on Sheet #3 & 4.

FRAMING PLAN
F.A.R.T. 409 SEC. 14-128
CLINTON COUNTY
STA. 2769+75

| | | | | | | | | | | |
|---|--------------------|------------|-----------|---|--|----------------|-----------|---|--------------|-----------|
| FILE NAME = | USER NAME = manntm | DESIGNED - | REVISED - | STATE OF ILLINOIS DEPARTMENT OF TRANSPORTATION | EXISTING STRUCTURE PLANS LOCATION 2 | F.A.P. RTE. | SECTION | COUNTY | TOTAL SHEETS | SHEET NO. |
| c:\pw_work\pwsdot\manntm\dms52478\p1n10207b.dgn | | DRAWN - | REVISED - | | | 327 | 14-128R-1 | CLINTON | 72 | 69 |
| PLOT SCALE = 50.0000' / IN. | | CHECKED - | REVISED - | | | CLINTON COUNTY | | CONTRACT NO. 76B27 | | |
| PLOT DATE = 12/3/2009 | | DATE - | REVISED - | | | STA. TO STA. | | FED. ROAD DIST. NO. ILLINOIS FED. AID PROJECT | | |