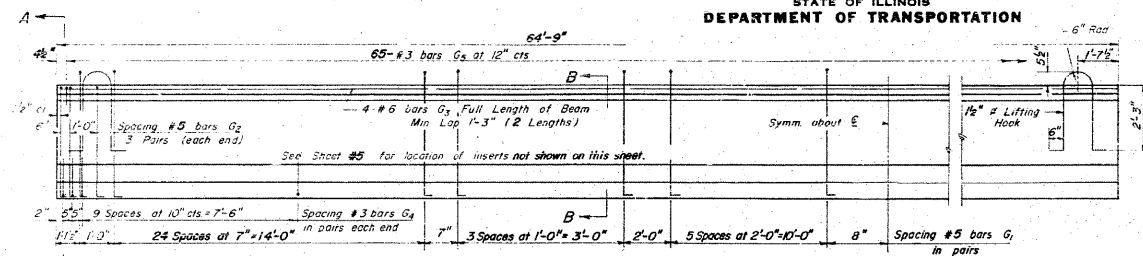
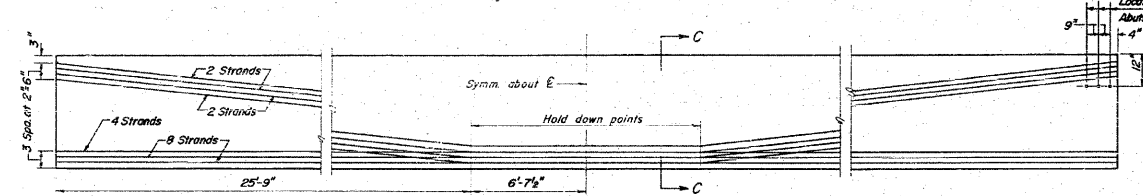


STATE OF ILLINOIS
DEPARTMENT OF TRANSPORTATION

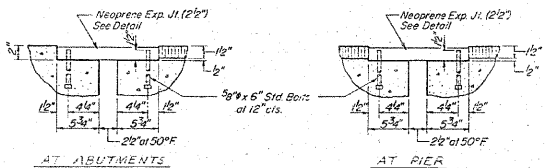
SHEET NO 6
21 SHEETS



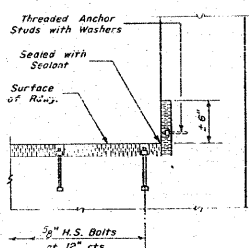
ELEVATION OF BEAMS
Showing Reinforcement & Dimensions



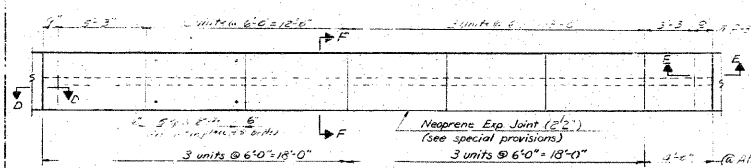
ELEVATION OF BEAMS
Showing Prestressing Steel



SECTION F-F



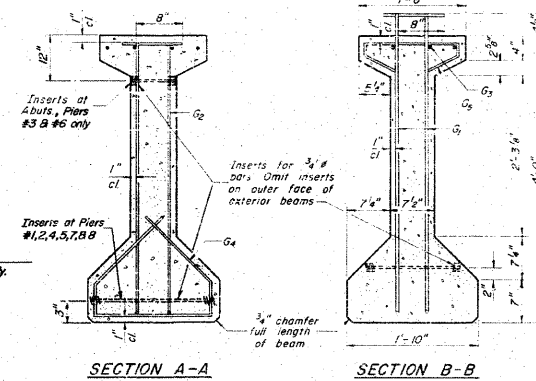
SECTION D-D
AT ABUT.



PLAN
(Showing Expansion Joints)

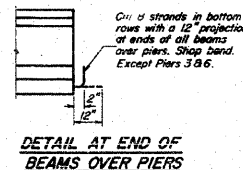
DESIGNED: J. Miller
CHECKED: R. Borgett
THOMAS B. Fuller
G.R.M.
EXAMINED: [Signature]
DATED: [Signature]
Richard H. Goltzerman

PI-4-48S B-1-63 Rev. 1-2-64 Rev. 1-27-66 Rev. 5-20-68

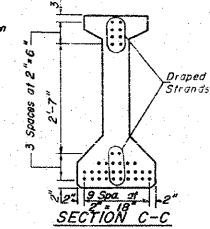


SECTION A-A

SECTION B-B



DETAIL AT END OF
BEAMS OVER PIERS



SECTION C-C

*BAR LIST

Bar	No.	Size	Length	Shape
G1	144	#5	5'-2 1/2"	1L
G2	12	#5	4'-10"	1L
G3	8	#6	33'-0"	
G4	48	#3	3'-5 1/2"	
G5	65	#3	2'-9"	

* For one beam only

BILL OF MATERIAL TWO BRIDGES

Item	Unit	Total
Furnishing & Erecting Precast Prestressed Concrete I-Beams, 48"	Lin. Ft.	6993

NOTES

All inserts and threaded rods for inserts, reinforcing and Prestressing Steel, and other items which are cast into the Precast Concrete I-Beams shall be included in the contract unit price per linear foot of "Furnishing And Erecting Precast Prestressed Concrete I-Beams, 48 in." Ends of beams to be encased with cast in place concrete shall not be covered with asphalt paint. Steel for lifting hooks shall be ASTM A-306 Grade 70-80. Prestressing Steel shall have a nominal diameter of 1/2". Inserts for 3/4" threaded rods are to be two strut, coil type for interior I-Beams and single coil, flared loop type for exterior I-Beams.

DETAIL OF NEOPRENE EXPANSION JOINT (2' x 2')
See Special Provisions

GIRDER DETAILS

F.A.R.T. 409 SEC. 14-12B
CLINTON COUNTY
STA. 2769+75

STATE OF ILLINOIS
DEPARTMENT OF TRANSPORTATION

EXISTING STRUCTURE PLANS
LOCATION 2

FILE NAME =	USER NAME =	DESIGNED -	REVISED -
cs:\pw_work\pwwdot\manntm\dms52470\p1n10207b.dgn	manntm		
PLOT SCALE = 50.0000' / IN.	CHECKED -	REVISED -	
PLOT DATE = 12/3/2009	DATE -	REVISED -	

SCALE: NO SCALE SHEET NO. 5 OF 8 SHEETS STA. TO STA.

F.A.P. RTE.	SECTION	COUNTY	TOTAL SHEETS	SHEET NO.
327	14-12BR-1	CLINTON	72	70
FED. ROAD DIST. NO. [ILLINOIS] FED. AID PROJECT			CONTRACT NO. 76B27	