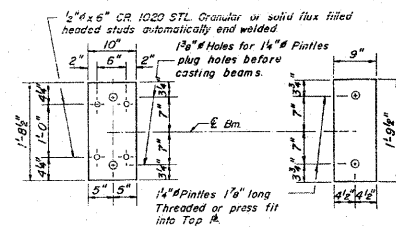
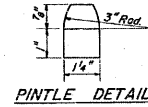
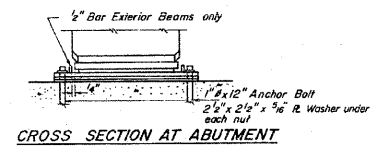
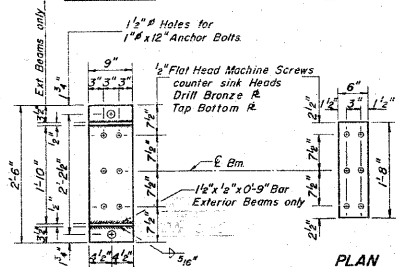


STATE OF ILLINOIS
DEPARTMENT OF TRANSPORTATION

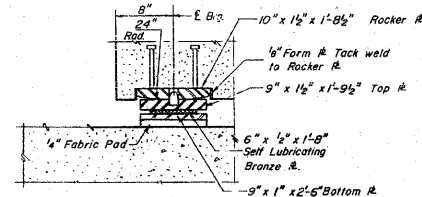
DATE	REVISION	BY	NO.	DATE
11/14/09	14-11B	CLINTON	41	13
SHEET NO. 7 21 SHEETS				



PLAN TOP #

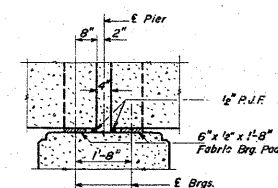
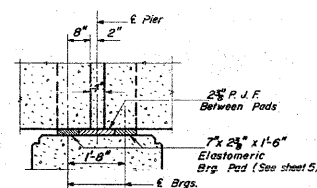
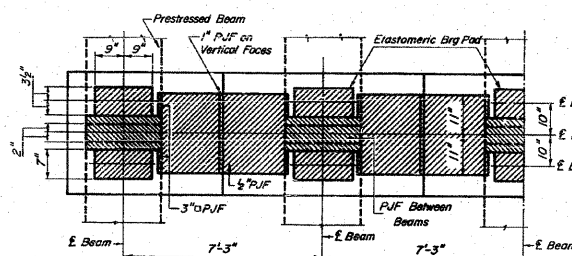
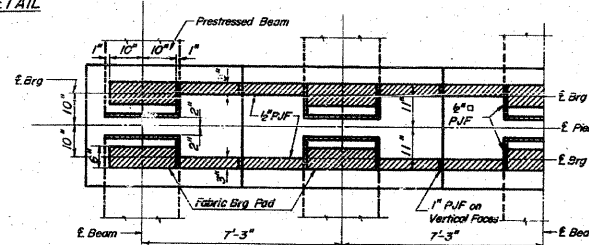


PLAN BOTTOM #



DESIGNED: <i>W. J. ...</i>	EXAMINED: <i>...</i>
CHECKED: <i>G.M. Miller</i>	PASSED: <i>...</i>
DRAWN BY: <i>F. L. ...</i>	DATE: <i>...</i>
CHECKED: <i>G.M.</i>	BY: <i>Richard H. ...</i>

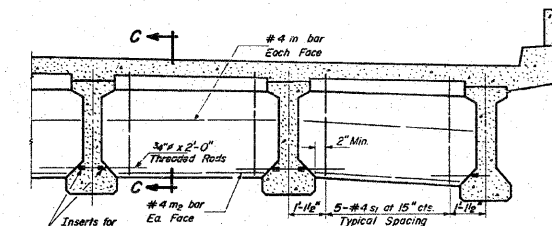
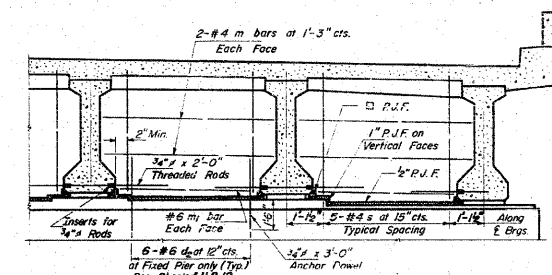
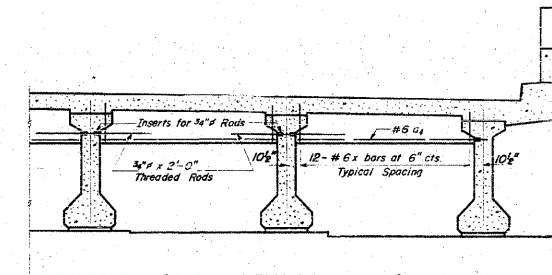
PI-3 8-1-63 Rev. 1-2-64 Rev. 1-27-66



EXPANSION PIERS 1,4,88
(Dimensions Along E of Beam)

FIXED PIERS 2,5,87
(Dimensions Along E of Beam)

Note:
Weight of Top Plates, Bottom Plates, Bronze Plates and Shim Plates of Bearing Assemblies is included in the weight of Structural Steel on Sheet #2.
Cost of Rocker & cast into beam is included in the cost of Furnishing and Erecting Precast Prestressed Concrete I-Beams.



INTERIOR DIAPHRAGMS
(For Section C-C See Sheet #5, Section at Int. Diaph.)

BEARING DETAILS
F.A.P. 409 SEC 14-12B
CLINTON COUNTY
STA. 2769+75

FILE NAME =
c:\pwork\pwork\dot\menntm\dms52470\p1n1827b.dgn

USER NAME = marvntm
DESIGNED -
DRAWN -
CHECKED -
PLOT SCALE = 50,0000 ' / IN.
PLOT DATE = 12/3/2009

DESIGNED -
DRAWN -
CHECKED -
DATE -

REVISED -
REVISED -
REVISED -
REVISED -

STATE OF ILLINOIS
DEPARTMENT OF TRANSPORTATION

EXISTING STRUCTURE PLANS
LOCATION 2
SCALE: NO SCALE SHEET NO. 6 OF 8 SHEETS STA. TO STA.

F.A.P. RTE.	SECTION	COUNTY	TOTAL SHEETS	SHEET NO.
327	14-12BR-1	CLINTON	72	71
FED. ROAD DIST. NO.			ILLINOIS FED. AID PROJECT	
			CONTRACT NO. 76B27	