

STATE OF ILLINOIS
DEPARTMENT OF TRANSPORTATION

PROJECT NO.	14-128	SECTION	41	SHEET NO.	12
21 SHEETS					

PILE DATA
Type Steel H-12 x 53
Capacity Drive to Refusal
Length Pile 49'-0" W Bound 55'-0" E Bound
Reqd. 62+1 Test Pile of P-4 WBL
B 1 Test Pile of P-5 EBL

Note:
Space reinforcement in cap to miss anchor bolts.
Minimum bar laps = 24 dia. unless otherwise noted.
All edges shall have standard 1/4" chamfers except as noted.
Four steps monolithically with cap.

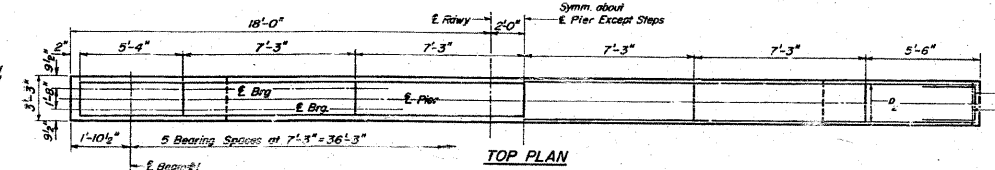
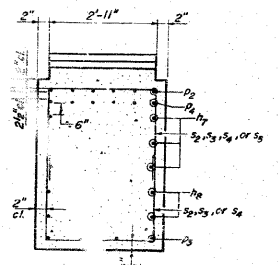
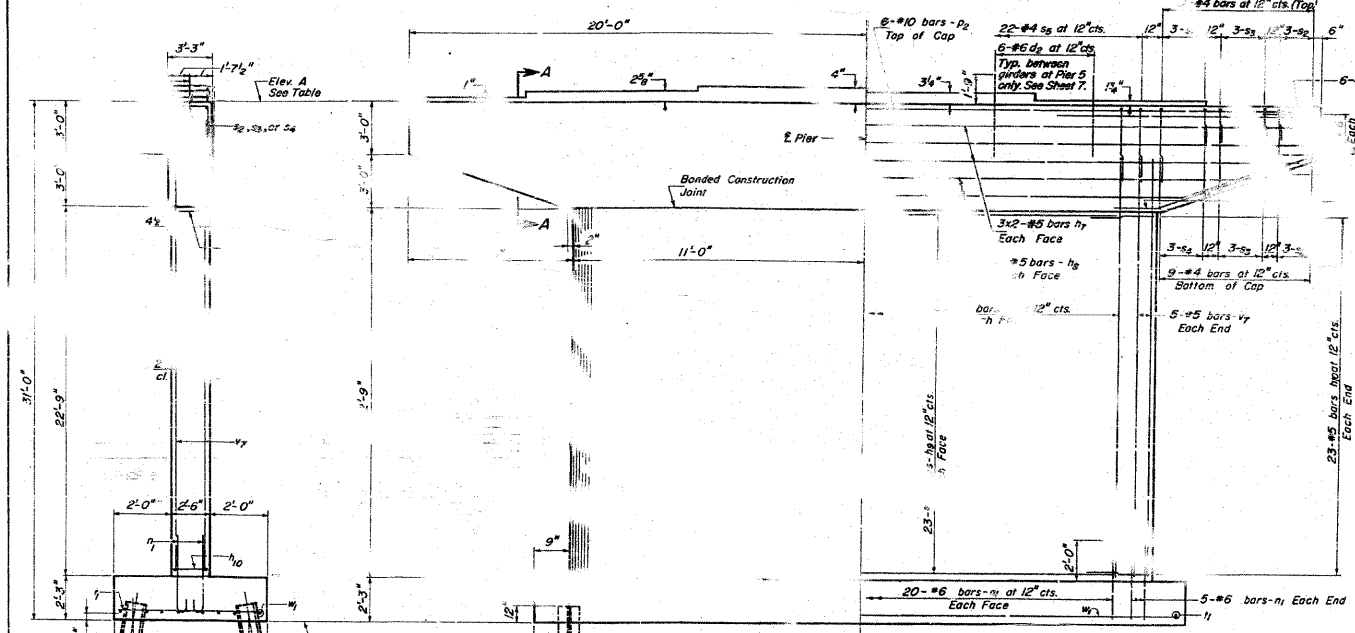


TABLE OF PIER ELEVATIONS

	A	B
Pier #4	424.07	423.07
Pier #5	423.92	422.92



SECTION 1-A



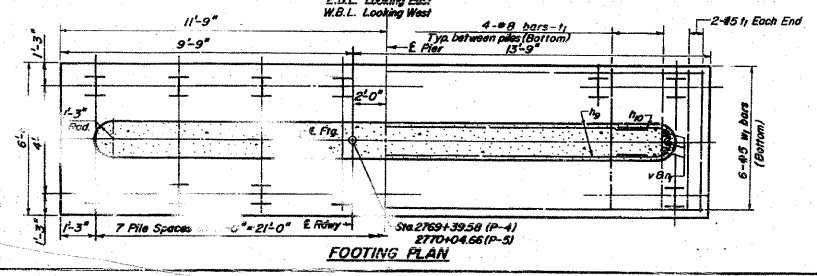
A & B DIMENSIONS

Bar	A	B
P1	2'-11"	2'-3"
P2	2'-11"	2'-9"
P3	2'-4"	3'-5"
P4	2'-11"	4'-6"

BAR	No.	Size	Length	Shape
de	60		3'-6"	
hy	48	#5	20'-5"	
hg	16	#5	4'-0"	
hh	184	#5	6"	
hh	184	#5	6"	
h1	200	#6	4'-0"	
P2	24	#10	39'-6"	
P3	32	#5	10'-6"	
P4	28	#10	14'-0"	
P5	48	#4	7'-5"	
P6	48	#4	8'-5"	
P7	48	#4	9'-5"	
P8	88	#4	11'-4"	
P9	128	#8	6'-3"	
P10	32	#6	9'-10"	
P11	200	#5	25'-6"	
P12	24	#5	23'-3"	

DESIGNED: [Signature]
CHECKED: P. Barnett
DRAWN: G. Ritchie
APPROVED: [Signature]
P-10; V=2.0 5-20-68

ELEVATION
E.B.L. Looking East
W.B.L. Looking West



FOOTING PLAN

PIERS 485
F.A.R.T. 409 SEC. 14-128
CLINTON COUNTY
STA. 2769+75

FILE NAME =	USER NAME =	DESIGNED -	REVISED -	STATE OF ILLINOIS DEPARTMENT OF TRANSPORTATION	EXISTING STRUCTURE PLANS LOCATION 2	F.A.P. RTE.	SECTION	COUNTY	TOTAL SHEETS	SHEET NO.	
ct:\pwork\p\dot\mannta\dms52478\p\in10	mannta	DRAWN -	REVISED -			327	14-128R-1	CLINTON	72	72A	
		CHECKED -	REVISED -			CONTRACT NO. 76827					
		DATE -	REVISED -			FED. ROAD DIST. NO. (ILLINOIS) FED. AID PROJECT					