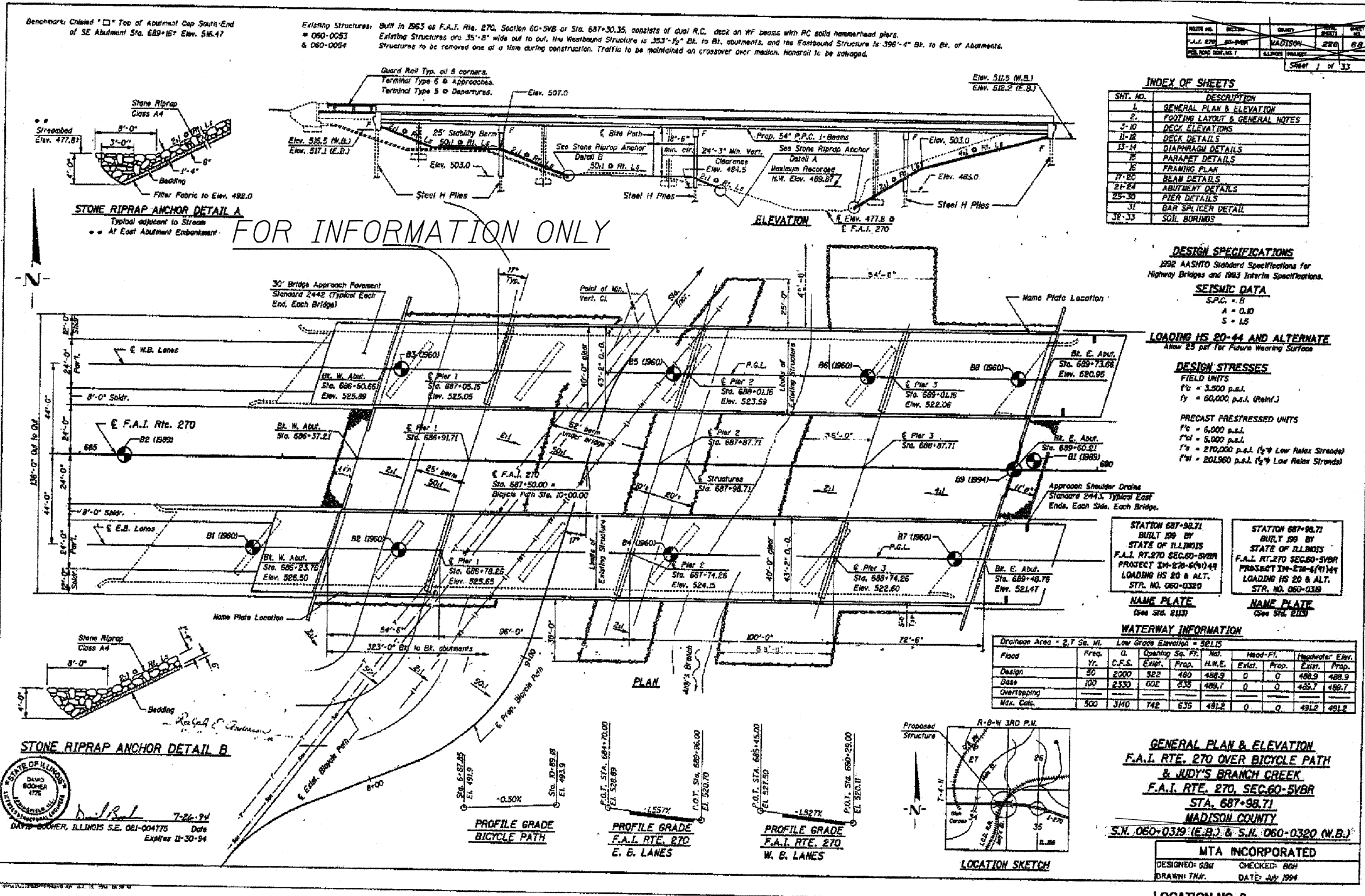


STATE OF ILLINOIS  
DEPARTMENT OF TRANSPORTATION



ROUTE NO.	SECTION	COUNTY	TOTAL SHEETS	SHEET NO.
F.A.I. 270	D-8 BRIDGE	MADISON	12	62
FED. ROAD DIST. NO.	ILLINOIS PROJECT			

Sheet 1 of 33

**INDEX OF SHEETS**

SHT. NO.	DESCRIPTION
1	GENERAL PLAN & ELEVATION
2	FOOTING LAYOUT & GENERAL NOTES
3-10	DECK ELEVATIONS
11-12	DECK DETAILS
13-14	DIAPHRAGM DETAILS
15	PARAPET DETAILS
16	FRAMING PLAN
17-20	BEAM DETAILS
21-24	ABUTMENT DETAILS
25-30	PIER DETAILS
31	BAR SPICER DETAIL
32-33	SOIL BORINGS

**DESIGN SPECIFICATIONS**  
1992 AASHTO Standard Specifications for Highway Bridges and 1993 Interim Specifications.

**SEISMIC DATA**  
S.P.C. = B  
A = 0.10  
S = 15

**LOADING HS 20-44 AND ALTERNATE**  
Allow 25 psi for Future Wearing Surface

**DESIGN STRESSES**  
FIELD UNITS  
f<sub>c</sub> = 3,500 p.s.i.  
f<sub>y</sub> = 60,000 p.s.i. (Reinf.)

**PRECAST PRESTRESSED UNITS**  
f<sub>c</sub> = 6,000 p.s.i.  
f<sub>ps</sub> = 5,000 p.s.i.  
f<sub>ps</sub> = 270,000 p.s.i. (1/2" Low Relax Strand)  
f<sub>ps</sub> = 201,960 p.s.i. (3/4" Low Relax Strand)

**STATION 687+92.71**  
BUILT BY  
STATE OF ILLINOIS  
F.A.I. RTE. 270 SEC. 60-5VBR  
PROJECT IM-270-6(1)144  
LOADING HS 20 & ALT.  
STR. NO. 060-0320

**STATION 687+92.71**  
BUILT BY  
STATE OF ILLINOIS  
F.A.I. RTE. 270 SEC. 60-5VBR  
PROJECT IM-270-6(1)144  
LOADING HS 20 & ALT.  
STR. NO. 060-0320

**NAME PLATE**  
(See Sta. 2137)

**NAME PLATE**  
(See Sta. 2137)

**WATERWAY INFORMATION**

Drainage Area = 2.7 Sq. Mi. Low Grade Elevation = 321.75

Flood	Freq. Yr.	C.F.S.	Opening Sq. Ft.		Head-Ft.	Highwater Elev.	
			Clear.	Prop.		Exist.	Prop.
Design	50	2000	522	480	488.9	0	488.9
Base	100	2530	602	538	489.7	0	489.7
Overtopping							
Mix. Calc.	500	3400	742	638	491.2	0	491.2

**GENERAL PLAN & ELEVATION**  
F.A.I. RTE. 270 OVER BICYCLE PATH  
& JUDY'S BRANCH CREEK  
F.A.I. RTE. 270, SEC. 60-5VBR  
STA. 687+92.71  
MADISON COUNTY  
S.N. 060-0319 (E.B.) & S.N. 060-0320 (W.B.)

MTA INCORPORATED  
DESIGNED: BSM CHECKED: BSM  
DRAWN: THJ DATE: JUN 1994

LOCATION NO. 2

DESIGNED AYY  
CHECKED JAU  
DRAWN AYY  
CHECKED JAU

March 5, 2010  
EXAMINED  
PASSED  
ENGINEER OF STRUCTURAL SERVICES  
ENGINEER OF BRIDGES AND STRUCTURES

SHEET NO. 8 OF 10 SHEETS	F.A.I. RTE.	SECTION	COUNTY	TOTAL SHEETS	SHEET NO.
	270	D-8 Bridge Cleaning 2010-1	MADISON	12	10
FED. ROAD DIST. NO.			ILLINOIS FED. AID PROJECT		
CONTRACT NO. 76D45					