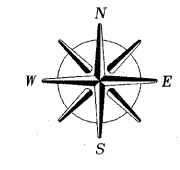


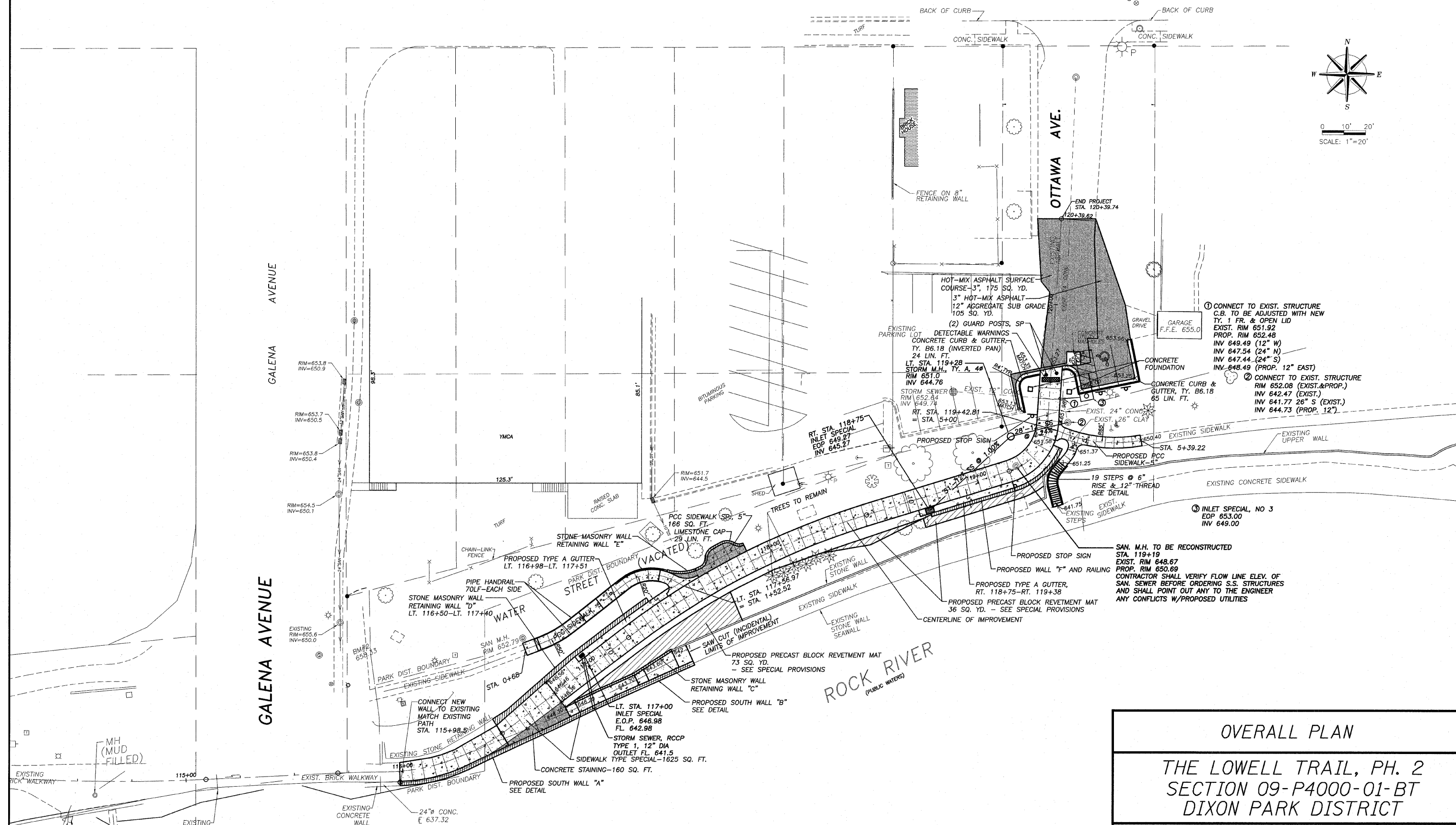
ROUTE NO.	SECTION	COUNTY	TOTAL SHEETS	SHEET NO.
P.A.M.	*	LEE	21	8
FED. ROAD DIST. NO. 7	ILLINOIS	FED. AID PROJECT-		

* Section 09-P4000-01-BT Contract #85504

BOYD STREET



0 10' 20'
SCALE: 1"=20'



- ① CONNECT TO EXIST. STRUCTURE C.B. TO BE ADJUSTED WITH NEW TY. 1 FR. & OPEN LID
EXIST. RIM 651.92
PROP. RIM 652.48
INV 649.49 (12" W)
INV 647.54 (24" N)
INV 647.44 (24" S)
INV 648.49 (PROP. 12" EAST)
- ② CONNECT TO EXIST. STRUCTURE RIM 652.08 (EXIST.&PROP.)
INV 642.47 (EXIST.)
INV 641.77 26" S (EXIST.)
INV 644.73 (PROP. 12")
- ③ INLET SPECIAL, NO 3
EOP 653.00
INV 649.00

SAN. M.H. TO BE RECONSTRUCTED
STA. 119+19
EXIST. RIM 648.67
PROP. RIM 650.69
CONTRACTOR SHALL VERIFY FLOW LINE ELEV. OF SAN. SEWER BEFORE ORDERING S.S. STRUCTURES AND SHALL POINT OUT ANY TO THE ENGINEER ANY CONFLICTS W/PROPOSED UTILITIES

OVERALL PLAN
THE LOWELL TRAIL, PH. 2
SECTION 09-P4000-01-BT
DIXON PARK DISTRICT

wendler
GROUND BREAKING SOLUTIONS
engineers · surveyors · scientists

www.wendlers.com ph: 815.288.2261

Date: 12/15/2009
Job: 2090299