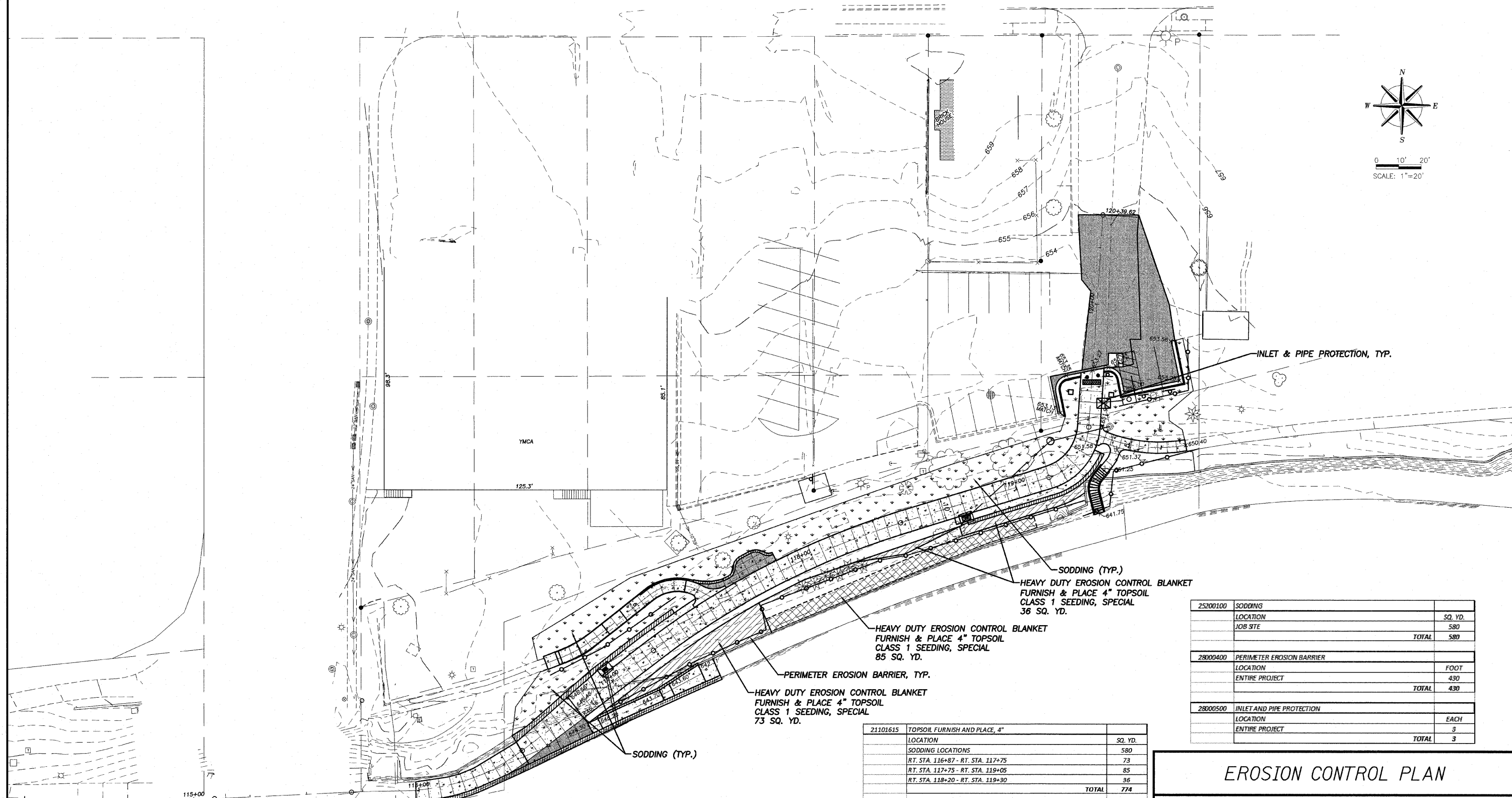
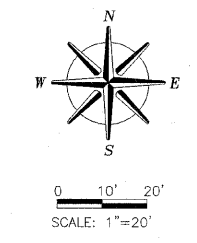


ROUTE NO.	SECTION	COUNTY	TOTAL SHEETS	SHEET NO.
1	*	LEE	21	19
F.A.M.		ILLINOIS FED. AID PROJECT-		
FED. ROAD DIST. NO. 7		* Section 09-P4000-01-BT Contract #85504		



25200100	SODDING		
	LOCATION		SQ. YD.
	JOB SITE		580
		TOTAL	580
28000400	PERIMETER EROSION BARRIER		
	LOCATION		FOOT
	ENTIRE PROJECT		430
		TOTAL	430
28000500	INLET AND PIPE PROTECTION		
	LOCATION		EACH
	ENTIRE PROJECT		3
		TOTAL	3

21101615	TOPSOIL FURNISH AND PLACE, 4"		
	LOCATION		SQ. YD.
	SODDING LOCATIONS		580
	RT. STA. 116+87 - RT. STA. 117+75		73
	RT. STA. 117+75 - RT. STA. 119+05		85
	RT. STA. 118+20 - RT. STA. 119+30		36
		TOTAL	774
25000900	SEEDING, CLASS 1 (SPECIAL)		
	LOCATION		ACRE
	RT. STA. 116+87 - RT. STA. 117+75		0.02
	RT. STA. 117+75 - RT. STA. 119+05		0.02
	RT. STA. 118+20 - RT. STA. 119+30		0.007
		TOTAL	0.047
25100635	HEAVY DUTY EROSION CONTROL BLANKET		
	LOCATION		SQ. YD.
	RT. STA. 116+87 - RT. STA. 117+75		73
	RT. STA. 117+75 - RT. STA. 119+05		85
	RT. STA. 118+20 - RT. STA. 119+30		36
		TOTAL	194

EROSION CONTROL PLAN

THE LOWELL TRAIL, PH. 2
SECTION 09-P4000-01-BT
DIXON PARK DISTRICT



Date:
12/15/2009

Job:
2090299

www.wendlergs.com

GROUND BREAKING SOLUTIONS
engineers · surveyors · scientists

ph: 815.288.2261