

F.A.S. RTE.	SECTION	COUNTY	TOTAL SHEETS	SHEET NO.
1322	07-00222-01-BR	IROQUOIS	19	1
FED. ROAD DIST. NO. 7	ILLINOIS	CONTRACT NO. 87431		

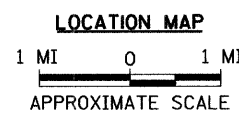
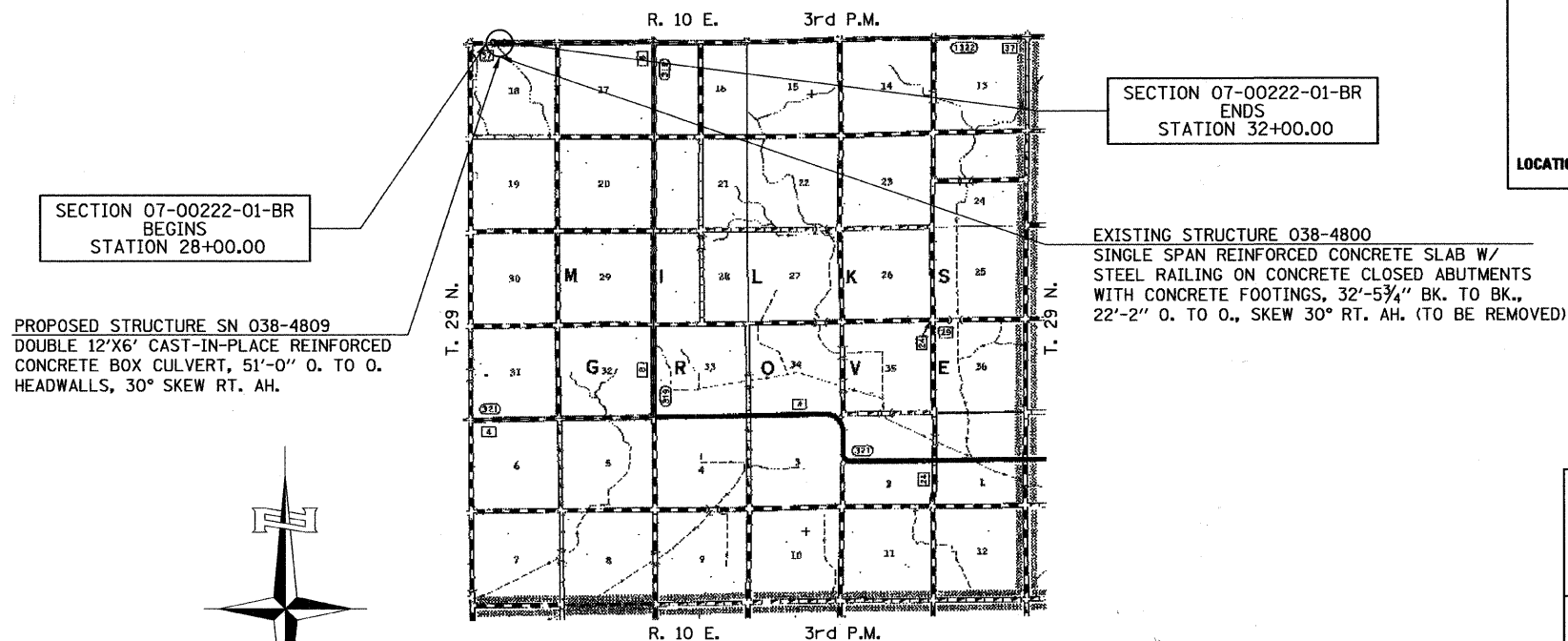
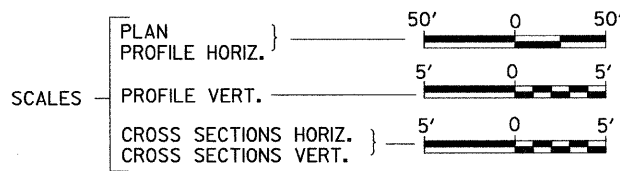
**STATE OF ILLINOIS**  
**DEPARTMENT OF TRANSPORTATION**  
**PLANS FOR PROPOSED**  
**HIGHWAY BRIDGE PROGRAM**  
**IROQUOIS COUNTY**  
**SECTION 07-00222-01-BR**  
**F.A.S. 1322 (CH 37) OVER**  
**WEST BRANCH OF HORSE CREEK**  
**PROJECT NO. BRS-1322(124)**  
**JOB NUMBER C-93-165-09**

**INDEX OF SHEETS**

SHEET NO.	DESCRIPTION
1.	COVER SHEET
2.	GENERAL NOTES, DETAILS, TYPICAL SECTIONS
3.	SUMMARY OF QUANTITIES, SCHEDULES OF QUANTITIES
4.	TRAFFIC CONTROL PLAN
5.	EROSION CONTROL PLAN
6.	PLAN AND PROFILE
7.-13.	STRUCTURE PLANS
14.-19.	CROSS SECTIONS

**REQUIRED HIGHWAY STANDARDS**

- 000001-05
- 280001-05
- 515001-03
- 630001-08
- 630101-08
- 630301-05
- 635006-03
- 635011-02
- 701901-01
- 780001-02
- BLR 21-8



PLANS DESIGNED IN ACCORDANCE WITH BUREAU OF LOCAL ROADS AND STREETS MANUAL GUIDELINES FOR TWO LANE RURAL COLLECTORS - RECONSTRUCTION

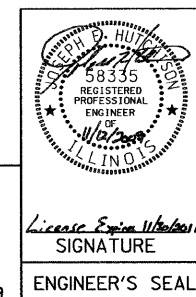
APPROVED Nov 9 2009  
*[Signature]*  
IROQUOIS COUNTY ENGINEER

PASSED 11-25 2009

*[Signature]*  
DISTRICT THREE ENGINEER OF LOCAL ROADS & STREETS

Released For Bid Based on Limited Review 11-25 2009

*[Signature]*  
DEPUTY DIRECTOR OF HIGHWAYS,  
REGION TWO ENGINEER  
STATE OF ILLINOIS  
DEPARTMENT OF TRANSPORTATION



**Hutchison Engineering, Inc.**  
JACKSONVILLE ILLINOIS  
SHOREWOOD ILLINOIS  
2009 JOB#2599

NET LENGTH OF PROJECT = 400.00 FEET = 0.076 MILES  
DESIGN CLASSIFICATION: MAJOR-COLLECTOR (NON-URBAN)  
DESIGN ADT = 500 (2029)  
DESIGN SPEED = 50 MPH

**UTILITY COMPANIES**  
AT&T  
JOLIET, ILLINOIS

EASTERN ILLINELECTRIC COOPERATIVE  
PAXTON, ILLINOIS

**J.U.L.I.E.**  
**JOINT UTILITY LOCATION INFORMATION FOR EXCAVATION**  
1-800-892-0123  
OR 811

**CONTRACT NO. 87431**

2599E001