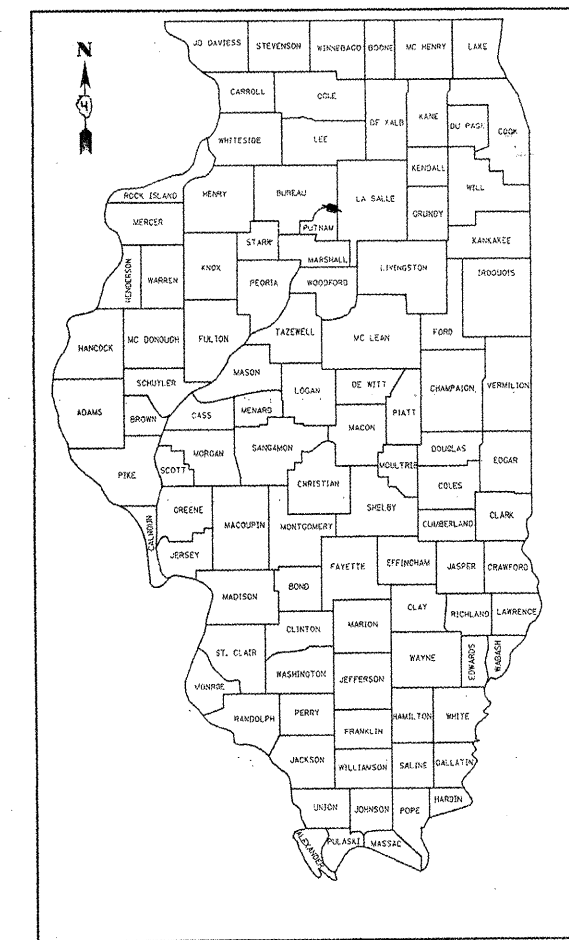


INDEX OF SHEETS

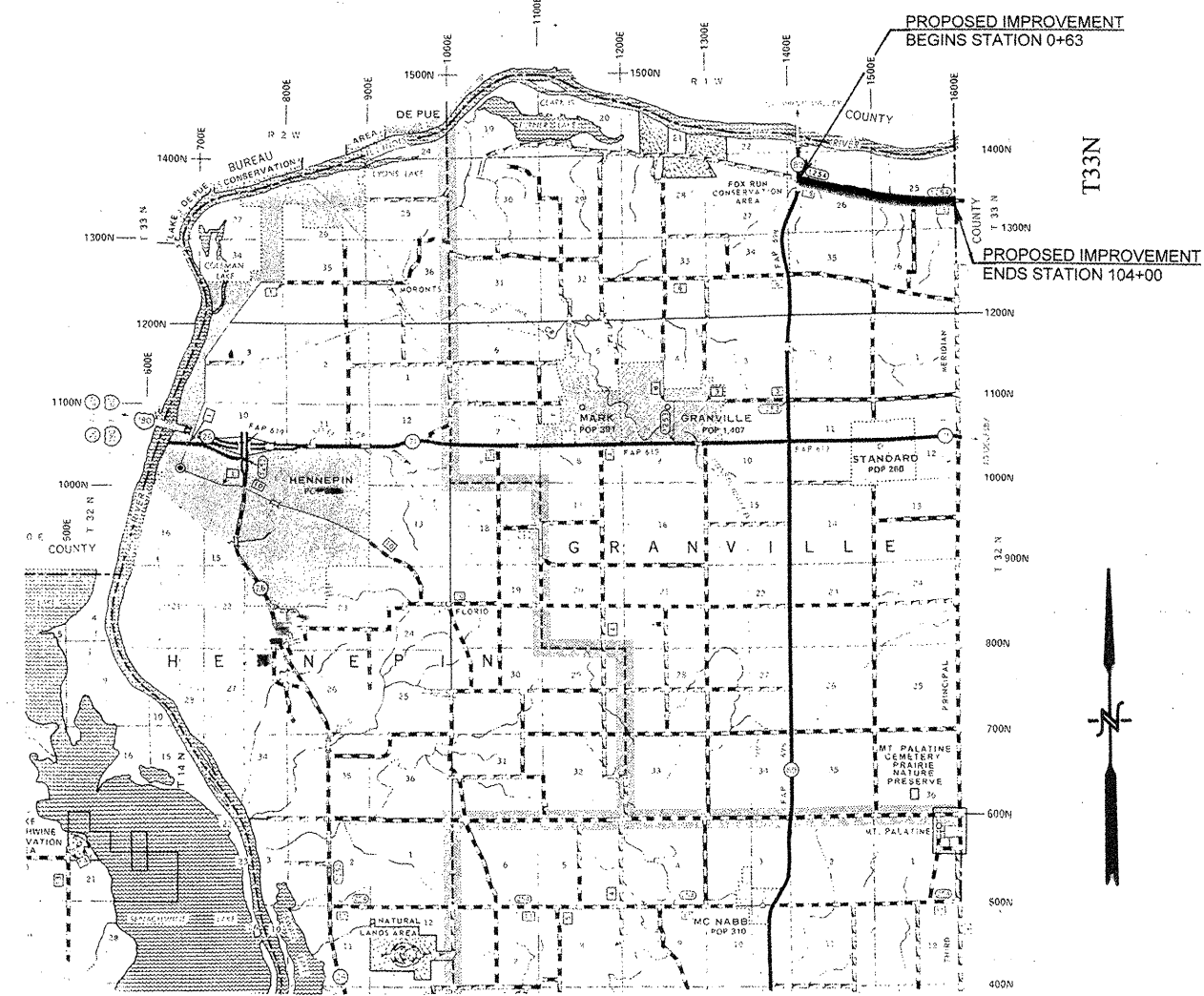
SHEET NO. 1	COVER SHEET AND SUMMARY OF QUANTITIES
SHEET NO. 2	TABULATION OF QUANTITIES
SHEET NO. 3	TYPICAL CROSS SECTIONS, SHOULDER DETAIL, BUTT JOINT DETAIL AND TAPER DETAILS
SHEET NO. 4	MAILBOX TURNOUT, ENTRANCE DETAILS, SCHEDULE OF NO PASSING ZONES

STATE OF ILLINOIS
DEPARTMENT OF TRANSPORTATION
DIVISION OF HIGHWAYS
AMERICAN RECOVERY & REINVESTMENT ACT FUNDING
FAS 1254 (CH 16)
SECTION 07-00020-00-RS
PUTNAM COUNTY
PROJECT ARA-1254(110)
JOB C-94-112-06

- STANDARDS:
- 701311-03 LANE CLOSURE TWO LANE, TWO WAY MOVING OPERATIONS - DAY ONLY
 - 701901-01 TRAFFIC CONTROL DEVICES
 - 780001-02 TYPICAL PAVEMENT MARKINGS
 - 701306-02 LANE CLOSURE TWO LANE, TWO WAY SLOW MOVING OPERATIONS - DAY ONLY FOR SPEEDS EQUAL OR LESS THAN 45 MPH



LOCATION OF SECTION INDICATED THUS:



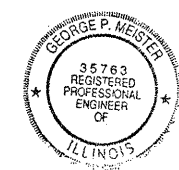
NET LENGTH OF SECTION 10,337.00 FEET = 1.9577 MILES

SUMMARY OF QUANTITIES
CONSTRUCTION CODE 1000

CODE NO.	UNIT	ITEM	QUANTITY
40600100	GALLON	BITUMINOUS MATERIALS (PRIME COAT)	3358.0
40600300	TON	AGGREGATE (PRIME COAT)	50.0
40600982	SY	HOT MIX ASPHALT SURFACE REMOVAL BUTT JOINT	152.0
40603310	TON	HOT-MIX ASPHALT SURFACE COURSE MIX "C" N50	2823.0
48101200	TON	AGGREGATE SHOULDERS, TYPE B	150.0
67100100	L SUM	MOBILIZATION	1.0
70100460	L SUM	TRAFFIC CONTROL AND PROTECTION STND 701306	1.0
70300100	FT	SHORT TERM PAVEMENT MARKING	2068.0
70300220	FT	TEMPORARY PAVEMENT MARKING LINE 4"	27372.0
70301000	SF	WORK ZONE PAVEMENT MARKING REMOVAL	345.0
* 78001110	FT	PAINT PAVEMENT MARKING-LINE 4"	27372.0

* SPECIALTY ITEMS

PLANS PREPARED BY
GEORGE P. MEISTER
 REGISTERED PROFESSIONAL ENGINEER
George P. Meister 8/25/09
 Registration No. 62-35763
 Expires 11-30-09



J.U.L.I.E. 1-800-892-0123

CLASS II ROAD 10 YEAR DESIGN

CURRENT ADT	3100
(10 year) DESIGN ADT	3424
STRUCTURAL DESIGN TRAFFIC	3258
P.C. 94% ADT	3066
S.U. 5% ADT	160
M.U. 1% ADT	32

T.F. =	0.1535
I.B.R. =	3.3
Dt =	3.03
Provided	3.60

PROPOSED BITUMINOUS RESURFACING: 1 1/2" SURFACE CSE.

FUNCTIONAL CLASSIFICATION =
 MAJOR COLLECTOR

APPROVED *August 25 2009*
George P. Meister
 PUTNAM COUNTY ENGINEER

PASSED *12-14 2009*
JDC
 DISTRICT ENGINEER OF LOCAL ROADS & STREETS

Releasing For Bid Based on Limited Review
8/25/09
 REGION THREE ENGINEER
 STATE OF ILLINOIS
 DEPARTMENT OF TRANSPORTATION