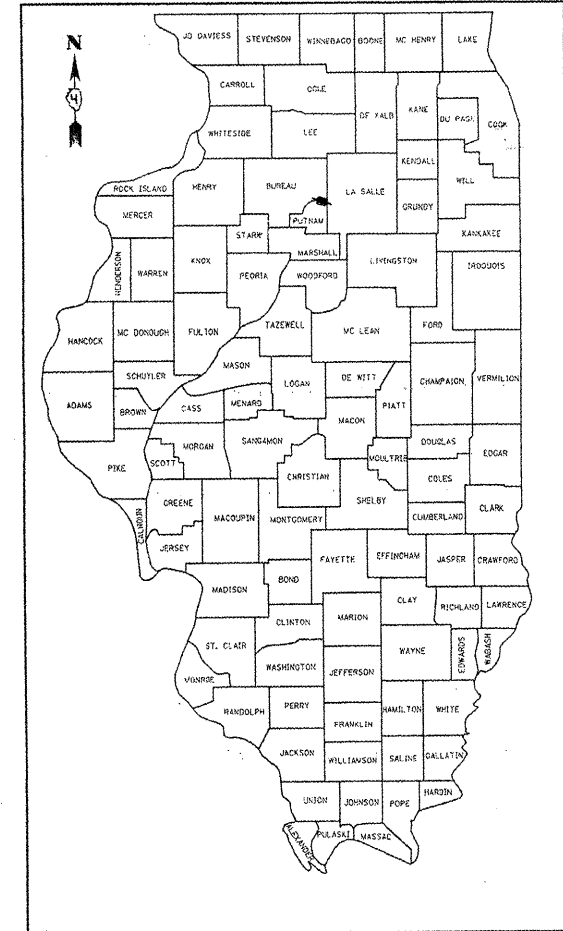


INDEX OF SHEETS

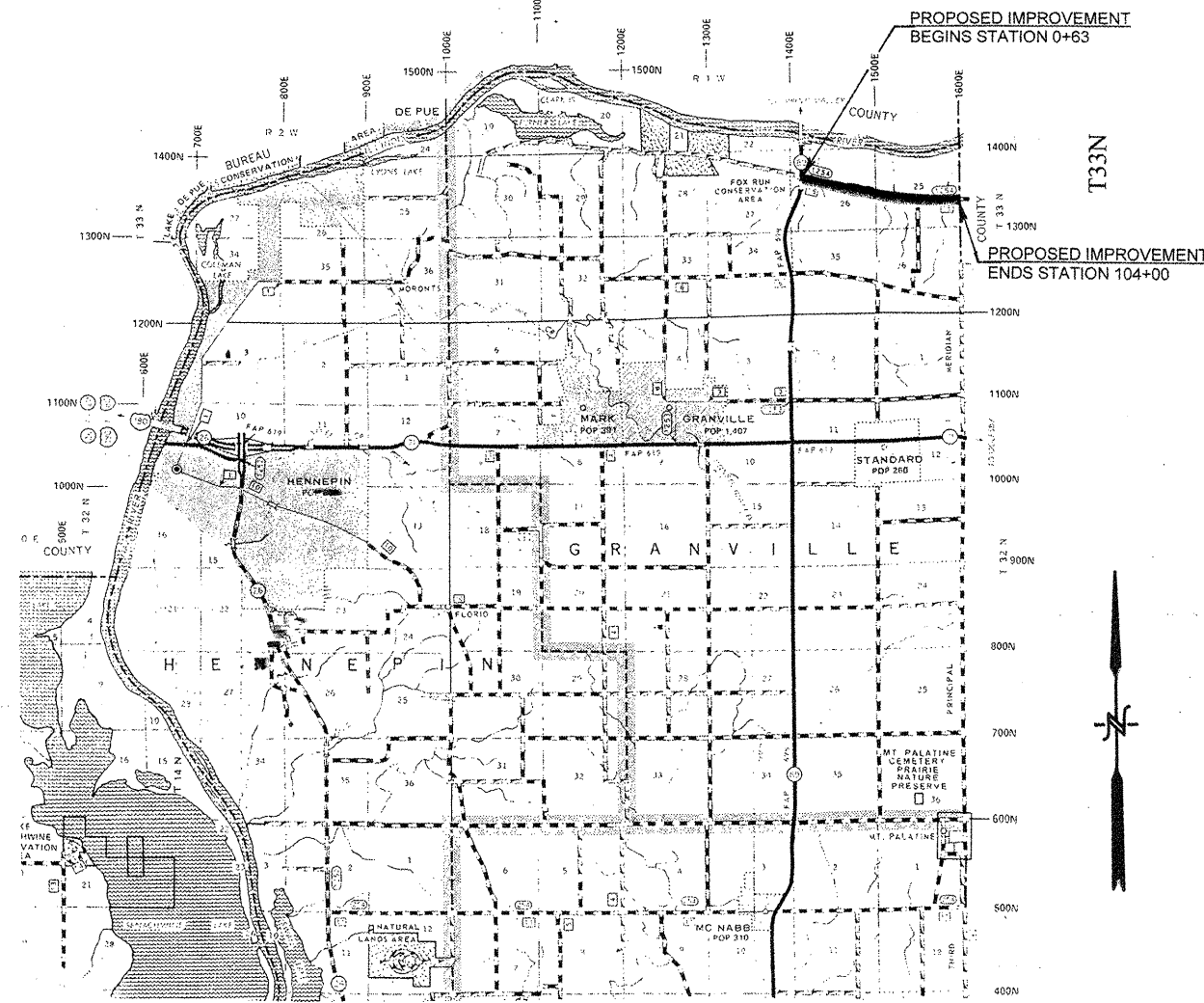
SHEET NO. 1	COVER SHEET AND SUMMARY OF QUANTITIES
SHEET NO. 2	TABULATION OF QUANTITIES
SHEET NO. 3	TYPICAL CROSS SECTIONS, SHOULDER DETAIL, BUTT JOINT DETAIL AND TAPER DETAILS
SHEET NO. 4	MAILBOX TURNOUT, ENTRANCE DETAILS, SCHEDULE OF NO PASSING ZONES

STATE OF ILLINOIS
DEPARTMENT OF TRANSPORTATION
DIVISION OF HIGHWAYS
AMERICAN RECOVERY & REINVESTMENT ACT FUNDING
FAS 1254 (CH 16)
SECTION 07-00020-00-RS
PUTNAM COUNTY
PROJECT ARA-1254(110)
JOB C-94-112-06

- STANDARDS:
- 701311-03 LANE CLOSURE TWO LANE, TWO WAY MOVING OPERATIONS - DAY ONLY
 - 701901-01 TRAFFIC CONTROL DEVICES
 - 780001-02 TYPICAL PAVEMENT MARKINGS
 - 701306-02 LANE CLOSURE TWO LANE, TWO WAY SLOW MOVING OPERATIONS - DAY ONLY FOR SPEEDS EQUAL OR LESS THAN 45 MPH



LOCATION OF SECTION INDICATED THIS:



NET LENGTH OF SECTION 10,337.00 FEET = 1.9577 MILES

SUMMARY OF QUANTITIES
CONSTRUCTION CODE 1000

CODE NO.	UNIT	ITEM	QUANTITY
40600100	GALLON	BITUMINOUS MATERIALS (PRIME COAT)	3358.0
40600300	TON	AGGREGATE (PRIME COAT)	50.0
40600982	SY	HOT MIX ASPHALT SURFACE REMOVAL BUTT JOINT	152.0
40603310	TON	HOT-MIX ASPHALT SURFACE COURSE MIX "C" N50	2823.0
48101200	TON	AGGREGATE SHOULDERS, TYPE B	150.0
67100100	L SUM	MOBILIZATION	1.0
70100460	L SUM	TRAFFIC CONTROL AND PROTECTION STND 701306	1.0
70300100	FT	SHORT TERM PAVEMENT MARKING	2068.0
70300220	FT	TEMPORARY PAVEMENT MARKING LINE 4"	27372.0
70301000	SF	WORK ZONE PAVEMENT MARKING REMOVAL	345.0
* 78001110	FT	PAINT PAVEMENT MARKING-LINE 4"	27372.0

* SPECIALTY ITEMS

CLASS II ROAD 10 YEAR DESIGN

CURRENT ADT	3100
(10 year) DESIGN ADT	3424
STRUCTURAL DESIGN TRAFFIC	3258
P.C. 94% ADT	3066
S.U. 5% ADT	160
M.U. 1% ADT	32

T.F. =	0.1535
I.B.R. =	3.3
Dt =	3.03
Provided	3.60

PROPOSED BITUMINOUS RESURFACING: 1 1/2" SURFACE CSE.

FUNCTIONAL CLASSIFICATION =
MAJOR COLLECTOR

PLANS PREPARED BY
GEORGE P. MEISTER
COUNTY ENGINEER
REGISTERED PROFESSIONAL ENGINEER
George P. Meister 8/25/09
Registration No. 62-35763
Expires 11-30-09



J.U.L.I.E. 1-800-892-0123

APPROVED	<i>August 25</i>	20 09
	<i>George P. Meister</i>	
	PUTNAM COUNTY ENGINEER	
PASSED	<i>12-14</i>	20 09
	<i>JDC</i>	
	DISTRICT ENGINEER OF LOCAL ROADS & STREETS	
Released For Bid Based on Limited Review	<i>Dec 14</i>	20 09
	<i>[Signature]</i>	
	CITY DIRECTOR FOR HIGHWAYS REGION THREE ENGINEER	
	STATE OF ILLINOIS DEPARTMENT OF TRANSPORTATION	

TABULATION OF QUANTITIES

FAS ROUTE NO.	COUNTY	SECTION	CONTRACT	SHEET NO.	TOTAL SHEETS
1254	PUTNAM	07-00020-00-RS	89413	2	4

40600300 AGGREGATE (PRIME COAT)

LOCATION	WIDTH	QUANTITY REQUIRED
STA. 0+63-104+00	29.0'	<u>50 TON</u> 50 TON
RATE OF APPL. = 3 LB/S.Y.		TOTAL 50 TON (USE 50 TON)

70300100 SHORT-TERM PAVEMENT MARKING

LOCATION	WIDTH	QUANTITY REQUIRED
STA. 0+63-104+00 2 APPLICATIONS	4"	<u>2068.0 FOOT</u> 2068.0 FOOT
		TOTAL 2068.0 FOOT (USE 2068 FOOT)

40600100 BITUMINOUS MATERIALS (PRIME COAT)

LOCATION	WIDTH	QUANTITY REQUIRED
STA. 0+63-104+00 (MAIN LANES)	29	3330.8
ENTIRE SECTION (ENTRANCES)	VAR.	<u>26.7 GAL</u>
RATE OF APPL. = 0.1 GAL/S.Y.		TOTAL 3357.5 GAL (USE 3358 GAL)

70300220 TEMPORARY PAVEMENT MARKING LINE 4"

LOCATION	WIDTH	QUANTITY REQUIRED
	4"	<u>27372.0 FOOT</u> 27372.0 FOOT
		TOTAL 27372.0 FOOT (USE 27372 FOOT)

40600982 HOT-MIX ASPHALT SURFACE REMOVAL BUTT JOINT

LOCATION	WIDTH	QUANTITY REQUIRED
STA. 0+63	VAR.	98.0 SQ YD
STA. 104+00	VAR.	<u>54.0 SQ YD</u> 152.0 SQ YD
		TOTAL 152.0 SQ YD (USE 152 SQ YD)

70301000 WORK ZONE PAVEMENT MARKING REMOVAL

LOCATION	WIDTH	QUANTITY REQUIRED
STA. 0+63-104+00	4"	<u>345.0 SQ FT</u> 345.0 SQ FT
		TOTAL 345.0 SQ FT (USE 345 SQ. FT)

40603310 HOT-MIX ASPHALT SURFACE COURSE MIX "C" N50

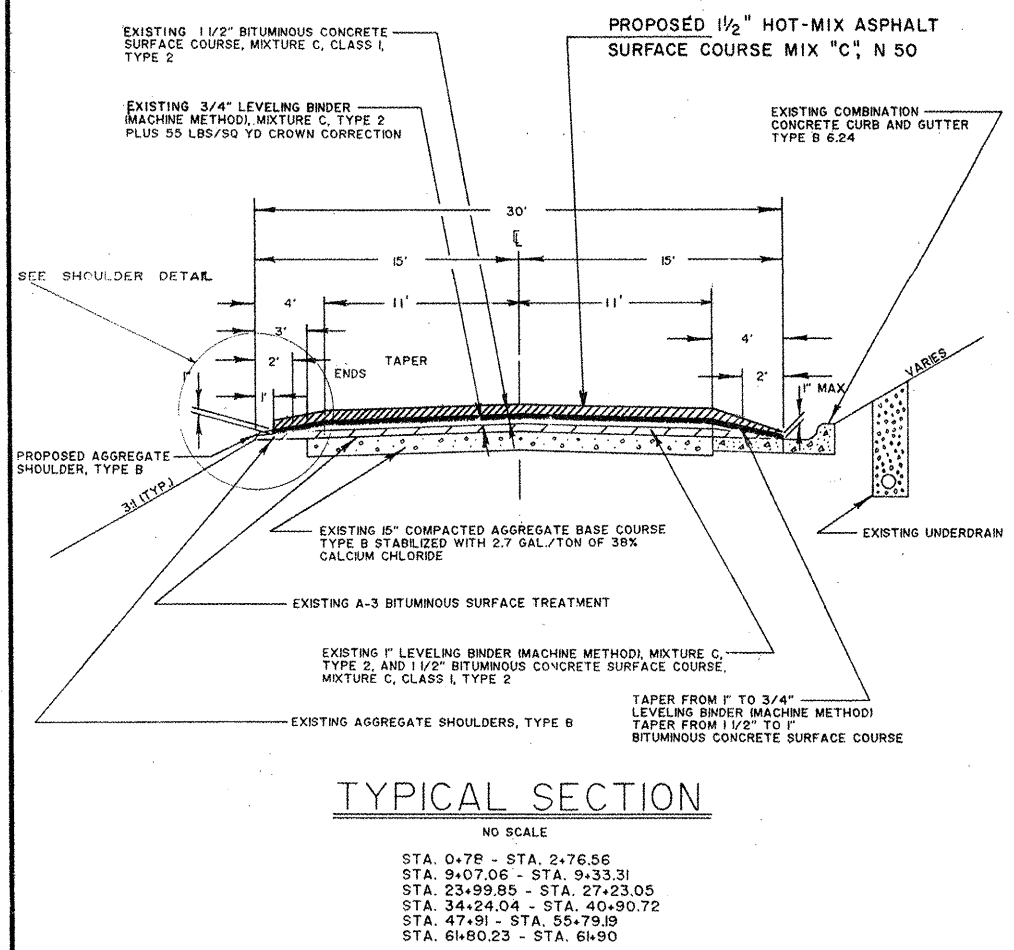
LOCATION	WIDTH	QUANTITY REQUIRED
STA. 0+63-104+00 (MAIN LANES)	29.0'	2797.8 TON
ENTIRE SECTION (ENTRANCES)	VAR.	22.3 TON
ENTIRE SECTION (MAILBOX TURNOUTS)	VAR.	2.4 TON
		<u>2822.5 TON</u>
RATE OF APPL. = 112 LB./S.Y./IN.		TOTAL 2822.3 (USE 2823 TON)

78001110 PAINT PAVEMENT MARKING - 4"

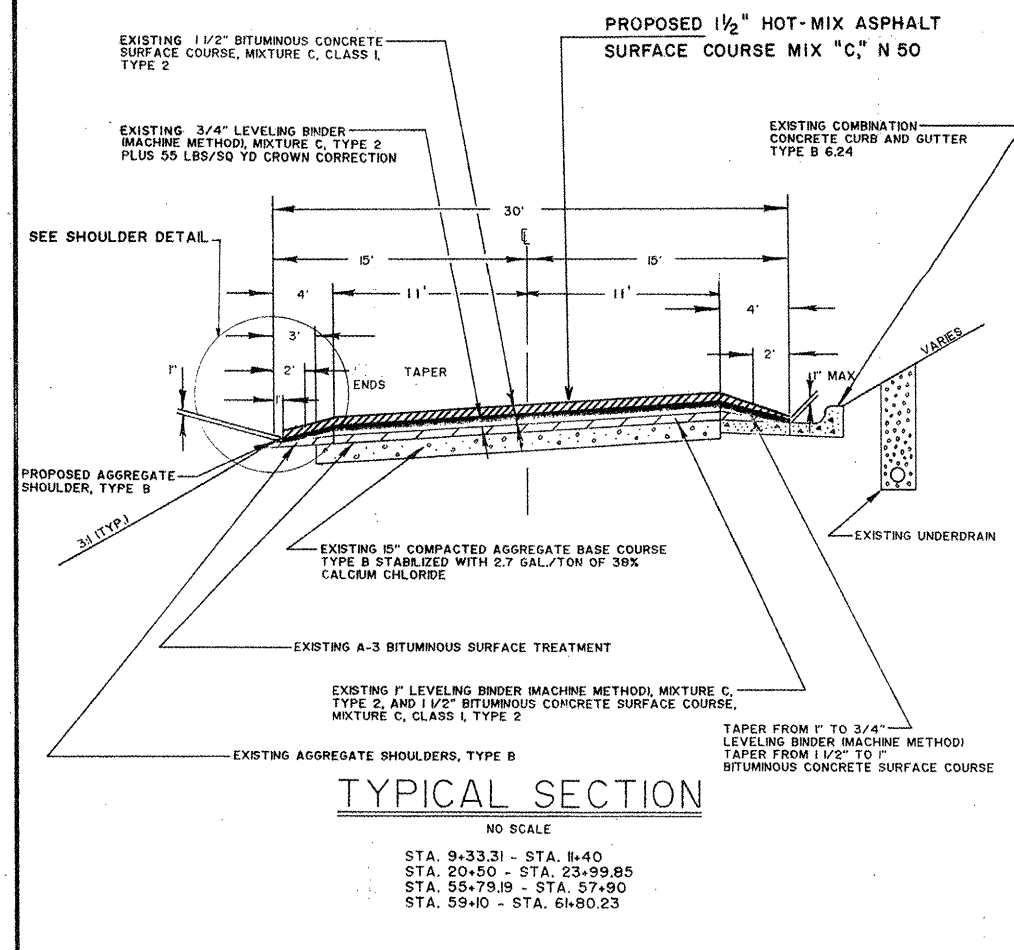
LOCATION	WIDTH	QUANTITY REQUIRED
STA. 6+15-99+00 (CENTERLINE)	4"	2322 FOOT
STA. 0+63-104+00 (EDGE LINES)	4"	20674 FOOT
ENTIRE SECTION (NO PASSING)	4"	<u>4376 FOOT</u> 27372 FOOT
		TOTAL 27372 FOOT

48101200 AGGREGATE SHOULDERS, TYPE B

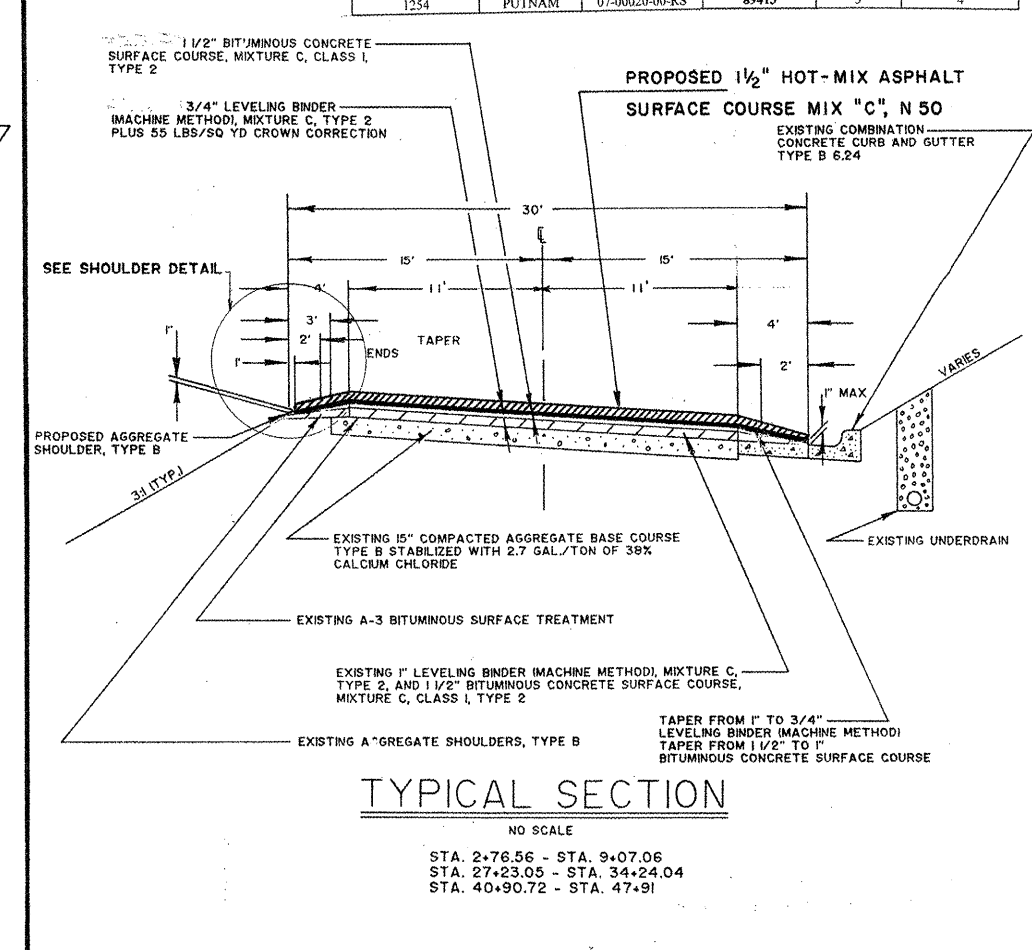
LOCATION	WIDTH	QUANTITY REQUIRED
LT. STA. 0+63-104+00	1.0'	99.5 TON
RT. STA. 11+40-20+50	1.0'	8.76 TON
RT. STA. 57+90-59+10	1.0'	1.15 TON
RT. STA. 61+90-104+00	1.0'	<u>40.54 TON</u> 149.95 TON
RATE OF APPL. = 2.08T/C.Y.		TOTAL 149.95 TON (USE 150 TON)



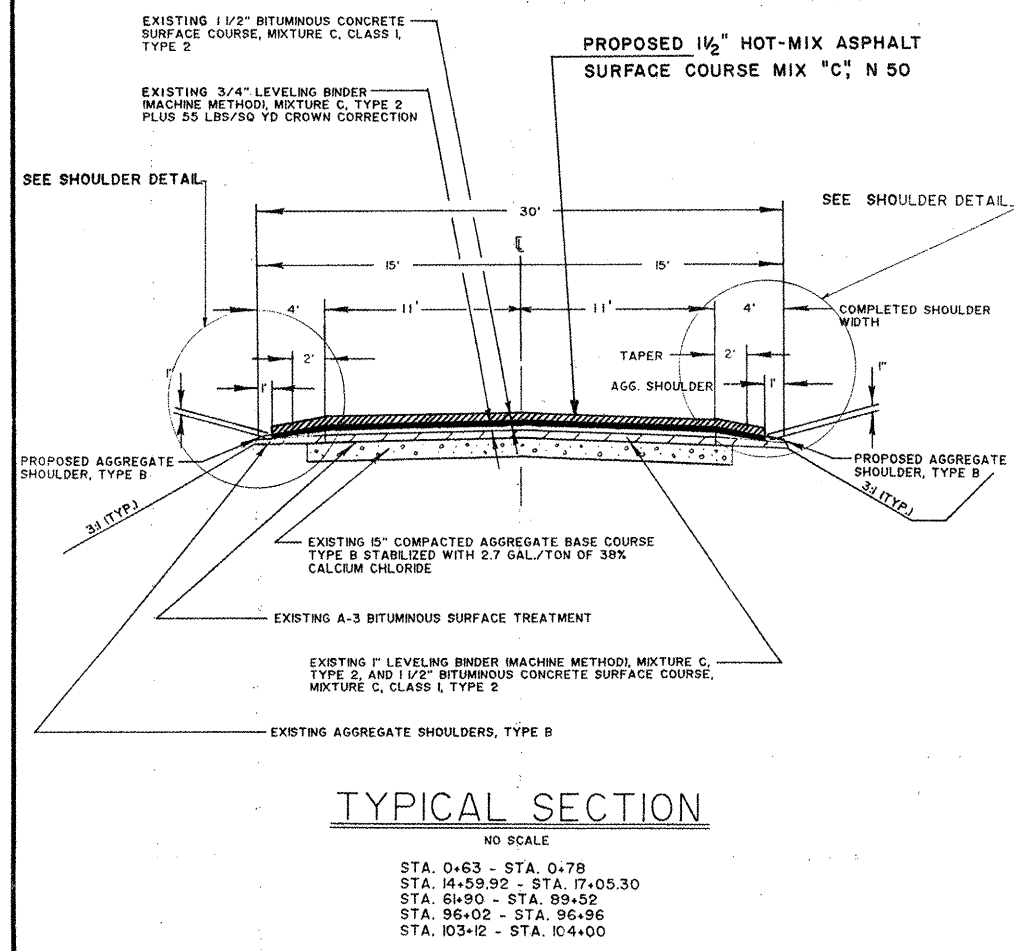
TYPICAL SECTION



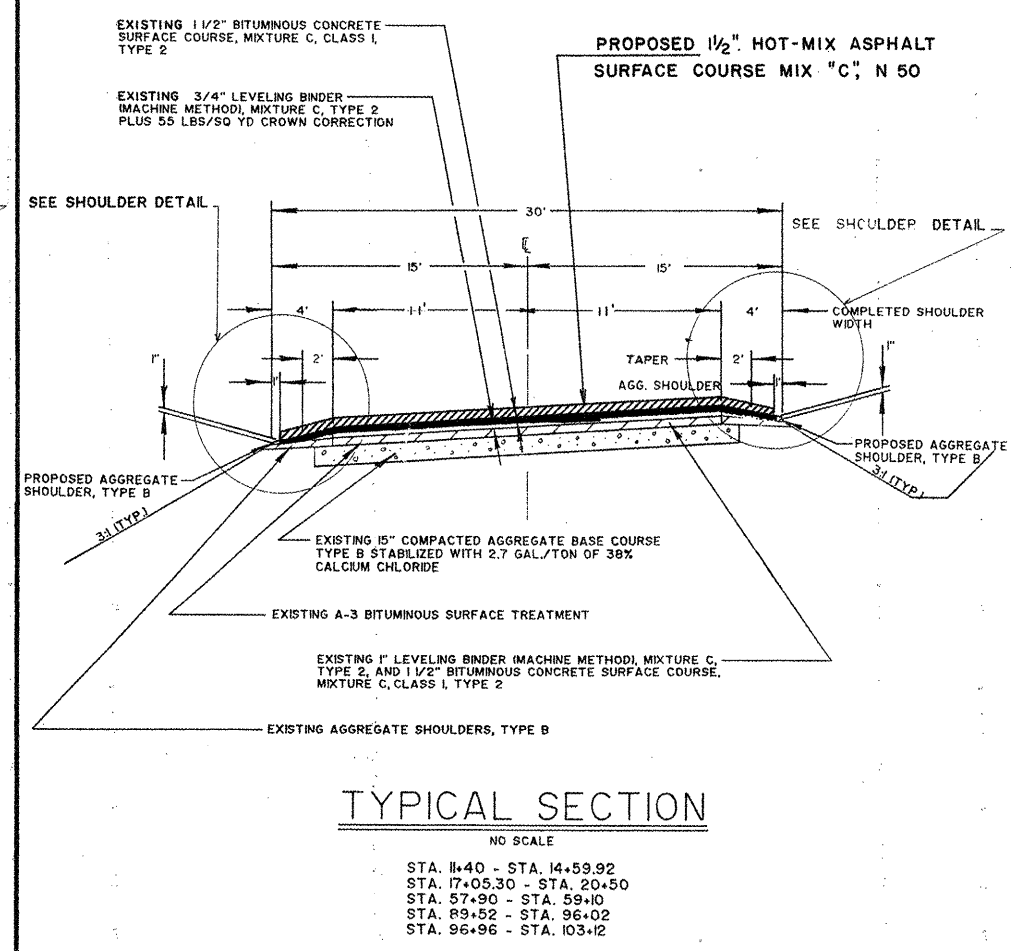
TYPICAL SECTION



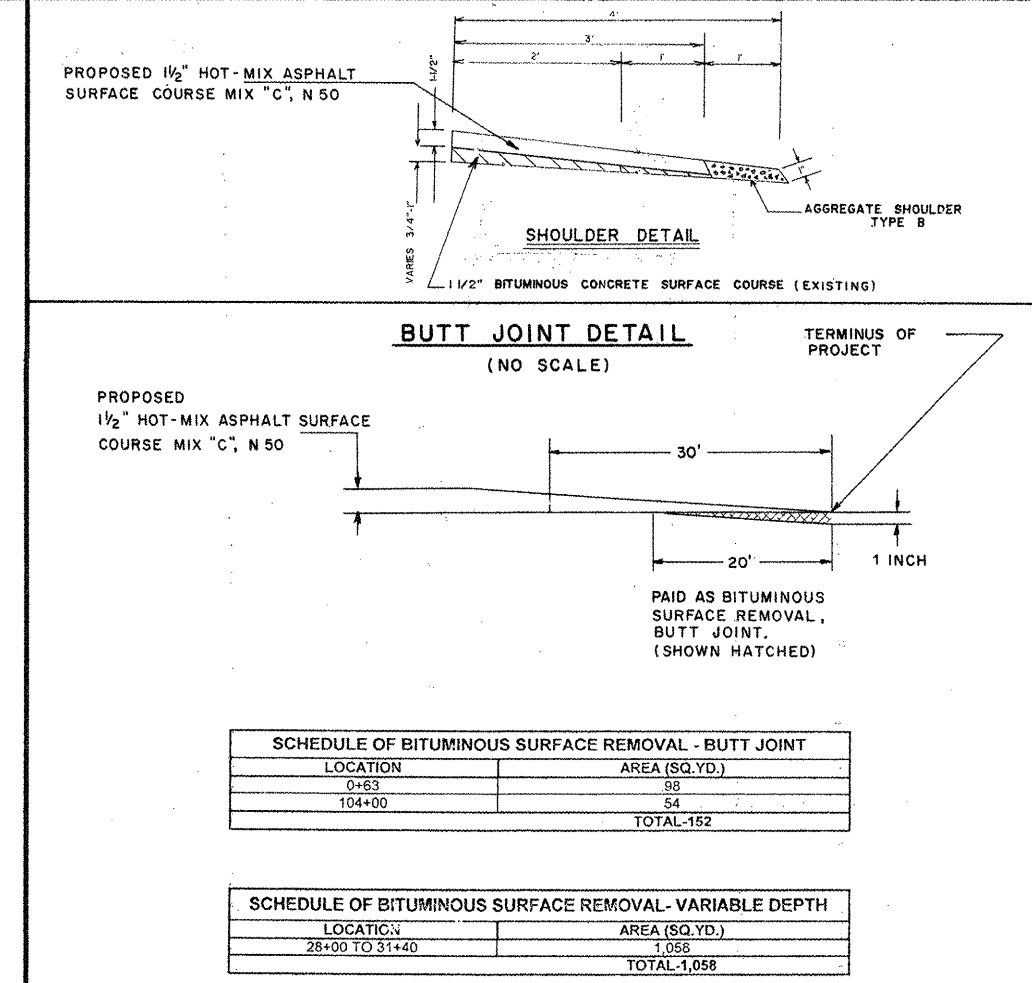
TYPICAL SECTION



TYPICAL SECTION

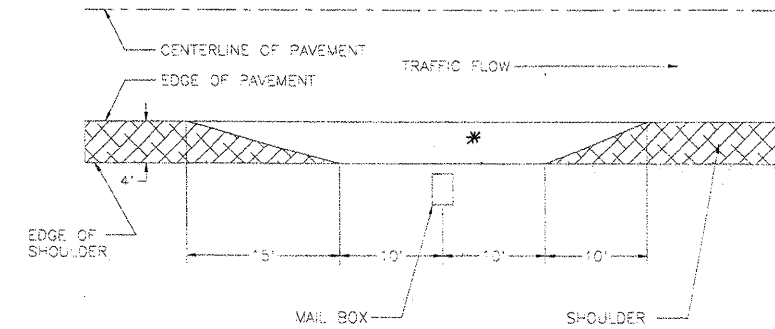


TYPICAL SECTION



FAS ROUTE NO.	COUNTY	SECTION	CONTRACT	SHEET NO.	TOTAL SHEETS
1254	PUTNAM	07-00020-00-RS	89413	4	4

MAIL BOX TURN-OUT



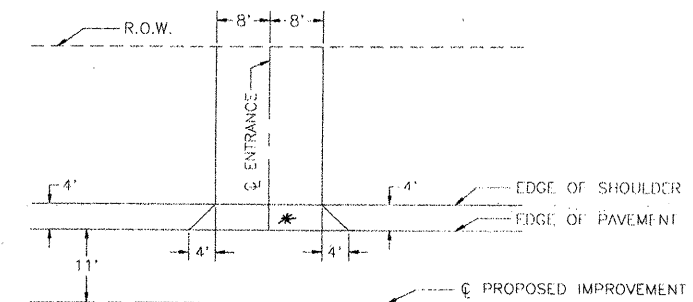
* CONSISTS OF 1 1/2" HOT-MIX ASPHALT
SURFACE COURSE MIX "C" N 50

MAILBOX TURNOUTS

	STATION	SQ YDS	TONS MIXT. REQUIRED
RT	4+21	14.4	1.21
LT	37+94	14.4	1.21
		28.8	2.42
		SQ YD	TON

ENTRANCE DETAIL

NO SCALE



* CONSISTS OF 1 1/2" HOT-MIX ASPHALT
SURFACE COURSE MIX "C" N 50

SCHEDULE OF ENTRANCES

	STATION	WIDTH	SQ YDS	TONS MIXT. REQUIRED		STATION	WIDTH	SQ YDS	TONS MIXT. REQUIRED
RT	4+21	22'	11.6	0.97	RT	59+72	22'	11.6	0.97
RT	7+27	22'	11.6	0.97	RT	61+40	22'	11.6	0.97
LT	11+52	22'	11.6	0.97	RT	65+02	22'	11.6	0.97
LT	13+37	22'	11.6	0.97	LT	72+29	22'	11.6	0.97
LT	14+17	22'	11.6	0.97	RT	83+55	22'	11.6	0.97
RT	15+18	22'	11.6	0.97	RT	86+00	22'	11.6	0.97
RT	18+25	22'	11.6	0.97	LT	92+45	22'	11.6	0.97
LT	18+25	22'	11.6	0.97	RT	92+45	22'	11.6	0.97
RT	37+94	22'	11.6	0.97	LT	93+10	22'	11.6	0.97
RT	39+82	22'	11.6	0.97	RT	93+10	22'	11.6	0.97
LT	58+57	22'	11.6	0.97	RT	100+75	22'	11.6	0.97
LT	59+37	22'	11.6	0.97					
					TOTAL			266.80	22.31
								SQ YD	TON

SCHEDULE OF NO PASSING ZONES

	STATION	FOOT
RT	0+63 - 6+15	552'
LT	0+63 - 13+00	1237'
RT	23+00 - 26+12	312'
LT	30+75 - 34+25	350'
RT	49+25 - 51+75	250'
LT	56+50 - 59+25	275'
RT	95+00 - 104+00	900'
LT	99+00 - 104+00	500'
	TOTAL	4376'