

F.A. RTE.	SECTION	COUNTY	TOTAL SHEETS	SHEET NO.
358	86-00075-01-AS	WOODFORD	66	18
STA. _____ TO STA. _____		FED. ROAD DIST. NO. _____ ILLINOIS FED. AID PROJECT		

EDITH M HARTZLER

County Highway #1
 POT STA 36+49.32
 N 1506509.2307
 E 2543798.9235

RONALD R. BAUMAN

RONALD R. BAUMAN

DATE	
BY	
REVISION	
NO.	
DESCRIPTION	
DATE	
BY	
REVISION	
NO.	
DESCRIPTION	
DATE	
BY	
REVISION	
NO.	
DESCRIPTION	

STA. 36+25.00, 34.0' LT
 PROPOSED MANHOLE,
 TYPE A, 5' DIA.
 RIM ELEV. = 774.33
 INV ELEV. = 770.53

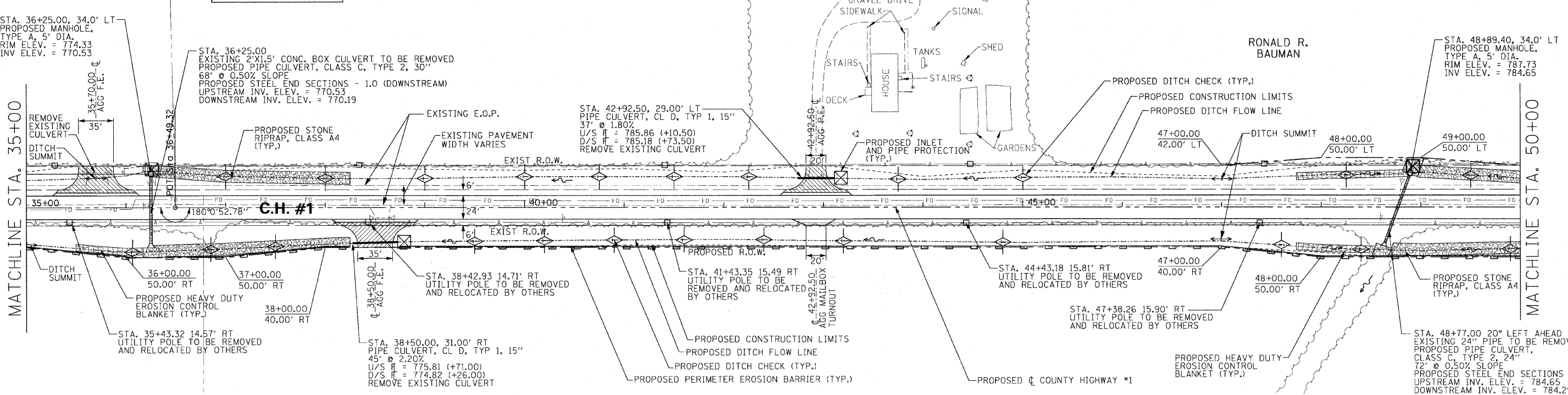
STA. 36+25.00
 EXISTING 2'x15' CONC. BOX CULVERT TO BE REMOVED
 PROPOSED PIPE CULVERT, CLASS C, TYPE 2, 30"
 68' @ 0.50% SLOPE
 PROPOSED STEEL END SECTIONS - 1.0 (DOWNSTREAM)
 UPSTREAM INV. ELEV. = 770.53
 DOWNSTREAM INV. ELEV. = 770.19

STA. 42+92.50, 29.00' LT
 PIPE CULVERT, CL D, TYP 1, 15"
 37' @ 1.80%
 U/S H = 785.86 (+10.50)
 D/S H = 785.18 (+73.50)
 REMOVE EXISTING CULVERT

STA. 48+89.40, 34.0' LT
 PROPOSED MANHOLE,
 TYPE A, 5' DIA.
 RIM ELEV. = 787.73
 INV ELEV. = 784.65

MATCHLINE STA. 35+00

MATCHLINE STA. 50+00



RUTH ANN SCHERTZ

IOLA MITMAN



H. SCALE: 1" = 50'
 V. SCALE: 1" = 5'

DATE	
BY	
REVISION	
NO.	
DESCRIPTION	
DATE	
BY	
REVISION	
NO.	
DESCRIPTION	

