

F.A. RTE.	SECTION	COUNTY	TOTAL SHEETS	SHEET NO.
358	86-00075-01-AS	WOODFORD	66	19
STA. _____ TO STA. _____		FED. ROAD DIST. NO. _____ ILLINOIS FED. AID PROJECT		

RONALD R. BAUMAN

County Highway #1  
 POT STA 63+13.43  
 N 1509179.7904  
 E 2543744.9099

COLLEN K. BYRD

ARTHUR KENNEL

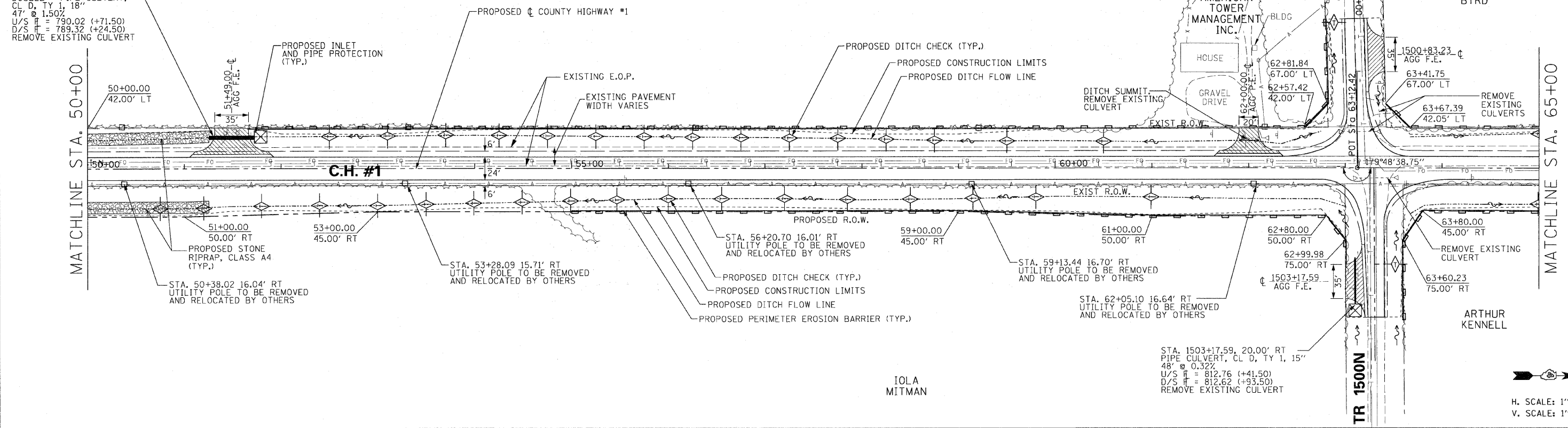
IOLA MITMAN

STA. 51+49.00, 32.00' LT  
 DOUBLE PIPE CULVERT,  
 CL D, TY 1, 18"  
 47' @ 1.50%  
 U/S  $\bar{x}$  = 790.02 (+71.50)  
 D/S  $\bar{x}$  = 789.32 (+24.50)  
 REMOVE EXISTING CULVERT

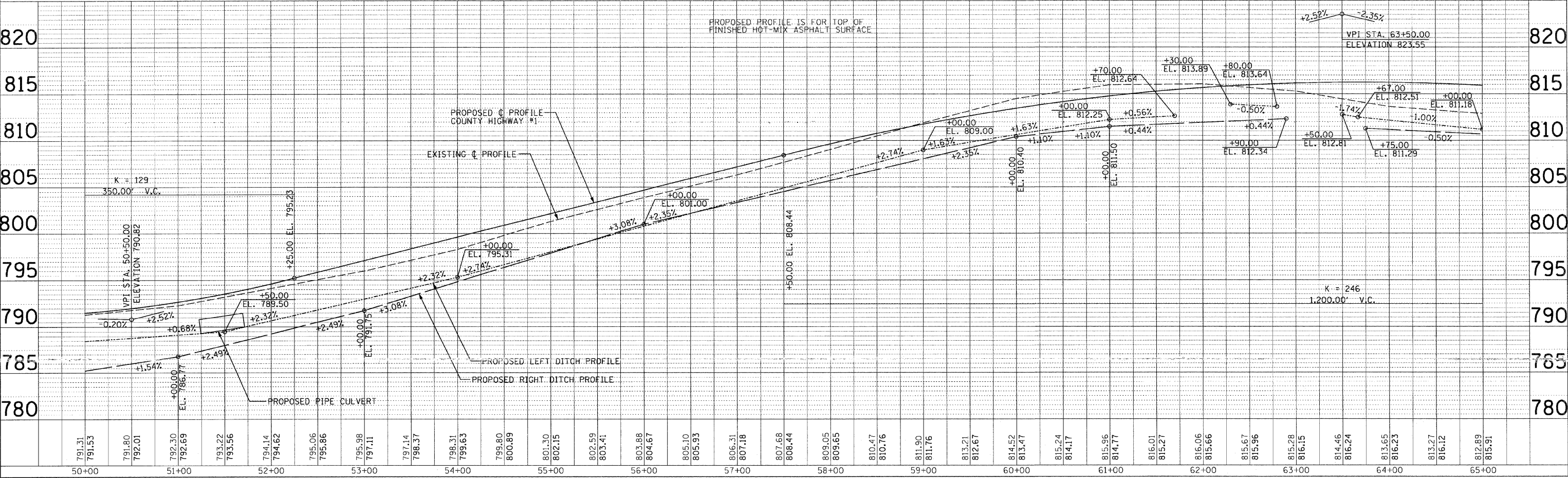
MATCHLINE STA. 50+00

MATCHLINE STA. 65+00

DATE	BY	REVISION



DATE	BY	REVISION



PLOT DATE: 8/20/15  
 FILE NAME: 89476-19.PLT  
 USER: I.MITMAN