

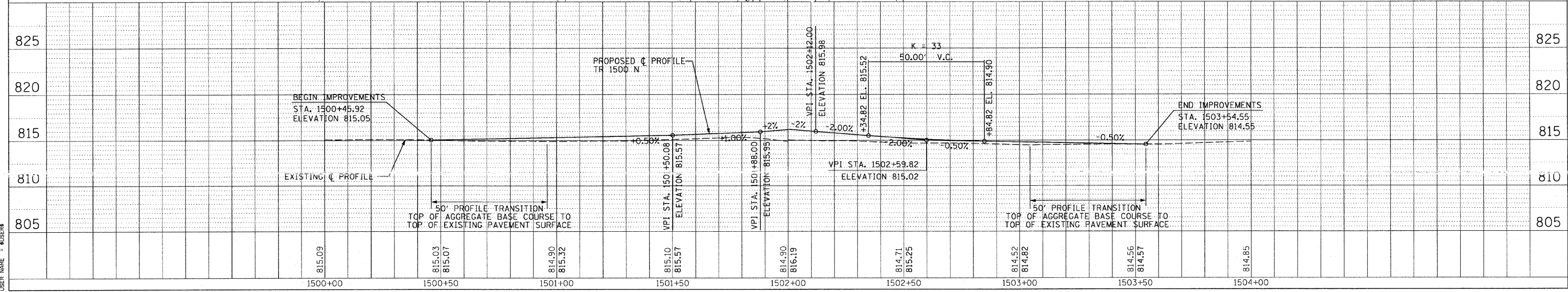
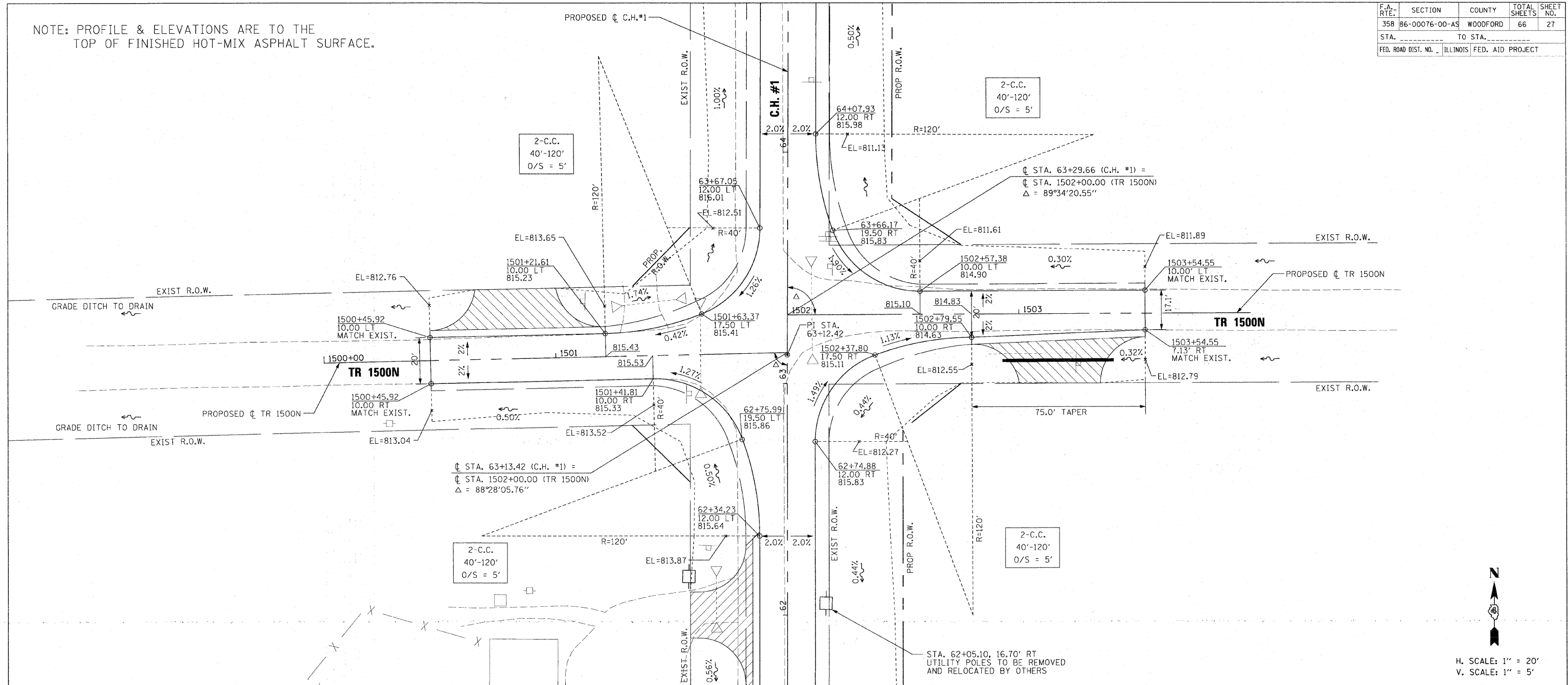
F.A. RTE.	SECTION	COUNTY	TOTAL SHEETS	SHEET NO.
358	86-00076-00-AS	WOODFORD	66	27
STA. _____		TO STA. _____		
FED. ROAD DIST. NO. _____		ILLINOIS		FED. AID PROJECT

NOTE: PROFILE & ELEVATIONS ARE TO THE TOP OF FINISHED HOT-MIX ASPHALT SURFACE.

DATE	BY

DATE	BY

PLOT DATE = 8/24/05
 FILE NAME = 811505
 USER NAME = MUSER



TR 1500N INTERSECTION DETAIL