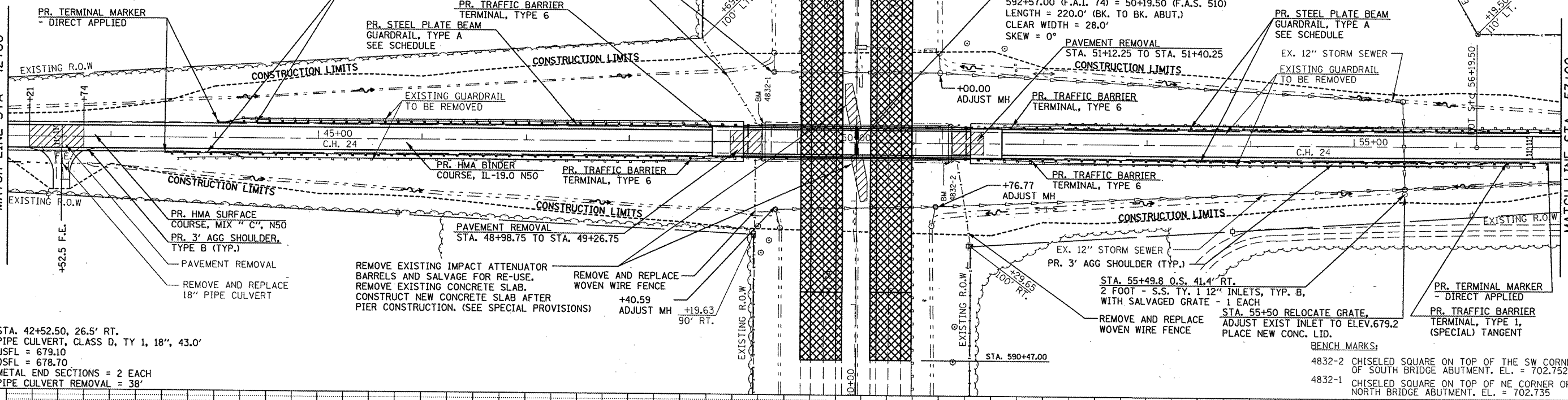




50 0 50 100 FEET

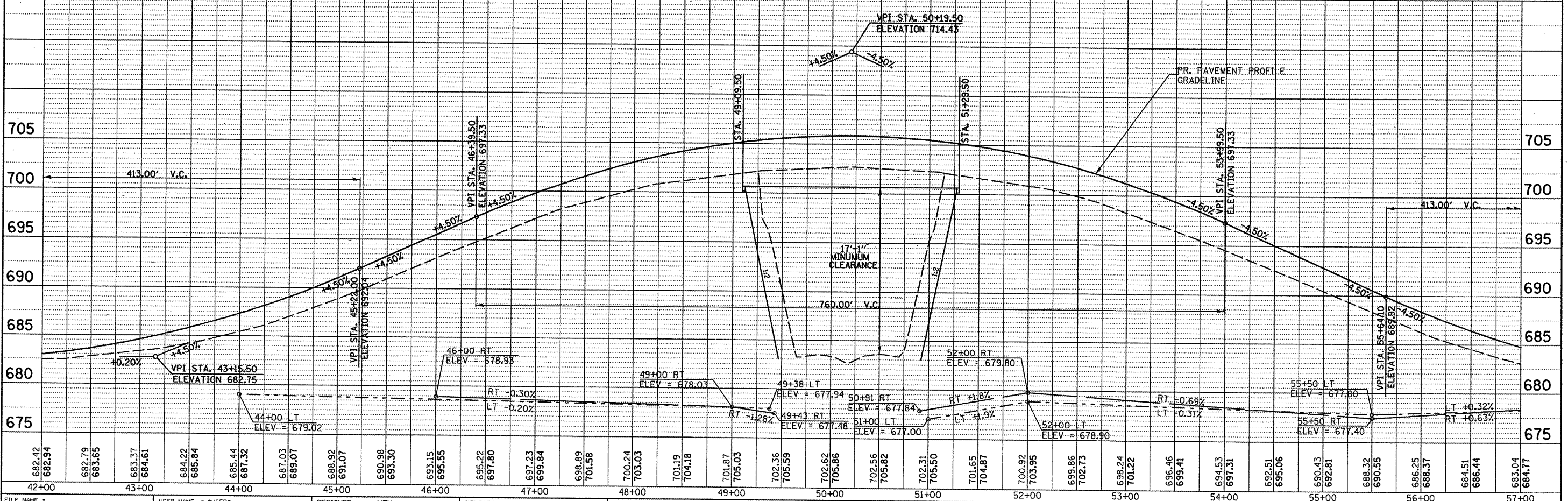
MATCH LINE STA 42+00

MATCH LINE STA 57+00



STA. 42+52.50, 26.5' RT.  
PIPE CULVERT, CLASS D, TY 1, 18", 43.0'  
USFL = 679.10  
DSFL = 678.70  
METAL END SECTIONS = 2 EACH  
PIPE CULVERT REMOVAL = 38'

BENCH MARKS:  
4832-2 CHISELED SQUARE ON TOP OF THE SW CORNER OF SOUTH BRIDGE ABUTMENT, EL. = 702.752  
4832-1 CHISELED SQUARE ON TOP OF NE CORNER OF NORTH BRIDGE ABUTMENT, EL. = 702.735



FILE NAME =	USER NAME = #USER#	DESIGNED - MTM	REVISED -
#FILE#		DRAWN - JJS	REVISED -
		CHECKED - LLO	REVISED -
		DATE - JULY 2009	REVISED -

STATE OF ILLINOIS DEPARTMENT OF TRANSPORTATION			C.H. 24 - PLAN AND PROFILE	
F.A.I. RTE. 74	SECTION (10-6HB-5)BR	COUNTY CHAMPAIGN	TOTAL SHEETS 63	SHEET NO. 10
SCALE: 1:50			SHEET NO. 2 OF 3 SHEETS	
STA. 42+00 TO STA. 57+00			CONTRACT NO. 90875	
FED. ROAD DIST. NO. ILLINOIS FED. AID PROJECT				