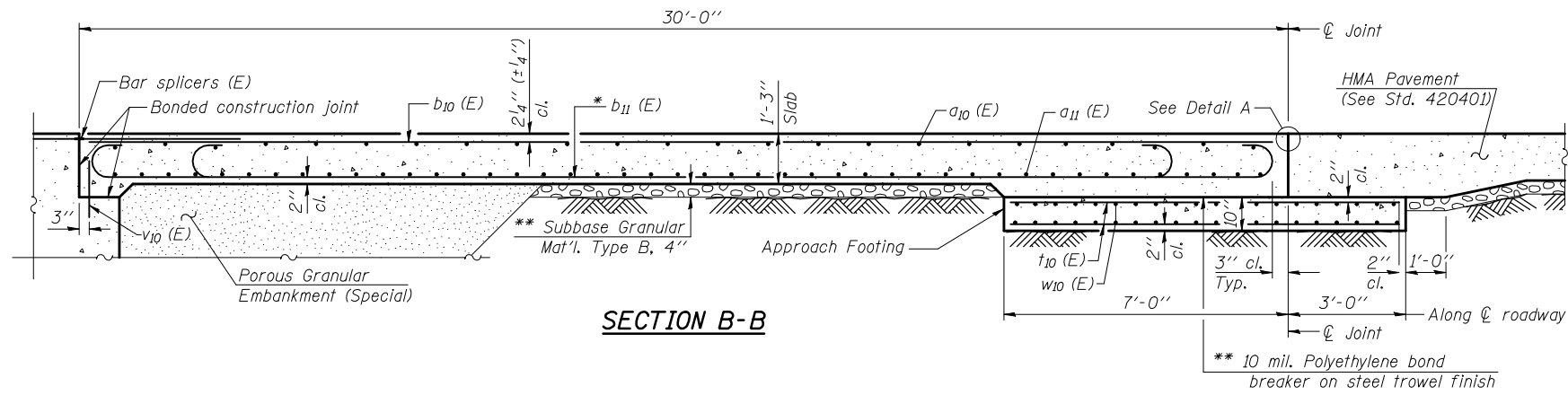
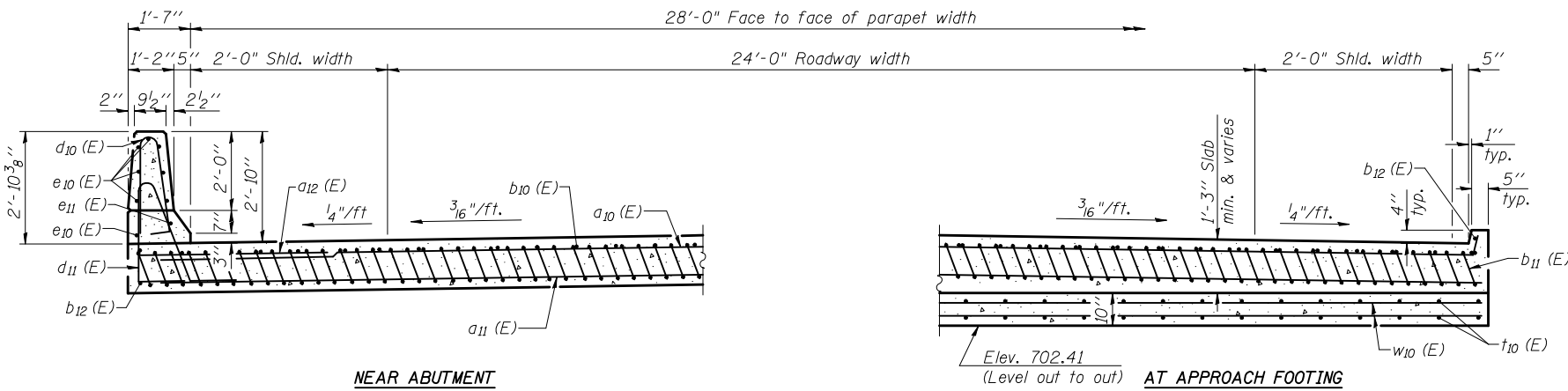


Notes:

Approach slab and parapet concrete shall be paid for as Concrete Superstructure.
 Approach footing concrete shall be paid for as Concrete Structures.
 Reinforcement shall be paid for as Reinforcement Bars, Epoxy Coated.
 For v_{10} (E) bar details, see sheet 8 of 20.
 The approach footing maximum applied service bearing pressure (Q_{max}) = 2.0 ksf.
 For bar splicer details, see sheet 18 of 20.
 Cost of excavation for approach footing included with Concrete Structures.
 For Porous Granular Embankment, Special and drainage treatment details, see sheet 2 of 20.



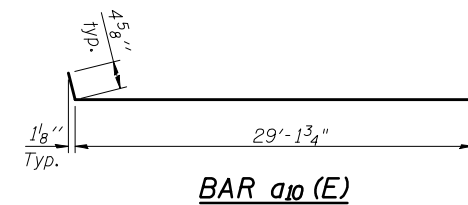
SECTION B-B



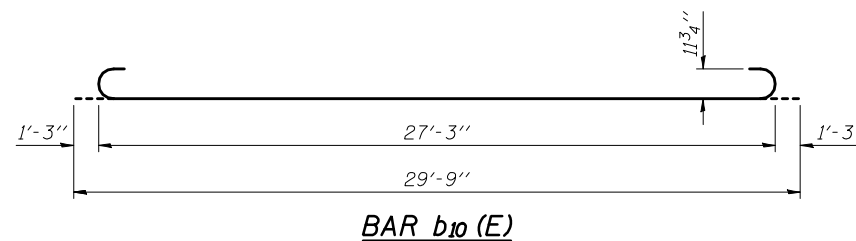
NEAR ABUTMENT

SECTION C-C

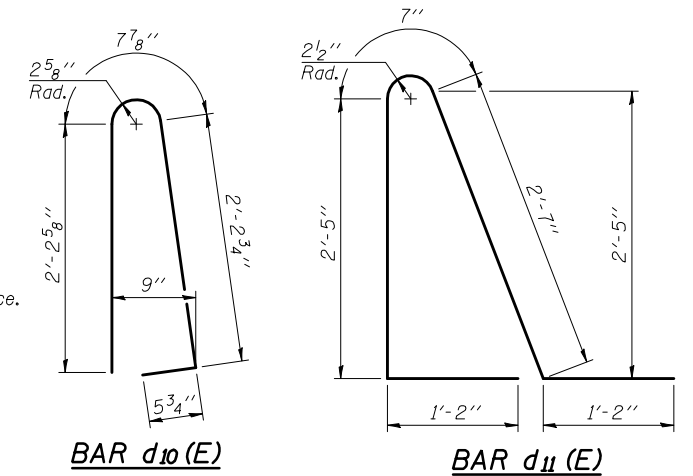
(See Plan for dimensions not shown)



BAR a10 (E)



BAR b10 (E)



BAR d10 (E)

BAR d11 (E)

**APPROACH SLABS
BILL OF MATERIAL**

Bar	No.	Size	Length	Shape
a10 (E)	50	#4	29'-11"	—
a11 (E)	92	#5	29'-6"	—
a12 (E)	48	#6	6'-0"	—
b10 (E)	48	#4	29'-8"	—
b11 (E)	144	#9	29'-9"	—
b12 (E)	8	#4	14'-8"	—
d10 (E)	68	#5	5'-7"	▲
d11 (E)	68	#5	7'-11"	▲
e10 (E)	32	#4	14'-8"	—
e11 (E)	4	#8	14'-8"	—
t10 (E)	124	#4	9'-8"	—
w10 (E)	80	#5	29'-6"	—
Concrete Superstructure		Cu. Yd.	91.4	
Concrete Structures		Cu. Yd.	18.4	
Reinforcement Bars, Epoxy Coated		Pound	24,555	

**BRIDGE APPROACH SLAB DETAILS
STRUCTURE NO. 010-0285**

DESIGNED	CJC
CHECKED	MEB
DRAWN	UJ
CHECKED	MEB

HR
HURST-ROSCHÉ
ENGINEERS, INC.
 PROFESSIONAL DESIGN NUMBER: 184-00296

SHEET NO. 11 20 SHEETS	F.A.I. RTE. 74	SECTION (10-6HB-5)BR	COUNTY CHAMPAIGN	TOTAL SHEETS 63	SHEET NO. 23
	SN 010-0285		CONTRACT NO. 90875		
FED. ROAD DIST. NO. 5 ILLINOIS FED. AID PROJECT					