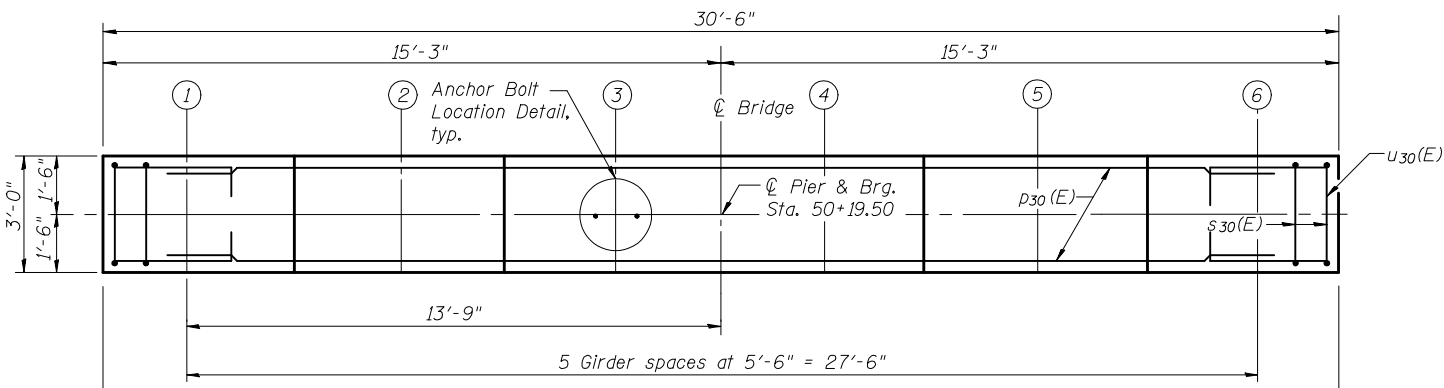


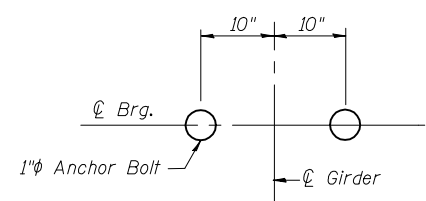
Notes:
 Space reinforcement in cap to miss anchor bolts.
 Pour steps monolithically with cap.
 For details of piles, see sheet 17 of 20.

PILE DATA

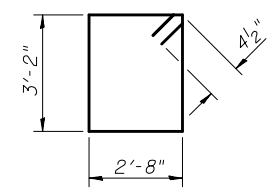
Type: HP 14x102
 Nominal Required Bearing: 810 kips
 Factored Resistance Available: 405 kips
 Est. Length: 82'
 No. Production Piles: 7
 No. Test Piles: 1



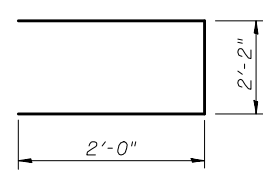
TOP PLAN



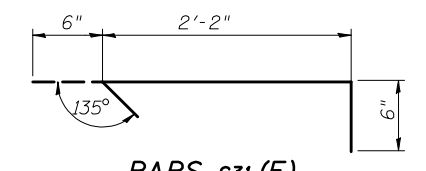
ANCHOR BOLT LOCATION DETAIL



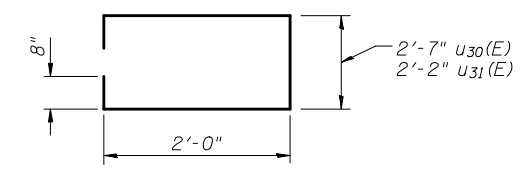
BAR s30(E)



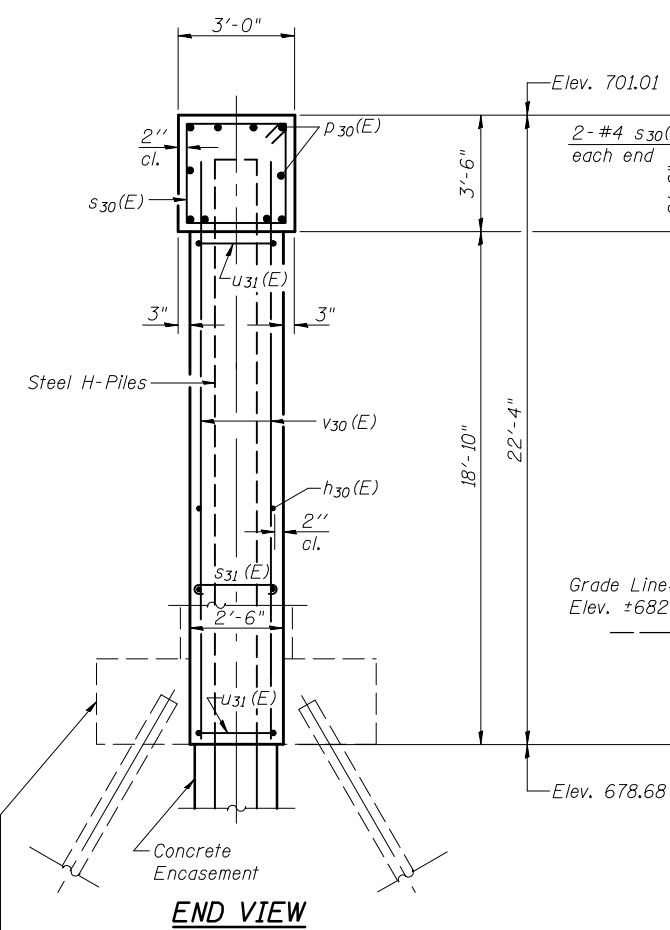
BARS u32(E)



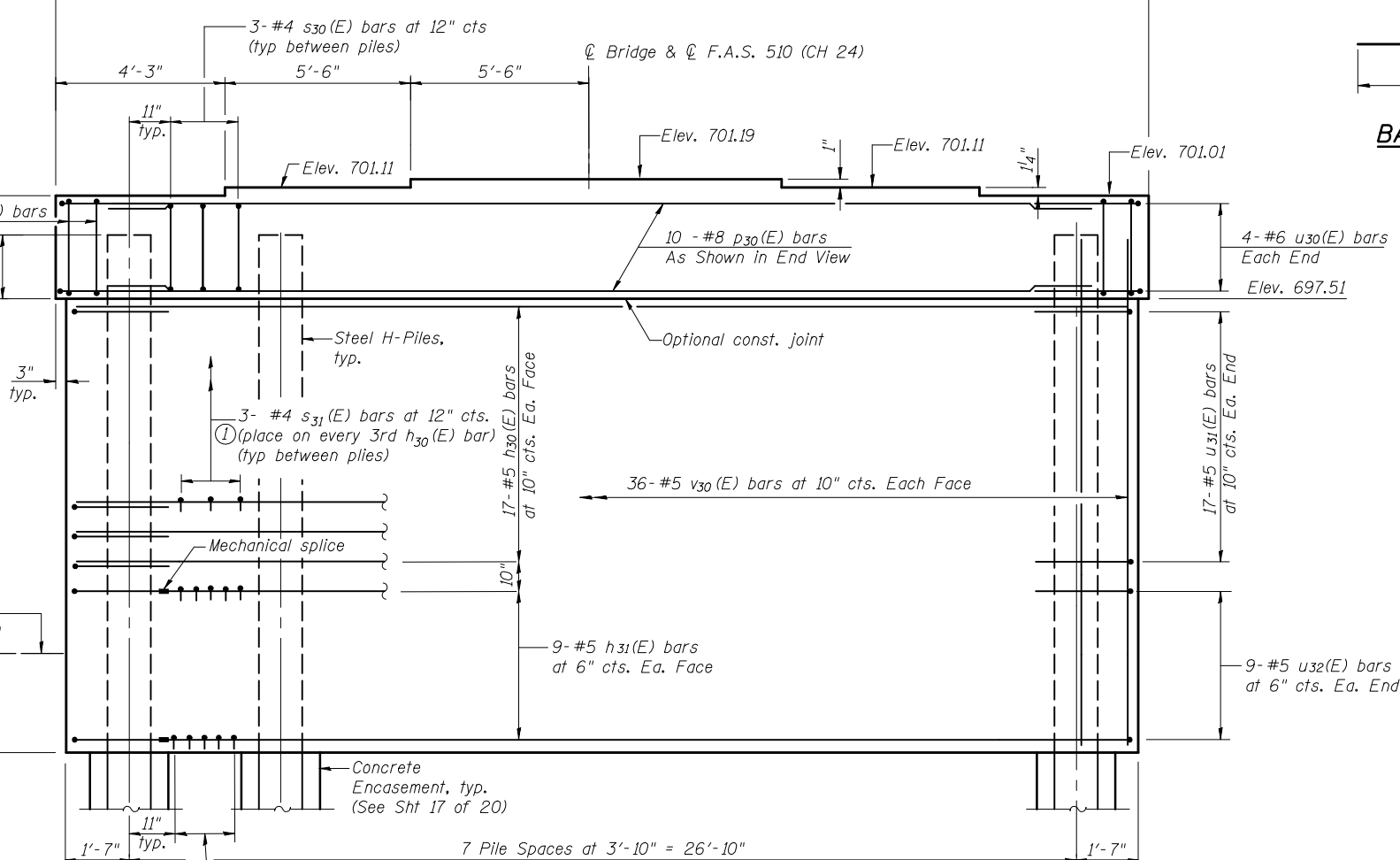
BARS s31(E)



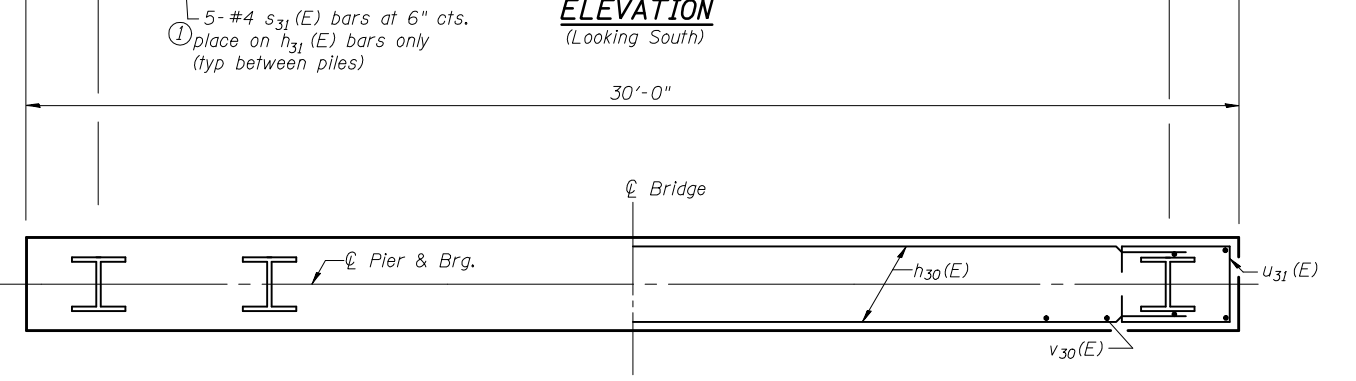
BARS u30(E) & u31(E)



END VIEW



ELEVATION (Looking South)



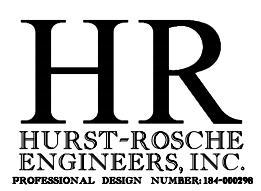
FOOTING PLAN

BILL OF MATERIAL

Bar	No.	Size	Length	Shape
h30(E)	34	#5	29'-6"	—
h31(E)	18	#5	25'-8"	—
p30(E)	10	#8	30'-2"	—
s30(E)	25	#4	12'-5"	□
s31(E)	420	#4	3'-2"	┌
u30(E)	8	#6	7'-11"	□
u31(E)	34	#5	7'-6"	□
u32(E)	18	#5	6'-2"	┌
v30(E)	72	#5	24'-2"	—
Concrete Structures		Cu. Yd.	64.4	
Reinforcement Bars, Epoxy Coated		Pound	5,725	
Furnishing Steel Piles HP14x102		Foot	574	
Driving Piles		Foot	574	
Test Pile Steel HP14x102		Each	1	
Mechanical Splice		Each	36	
Concrete Encasement		Cu. Yd.	4.4	

PIER STRUCTURE NO. 010-0285

DESIGNED	JSP
CHECKED	MEB
DRAWN	UJ
CHECKED	MEB



SHEET NO. 16 20 SHEETS	F.A.I. RTE. 74	SECTION (10-6HB-5)BR	COUNTY CHAMPAIGN	TOTAL SHEETS 63	SHEET NO. 28
	SN 010-0285		CONTRACT NO. 90875		
FED. ROAD DIST. NO. 5 ILLINOIS FED. AID PROJECT					